



T.S.A. wireless smoke detector

The T.S.A. wireless smoke detector can be integrated into the THITRONIK® security system and does not only warn of break-ins, theft and gases, but also of smoke and fire – a safety advantage, especially at night, as the sense of smell is impaired when you sleep. The alarm is not only triggered by the 85dB signal of the TSA, but also by vehicle indicators and horn. With Pro-finder, the vehicle owner and up to ten other people also receive an SMS notification. The TSA can also be used without the THITRONIK® system and is ideal for installation in rear garages when charging e-bikes.

Scope of delivery: TSA wireless smoke detector, operating instructions, mounting material, warning sticker

Technical data: Power supply 3V (1.6Ah) lithium battery, current consumption 13.2µA at 2.9V, alarm 85dB at a distance of 3 meters, temperature range -10 to +55 °C, dimensions (W x H x D) 50.8 x 42.5mm, weight 59g.

- ① TSA wireless smoke detector, white 80308 89,-
- ② TSA wireless smoke detector, gray 80309 89,-
- ③ Adapter for wall mounting, white 803080 7,-
- ④ adapter for wall mounting, gray 803090 7,-



NEW

CARBEST

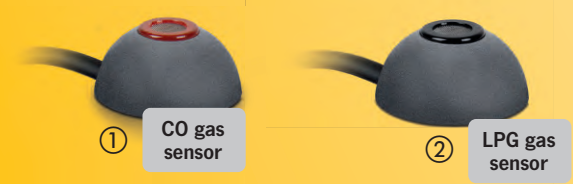
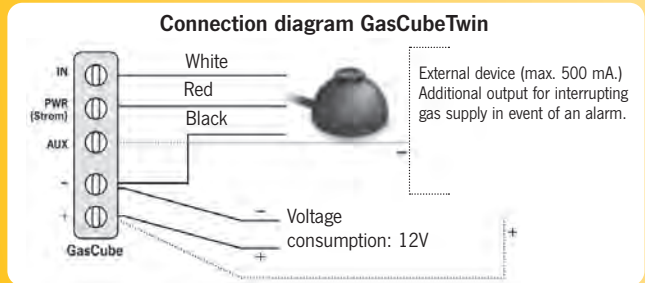
GasCubeTwin

Reliable warning of propane/butane gas (LPG) & anesthetic gases. Connection possibilities for two optional additional sensors. These detect gas concentration in the air just as effectively as the main sensor and offer additional safety in case of rising and falling gases. Cable length: 2,7 m. Three possible combinations of additional sensors:

- 1. 2 x sensor for detection of CO gas (carbon monoxide)
 - 2. 2 x sensor for detection of LPG gas/anesthetic gas
 - 3. 1 x sensor CO gas + 1 x sensor LPG gas/anesthetic gas
- Color: matte anthracite

- ① Additional CO gas sensor (carbon monoxide) 802484 29,90
- ② Additional sensor propane/butane gas (LPG) 802485 29,95

- 12V PROPANE BUTANE (LPG)
- ANESTHETIC GASES OPTICAL WARNING
- ACOUSTIC WARNING CONNECTION FOR 2 SENSORS



GPS tracking systems.....512

Wireless alarm systems.....513 – 515

Gas alarms and smoke detectors.....516 – 518

Door locks.....519 – 524

Anti-theft protection.....525

Safes/vaults.....526 – 528

Marten protection.....529

Safety on the road.....530

Fire extinguishers/warning signs.....531

4G version now also available for e.g. Switzerland

Connection to vehicle battery

Delivery without smartphone

Data flatrate for all of Europe

GPS tracking complete set easyWire for direct connection to vehicle battery

- Position detection via GPS and GLONASS
- Real-time accurate tracking of vehicles via GPS
- Easy installation directly to vehicle battery (10-32V)
- Incl. SIM card and 12 months of Europe widenedata flatrate after which renewal is subject to charge via app
- No contract binding, no hidden additional costs
- Free YUKAtrack app for all iOS and Android smartphones
- Integrated rechargeable battery (3.7V, 45mAh) for short-term mobile use

GPS tracking box including SIM card and free app. YUKAtrack - all in one package! Suitable for cars, motorhomes, vans and trucks. List of countries and available languages: Albania, Austria, Bosnia and Herzegovina, Bulgaria, Croatia, Cyprus, Czech Republic, Denmark, Estonia, Finland, France, Germany, Greece, Hungary, Ireland, Italy, Latvia, Lithuania, Luxembourg, Malta, Macedonia, Montenegro, Netherlands, Norway, Poland, Portugal, Romania, Serbia, Slovakia, Slovenia, Spain, Sweden, Switzerland, Turkey, UK.

Technical data: Nano SIM, memory: 128MB internal flash memory, integrated battery: 3.7V/45mAh, EU data flatrate for 12 months. (Current costs for contract renewal can be found in app or at www.yukatrack.com)

Scope of delivery: 1 x YUKAtrack GPS tracker including SIM card with data flatrate for 12 months in Europe, 1 x Quick Start Guide.

2G version	47056	119,-
4G version (e.g. for Switzerland)	47057	219,-

Connection via vehicle OBD2 interface

Delivery without smartphone

Data flatrate for all of Europe

2G GPS tracking complete set with on-board diagnostic interface (OBD2)

- Position detection via GPS and GLONASS
- Real-time accurate tracking of vehicles via GPS
- Easy installation via vehicle OBD2 interface
- Power supply: 10-32V
- Incl. SIM card and 12 months of Europe widenedata flatrate after which renewal is subject to charge via app
- No contract binding, no hidden additional costs
- Free YUKAtrack app for all iOS and Android smartphones
- Integrated rechargeable battery (3.7V, 45mAh) for short-term mobile use

GPS tracking box including SIM card and free app. YUKAtrack - all in one package! Suitable for cars, mobile homes, vans and trucks.

List of countries and available languages: Albania, Austria, Bosnia and Herzegovina, Bulgaria, Croatia, Cyprus, Czech Republic, Denmark, Estonia, Finland, France, Germany, Greece, Hungary, Ireland, Italy, Latvia, Lithuania, Luxembourg, Malta, Macedonia, Montenegro, Netherlands, Norway, Poland, Portugal, Romania, Serbia, Slovakia, Slovenia, Spain, Sweden, Switzerland, Turkey, UK.

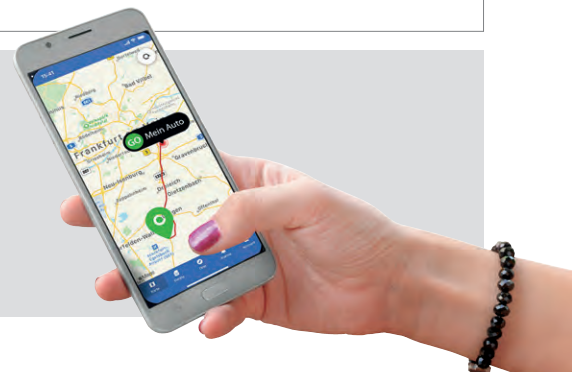
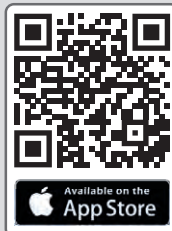
Technical data: Nano SIM, memory: 128MB internal flash memory, integrated battery: 3.7V, 45 mAh, EU data flatrate for 12 months. (Current costs for contract extension can be found in the app or at www.yukatrack.com)

Scope of delivery: 1 x YUKAtrack OBS2 GPS tracker incl. SIM card with 12 months data flatrate in Europe, 1 x Quick Start Guide.

2G OBD version	47054	119,-
-----------------------	--------------	--------------



Download the free YUKAtrack App for iOS & Android here:



CAN bus wireless alarm system for Volkswagen Transporter 6.1/6, Fiat Ducato, Volkswagen Crafter/MAN TGE

- Easy installation through vehicle-specific basic alarm kits
- No complex cabling required thanks to wireless sensors
- Combine optional wireless sensors, up to 55 sensors can be connected

The basic alarm kits are optimally matched to respective vehicle type. Combine basic alarm kit with up to 55 wireless alarm sensors as required. Sensors send permanent radio signal to CAN bus adapter and thus ensure constant vehicle monitoring. Operate the alarm system with the remote control in your original vehicle key or via the

optionally available radio remote control. Secure windows, doors and backflow flaps of your motorhome or camper with the optional wireless alarm sensors.

Download assembly instructions here



VW T6.1/T6



VW Crafter/MAN TGE



Ducato (2011-2020)



Ducato (>2021)

Vehicle-specific CAN bus basic alarm kits

- For Volkswagen Transporter 6.1/6, Volkswagen Crafter/MAN TGE, Fiat Ducato
- Can be combined with up to 55 wireless alarm sensors (optionally available)

Suitable for: Volkswagen Transporter 6.1/6, Volkswagen Crafter/MAN TGE, Fiat Ducato

Technical data: Power supply: 12V, frequency: 433.92MHz, current consumption when alarm is switched on <15mA, operating temperature -30° C to +70° C, volume 118dB.

Scope of delivery: CAN bus basic alarm kit, vehicle specific cabling set, siren, mounting material, operating instructions.

Assembly: The external siren is mounted in the engine compartment using a vehicle specific bracket. The basic alarm kit is mounted in the dashboard, the wiring is connected to existing vehicle cables (in various locations).

Volkswagen Transporter 6.1/6 >2015

47491

226,-

For Fiat Ducato / Citroën Jumper /

Peugeot Boxer / Iveco Daily >2011

47490

226,-

For Volkswagen Crafter / MAN TGE >2017

47492

226,-

from 226,-

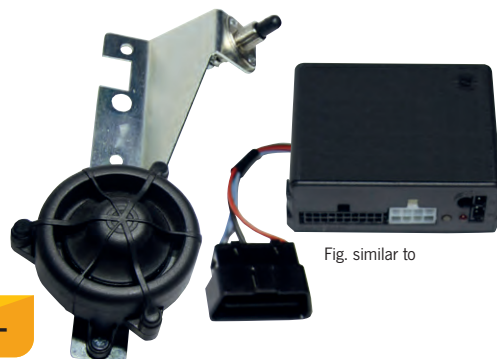


Fig. similar to

Wireless sensors can be combined as needed

Wireless window sensor for motorhome windows

① **Wireless tilting sensor** specially for hinged windows. Unobtrusive, no visual disturbance. The one-piece sensor is simply glued to the window pane. Compact size L x W x H: 42 x 30 x 13mm.

47499

69,90

② **Wireless window sensor with integrated pressure switch** No counter contact required thanks to pressure switch tech. Incl. 3 adapter plates to mount on windows from Dometic, Polyplast and other manufacturers. The adapter plate is screwed onto the window frame. Scope of delivery: Wireless window sensor, 3 adapter plates, battery, mounting acc.

47482

56,50



Wireless magnetic contact for protection of doors, backflow flaps, roof hatches or windows

The wireless magnetic contact is screwed onto flap/door and frame. 2 pcs. incl. batteries and mounting acc.

47481

56,50



360° infrared indoor wireless sensor

- Sufficient for monitoring the full living space of vans and small motorhomes without need for additional sensors
- Suitable for ceiling mounting, very compact and hardly visible

PIR technology (passive infrared sensor): Sensors register infrared radiation or heat emitted by objects. When a sharp increase in room temperature is detected, the system triggers the alarm.

47483

77,-



Wireless motion sensor/ anti-theft sensor

- Attached to objects outside the vehicle (e.g. bicycle). If the object moves, the main alarm unit is triggered.
- Concealed mounting possible

47484

73,50



Wireless remote control

- To activate/deactivate the alarm system for multiple users

47485

56,50





WiPro III + WiPro III safe.lock
CAN bus wireless alarm systems for motorhomes

- Simple, intuitive handling: Vehicle locked/alarm armed
- Wireless magnetic contacts without cables!
- Staying in the vehicle possible without deactivating sensors
- Control of control panel via wireless vehicle key and hand-held wireless transmitter
- Easy add 2.0: Subsequent coupling of wireless acc. via handheld wireless transmitter or car doors
- Up to 100 wireless modules can be coupled
- Up to 75 meters wireless range (open field)
- Copy-proof thanks to over 4 billion codes
- Jamming detection "anti jamming"
- Remote alerting and detection w/ Pro-finder (opt.)



Technical data:

Consumption app. 11mA, power supply 12/24V, alarm app. 102dB Control panel weight: app. 90g, control panel dim. (W x H x D): 80 x 80 x 29mm

Scope of delivery:

WiPro III or WiPro III safe.lock control panel, LED status, wireless hand-held transmitter 868, wireless magnetic contact black 868, cable harness, mounting material, warning sticker, manual

WiPro III safe.lock

Suitable for: Fiat Ducato, Jumper, Boxer, Iveco Daily >2006, Toyota Proace Max, Opel Movano >2021 **470904 479,-**

Suitable for: Ford Transit >2019 Switch lock can be activated in the vehicle **470914 479,-**

Suitable for: MAN TGE, VW Crafter II, VW T6/6.1, Mercedes-Benz Sprinter >2018 **470915 479,-**

WiPro III

Suitable for: Ford Transit >2006 **470901 429,-**

Suitable for: Mercedes-Benz Sprinter >2006, Mercedes-Benz Vito >2014, VW Crafter >2006, MAN TGE >2017 **470902 479,-**

Suitable for: VW T5 2003 – 2015, VW T6 >2015, Renault Master >2003 as well as vehicles without CAN bus and other models **470903 429,-**

Download THITRONIK® app now!

- ✓ Arming/disarming your alarm system*
- ✓ Locking/unlocking*
- ✓ Vehicle location detection with GPS**
- ✓ Learning mode for wireless modules*... and
- ✓ many other functions

Download on the **App Store** GET IT ON **Google Play**

*only together with WiPro III safe.lock and BLUETOOTH® network module or Pro-finder
**only together with Pro-finder

Accessories for WiPro III + WiPro III safe.lock:



① **NFC module – keyless entry for retrofitting**
NFC module serves as virtual key for arming/disarming your alarm system using transponder card or with NFC tag accessory (key hanger), the bracelet or a compatible credit card. The perfect control solution for WiPro III and WiPro III safe.lock. WiPro III safe.lock owners can also access their central locking system and unlock/lock their vehicle without a key. Scope of delivery: NFC module, batteries, transponder card. **470920 167,-**

KeyCard (transponder card)	470921	19,-
KeyTag (tag)	470922	19,-
KeyStrap (silicone bracelet)		
size M, color black	470923	25,-
size L, color black	470924	25,-

② **Wireless hand-held transmitter 868**
470909 69,-

③ **Wireless magnetic contact 868:** Self-adhesive wireless magnetic contact w/ tamper protection for securing windows, doors, backflow flaps, roof boxes, roof hatches, etc. **Black 47093 69,-**
White 470930 69,-

④ **Wireless cable loop 868:** Secures your mobile goods outside the vehicle. Wireless cable loop alarms in case of cutting or sabotage. **White, length 2.5m 47089 91,-**
White, length 5.0m 470900 97,-
Black, length 2.5m 47083 91,-
Black, length 5.0m 47084 97,-

⑤ **Wireless gas detector 868:** For connection to 12/24V. Wirelessly reports anesthetic gas attacks and gas leaks (propane/butane). **47096 125,-**

⑥ **G.A.S. connect:** As an extension of WiPro III (safe.lock). Alerts in the event of anesthetic gas attacks and leaks in the on-board gas system. The intelligent, dynamic temperature adjustment and the constant sensor self-check ensures flawless function under a wide range of climate conditions. **80307 125,-**

⑦ **Additional siren, 12V 80222 39,-**
Ext. back up siren, 12V, battery buffered. Warns in case of power supply failure or sabotage. (w/o fig.) **80219 49,-**

⑧ **Mounting adapter:** For optimal installation of the wireless magnetic contacts on the door sealings of the backflow flaps. **White 472269 17,-**
Black 472262 17,-

Network module for WiPro III

- Controlling the WiPro III via Bluetooth®
- Control central locking via smartwatch/smartphone (only together w/ WiPro III safe.lock)
- Easy add 3.0: Subsequent pairing of wireless accessories via app

This module couples the smartphone with WiPro III alarm system via app and Bluetooth in vicinity of motorhome, the authorized user can conveniently arm or disarm system at any time. With a WiPro III safe.lock, which also accesses the existing central locking system, vehicle can be opened and closed without vehicle key or hand-held transmitter. Network module can also be integrated if Pro-finder locating system is already installed.

Technical data:

Nominal voltage: 12/24V, BLUETOOTH® 5.0 low energy, temp. range: -20 °C to +80 °C, wireless range (open field): app. 10m Operating voltage: 12/24V, dim.: (W x H x D) 52 x 25 x 56mm, weight: 72g.

470910 129,-


Pro-finder: Location solution for WiPro III / WiPro III safe.lock & as "stand alone" location detection system

- For remote immobilization of vehicle in combination w/ shut-down device
- Receive alarm messages via SMS or phone call
- Locate stolen vehicle
- Can also be used without alarm system
- Control alarm system remotely via SMS or call
- Geofencing (virtual fence) through WiPro
- Easy add 3.0: Subsequent pairing of wireless acc. via app
- SMS costs only incurs in emergency (SIM card must be SMS, telephony and data-capable)
- Integrated GPS receiver & GSM antenna
- Voltage monitoring
- Special caravan mode
- Load switch-off in event of deep discharge, battery monitoring w/ undervoltage alarm

Technical data: Power supply: 12/24V, current consumption transmit: approx. 37mA, current consumption stand-by: approx. 16 - 21mA, nr. of destination no.'s: up to 10, interface: RJ10 (input for WiPro), outputs: 2 x open collector (max. 0.5A), weight: approx. 129g, temp. range: -10 °C to +80 °C, dim.: (W x H x D) 125 x 27 x 135mm

472176 479,-



Compatible with the Thitronik app

Download on the App Store

GET IT ON Google play

Accessories for Pro-finder:

- ① **Shutdown relay** to decommission the vehicle. **80259 35,-**
Shutdown relay for Ducato (facelift 08/2024) **802591 59,-**
- ② **GSM antenna (2m cable)**): Ensures a secure mobile phone connection in areas with poor reception. Is screwed onto antenna socket instead of antenna rod. **472178 66,-**
- ③ **GPS-pro (external GPS)**
 Used when internal GPS receiver of Pro-finder is covered by metal parts e.g., and therefore has no reception. Cable length: 2m **472177 129,-**


TSA wireless smoke detector

The TSA wireless smoke detector can be integrated into the THITRONIK® security system and does not only warn of break-ins, theft and gases, but also of smoke and fire – a safety advantage, especially at night, as the sense of smell is impaired when you sleep. The alarm is not only triggered by the 85dB signal of the TSA, but also by vehicle indicators and horn. With Pro-finder, the vehicle owner and up to ten other people also receive an SMS notification. The TSA can also be used without the THITRONIK® system and is ideal for installation in rear garages when charging e-bikes.

Scope of delivery: TSA wireless smoke detector, operating instructions, mounting material, warning sticker

Technical data: Power supply 3V (1.6Ah) lithium battery, current consumption 13.2µA at 2.9V, alarm 85dB at a distance of 3 meters, temperature range -10 to +55 °C, dimensions (W x H x D) 50.8 x 42.5mm, weight 59g.

- ① TSA wireless smoke detector, white **80308 89,-**
- ② TSA wireless smoke detector, gray **80309 89,-**
- ③ Adapter for wall mounting, white **803080 7,-**
- ④ adapter for wall mounting, gray **803090 7,-**



Please note the following when installing the gas detectors: Carbon monoxide (CO) is lighter than air, so install sensors above sleeping height. Butane/propane gas and anesthetic gases are heavier than air, so mount the sensors close to the ground.



GBA-I

- Detects KO/anesthetic gas, propane & butane
- Integrated sensor and buzzer
- Operation also on 230V (optional)
- Automatic sensor self check
- Temperature compensation
- E1 type approval

Technical data: Power supply: 12/24V, current consumption: approx. 70mA, sensitivity: 50ppm, sound pressure: 85dB (internal siren), temperature range: -20 °C to +80 °C, dimensions: 38 x 100 x 27mm (W x H x D), weight: 60g

GBA-I	80235	109,-
Power supply 230V for GBA-I	80237	29,-
Universal connection cable for GBA-I	80236	26,-



G.A.S. plug "all in one"

- Detects KO/anesthetic gases, propane and butane
- Integrated sensor and buzzer
- Operation in cigarette lighter
- Automatic sensor self check
- Temperature compensation
- E1 type approval

Technical data: Current consumption: approx. 70mA, sensitivity: from 50ppm, alarm tone: approx. 85dB (int. siren), temperature range: -20 °C to +80 °C

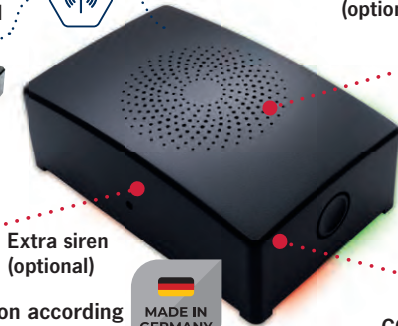
Scope of delivery: GAS plug, manual, alarm sticker

80200	97,-
--------------	-------------



Wireless connection to WiPro III

Additional sensor (optional)



Extra siren (optional)

CO sensor (optional)

- Gas detection according to DIN EN 50194-2
- Gas detection according to DIN EN 50291-2 (CO version)
- CI bus capable
- Detects propane and butane, anesthetic gases / carbon monoxide (depending on equipment)
- Permanent compensation for temperature and humidity



- Internal siren 94dB
- Continuous self check to determine functionality
- Alarm output/siren output
- Auto Sense input
- LED display for both sensors

Thitronik G.A.S.-pro III - CI bus compatible



The G.A.S.-pro III is a modular gas warning system for permanent installation in your vehicle and reliably warns you of gas poisoning and anesthetic gas attacks, with integrated siren and wireless unit. The G.A.S.-pro III is available in two basic setups: w/ integrated liquid gas/anesthetic gas sensor or w/ integrated CO sensor. Both versions can be combined with an additional gas or CO sensor. Internal siren sounds at a piercing 94dB, and an integrated humidity sensor optimizes the already accurate measuring in the event of high humidity in vehicle or breathing in direct vicinity of sensor. Accurate temperature adjustment is mandatory. In addition, an alcohol filter function eliminates false alarms caused by alcohol in the air. Thanks to integrated wireless unit, the G.A.S.-pro III communicates w/ the WiPro III alarm system without additional wiring.

Technical data:

Power supply: 12/24V, current consumption: 9mA (CO)/26mA (liquid/CO gas), sensor inputs: 1 internal, 1 external, sensitivity: 50ppm (CO) 700/1400ppm (butane), sound pressure: 94db (internal siren), temp. range: -20°C to +60 °C, dim.: (W x H x D): 61 x 97 x 35mm, weight: 74g.

G.A.S.-pro III - CO (carbon monoxide)	80256	279,-
Co-sensor	80223	99,-
Additional sensor	80257	65,-
Extra siren	80222	39,-



Thitronik G.A.S.-pro

- Detects KO/anesthetic gases, propane and butane
- Carbon monoxide sensor (optional)
- Concealed mounting possible
- External sensors for ideal placement
- Can connect to up to 3 sensors
- Siren and alarm output
- Service-friendly, plug-in sensors
- Connection for external LED (operation indicator)
- Automatic sensor self check
- E1 type approval



Technical data:

Power supply: 12/24V, current consumption: app. 80mA per sensor, 3 sensor inputs, sensitivity: from 50ppm, sound pressure: approx. 85dB (int. beeper) approx. 110dB (ext. siren), temperature range: -20 °C to +80 °C, dim. (W x H x D): 100 x 90 x 40mm, weight: 140g

Scope of delivery:

Control panel, sensor for anesthetic gases (propane & butane), mounting material, manual and alarm sticker

G.A.S.-pro	80220	159,-
Additional sensor	80221	65,-
CO sensor	80223	99,-
Extra siren	80222	39,-
Back up siren	80219	49,-
External LED, operating indicator when the installation of GAS-pro control panel is concealed.	802201	15,-

NEW



G.A.S.

Wall-mounted gas detector for propane, butane and anesthetic gases. The intelligent, dynamic temperature adjustment and the constant sensor self check ensures flawless function under a wide range of climate conditions. Easily and quickly connected to the vehicle electrical system, G.A.S. warns you in an emergency with its 82dB loud alarm.

Technical data: Power supply: 12/24V DC, current consumption: approx. 28/15mA, volume: 82dB at 1m, temperature range: -20 to +80 °C, dimensions: 30 x 88 x 26mm (W x H x D), weight: approx. 35g

Scope of delivery: G.A.S. with integrated siren, connection cable 12/24V, operating instructions, warning sticker, mounting material.

G.A.S.	80306	109,-
---------------	--------------	--------------



① GasStick - USB gas detector

- Warns of propane/butane gas (LPG) and anesthetic gases
- Easy installation via USB port in the vehicle
- Very low power consumption: Standby: 20mA / alarm: 22mA

The extra compact GasStick is supplied w/ power via USB port (USB 2.0) in vehicle and reliably warns of propane, butane gas (LPG), anesthetic gas thanks to extremely high quality and small MEMS technology (Micro Electro Mechanical Systems). An integrated LED indicates the device status. Acoustic warning signal: approx. 70dB. Minimalistic design and uncomplicated installation make the GasStick a mobile gas alarm for most energy sources with a USB connection. Insensitive to temperature fluctuations and humidity. Dim.: L x W x H approx. 77 x 28 x 10mm.

80267 74,95

② GasCube - Gas alarm with fine design

- Warns of propane/butane gas (LPG) and anesthetic gases
- Visual and audible indication of operational readiness, calibration phase and alarm

Fixed connection to 12V on-board power supply. Pressure switch. Ready for operation after app. 3mins. With high sensitivity sensor and 80dB loud siren. Temperature controlled sensor that works reliably even above 25°C. Power consumption in standby: 100mA, power consumption in alarm: 180mA. Mounting: approx. 100cm above the ground. Dim.: 55.6 x 86.7 x 24mm.

Color: matte white 802482 64,95

③ Counter display w/ 10 x GasCube matte white 802480 633,-

④ GasCubeTwin

Equipment identical to above mentioned GasCube, but w/ connection possibilities for 2 opt. additional sensors. These detect gas concentration in the air just as effectively as the main sensor and offer additional safety in case of rising and falling gases. Cable length is 2.7m. There are 3 possible combinations of additional sensors:

1. 2 x sensor for detection of CO gas (carbon monoxide)
2. 2 x sensor for detection of LPG gas/anesthetic gas
3. 1 x CO gas sensor + 1 x sensor LPG gas/anesthetic gas

Color: Matte anthracite 802483 69,95

⑤ Additional sensor CO gas (carbon monoxide) 802484 29,90
Cable length: 2.7m

⑥ Additional sensor propane/butane gas (LPG) 802485 29,95
Cable length: 2.7m

⑦ LPG gas detector at a TOP price

Reliably warns of gas leaks. Acoustic alarm: 85dB, installation height for butane/propane gas detection: approx. 20 to 40 cm above floor. 12V, power consumption: 100mA. Temp. range: -10/+50°C. Dim.: 115 x 70 x 60mm. Scope of delivery: LPG gas detector, mounting material

80216 29,95

⑧ 2 in 1 combi gas detector

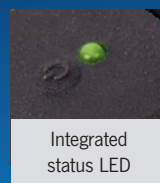
- Detects natural gas / LPG / CO gas
- 2 integrated sensors
- Self check function, audible and visual alarm
- Includes wall bracket for easy installation

Operating voltage: 12V, temp. range: -10°C ~ +50°C

Alarm volume: 85dB, power consumption: standby 90mA / with alarm

120mA, dim.: 125 x 80 x 40mm 802180 39,90

- ① 12V PROPANE BUTANE (LPG) ANESTHETIC GASES
- USB MEMS-TECHNOLOGY



- ② 12V 24V PROPANE BUTANE (LPG) ANESTHETIC GASES
- OPTICAL WARNING ACOUSTIC WARNING



- ④ 12V PROPANE BUTANE (LPG) ANESTHETIC GASES
- OPTICAL WARNING ACOUSTIC WARNING CONNECTION FOR 2 SENSORS



- ⑤ 12V PROPANE BUTANE (LPG) ANESTHETIC GASES
- OPTICAL WARNING ACOUSTIC WARNING



- ⑥ 12V PROPANE BUTANE (LPG) ANESTHETIC GASES
- OPTICAL WARNING ACOUSTIC WARNING



- ⑦ 12V PROPANE BUTANE (LPG) ACOUSTIC WARNING



- ⑧ 12V PROPANE BUTANE (LPG) OPTICAL WARNING ACOUSTIC WARNING



3-Sicur gas alarm

Gas alarm for recreational vehicles with a highly sensitive sensor that can detect propane/butane, carbon monoxide and anesthetic gases. The device automatically calibrates itself and emits an acoustic signal in the event of an alarm. A buffer battery (not included) guarantees functionality even in the event of a power failure on board. 3-Sicur can be used mobile or with a permanently installed device. It is equipped with a single button for power on, power off, test and reset, LED indicator lights and a 12V plug.

802010 99,90

- 12V ANESTHETIC GASES
- Carbon monoxide ACOUSTIC WARNING PROPANE BUTANE (LPG)



GAS ALARMS / SMOKE DETECTORS



12V



Gas alarm "BMTG" 12V LPG and anesthetic gas alarm

Reliably and quickly detects LPG and anesthetic gas and triggers an audible alarm (85dB) even at low gas concentrations. Also fits into mounting frame "Berker Integro". The average sensor lifetime is 10 years. Voltage 12V DC, consumption: 75mA. Audible alarm signal approx. 85dB. Supplied w/ mounting frame. Dims. 119 x 60mm.

Grey 802030 106,-
Brown 802040 106,-



12V



Gas alarm "BMTCO" 12V carbon monoxide detector, warns of exhaust fumes in vehicle

Reliably and quickly detects carbon monoxide and triggers an audible alarm (85dB) even at low gas concentrations.

Also fits into mounting frame "Berker Integro". Voltage 12V DC; Consumption: 15mA. Acoustic signal at alarm approx. 85dB.

Supplied w/ mounting frame. Dims. 119 x 60mm.

Grey 802050 146,-
Brown 802060 146,-



12V



MADE IN GERMANY

AMS gas combination alarm device compact

- Ideal for use in caravans, motorhomes or truck cabs with small room volume
- Warns for liquid and anesthetic gas
- For detection of propane, butane, methane and anesthetic gases (KO gas attack)
- Dangerous anesthetic gases are detected even at lowest concentrations, well before they develop their anesthetic effect
- Low power consumption in normal operation of app. 90mA, 12V

Response waves

Butane approx. 0.4% / propane approx. 0.5% / methane approx. 0.8% / anesthetic gas from approx. 100ppm.

Display: Yellow LED = start-up phase / green LED = operating display / red LED = (3 x) for alarm message, acoustic warning signal via electric siren with a volume of 85dB (A)
Dimensions: W 115 x H 90 x D 30mm.

80210 132,-



Battery-operated smoke detectors



24,90

- Monitoring area <6m Height: 60m²
- Battery operation with 9V battery block (not included)
- With test button for function test

Alarm as sound and light signal, alarm volume: 85dB, dimensions: Ø 130 x 40mm, including ceiling bracket for mounting.

80300 24,90



12V



TriGas alarm for propane/butane/KO gas

- Warns for anesthetic gases
- Visual and audible indication of operational readiness, calibration phase and alarm

Fixed directly to surface-mounted battery. Pressure switch. Ready for operation after approx. 1min. With high-sensitivity sensor and approx. 80dB loud siren. The TriGas alarm checks sensor function each time it is switched on and automatically calibrates itself to ambient air and temperature. Intelligent electronics carries out following steps every 40sec. performs calibration check and adjusts it if necessary. TriGas alarm has temp. control and compensates for differences so detection of dangerous gases also works reliably at temperatures above 25°C. LED display: Green (flashing) = calibration phase, green (continuous) = everything OK, red (flashing) = 20sec. Pre-alarm without sound, red (continuous) = alarm + continuous alarm sound (approx. 80dB)

80247 109,-

Optional additional sensor (not shown) Placed 10cm below ceiling)

802470 49,-

Security locks for cabin doors

- High-quality craftsmanship from anodized aluminum 2017
- Drill-proof core for additional strength
- Stainless steel screws
- Developed and manufactured in Europe



Fiat Ducato 2006-2021 For panel vans and motorhomes, installation on inside of cabin doors. Left and right keyed alike. Dims.: L180 x W165 x D45mm, weight: app. 0.9kg. Scope of delivery: 2 x locks w/ mounting material and 3 keys.

464354 192,80



Universal surface-mounted lock for sliding and rear doors Can be fitted to camping buses and vans. Dims.: L180 x W165 x D45mm, weight: approx. 1kg. Scope of delivery: 2 x locks w/ mounting material and 3 keys, incl. mounting template.

464355 213,-



Universallock for surface-mounted doors External locking w/ key, locking and unlocking from inside via twist lever. Mounting possible on all motorhomes and caravans. There must be a distance of min. 16mm inside next to door to mount the twisting lever. Dims.: L250 x B140 x D50mm, weight: app. 1kg. Scope of delivery: 1 x lock w/ mounting material and 2 keys.

464350 126,50



Universal built-in lock for service compartment doors Can be fitted to all motorhomes and caravans. Dims.: L250 x B140 x D50mm, weight: approx. 0.8kg. Scope of delivery: 1 x lock w/ mounting material and 2 keys, incl. mounting template.

464352 114,90



Universal surface-mounted lock for service compartment doors Can be fitted to all motorhomes and caravans. Dims.: L250 x B140 x D50mm, weight: app. 0.8kg. Scope of delivery: 1 x lock w/ mounting material and 2 keys.

464351 92,90

SAFETY LOCKS FOR PANEL VANS AND MOTORHOMES



- HEOSafe® locks provide additional theft protection
- Easy operation, one handle to lock/unlock the door
- Easy installation in the armrest or on door frame
- Robust and light due to die-cast aluminum
- Individual parts assembled w/ spring pressure system (prevents rattling or vibrating)
- Special security cylinder w/ protective cap and robust reversible key



HEOSafe® -VAN Security for security of sliding, rear & hinged doors for VANs / panel vans



Also for Ducato 8
>YOC 9/21

Van security package Fiat Ducato, Boxer, Jumper, keyed alike Consisting of 2 locks for cabin doors and 2 exterior locks for sliding door and rear doors.

White, for YOC <09/21	467404	337,-
White, for model year >09/21 (Ducato 8)	467415	337,-
Black, for YOC <09/21	467408	337,-
Black, for model year >09/21 (Ducato 8)	467417	337,-

Van security package Mercedes-Benz Sprinter keyed alike Consists of 2 locks for the inside of the driver's cabin doors and 2 outside locks for the sliding door and rear doors.

White, >YOC 2018	467412	337,-
Black, >YOC 2018	467413	337,-

HEOSafe® set Carado/Sunlight 2014 – 2023



For Ducato 8
>YOC 9/21

- ① HEOSafe® 1958 additional lock
- ② HEOSafe® 12656/12856 for Ducato cabin door
- ③ HEOSafe® 1951 additional lock Carado/Sunlight

Carado/Sunlight 2014 – 2023 sets motorhomes

keyed alike		
Set with 12856 + 1951 + 2 x 1958 for >YOC 09/21 (Ducato 8)	464413	529,-



Universal locks Van Security for panel van

- For sliding, rear and hinged doors

Single lock 1760 White	467401	98,95
1760 grey/silver	467409	99,-
1760 black	467410	99,-
Set of 2, keyed alike		
1760-2 white	467403	198,-
1760-2 grey/silver	467411	198,-
1760-2 black	4674031	198,-



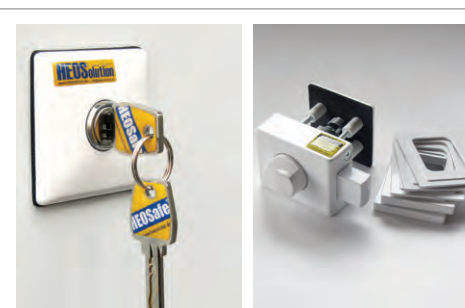
HEOSafe® interior security

- For sliding doors Fiat Ducato 250/290, Citroën Jumper/Peugeot Boxer >YOC 2006

Secures sliding door when you are inside vehicle. Material: Die-cast aluminum

1763	464411	89,-
------	---------------	-------------

HEOSafe®-Additional locks for superstructure doors, rear garages, flaps...



Universal additional lock

Specially for car body doors, exterior flaps, rear garages of motorhomes, caravans. For door thicknesses of 20 – 90mm. Scope of delivery: Lock incl. 5 spacers (3 x 2mm + 2 x 8mm thickness)

Single lock 1958 white	467532	109,-
Sets, keyed alike		
Set of 2 1958-2	467422	218,-
Set of 3 1958-3	467533	322,-



Mounting accessories for additional lock 1958

Makes installation of additional locks on car body doors w/ interior trim easier.

120118 Color white, adjustable up to 11cm.	467428	27,90
120134 Color white Specially for Carado/Sunlight car body doors >2024	467429	34,90



Door Frame Lock for car body doors

- For car body doors, rear garages, flaps on motorhome or caravan

Single lock 1750 white	467402	109,-
Set of 2, keyed alike 1750-2 white	467425	218,-

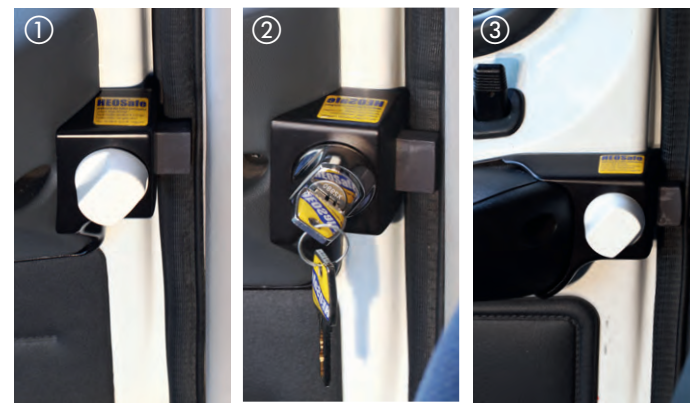
Fiat Ducato / Peugeot Boxer / Citroën Jumper / Opel Movano (>2021)



Fiat Ducato 250/290, P. Boxer, C. Jumper >YOC 2006, 1 pair
 Mounting: integrated in armrest
 ① **Twist lock**
 12646 For model year <09/21 and P. Boxer and C. Jumper 2006 – 2024
 467433 135,-
 12846 For model year >09/21 DUCATO 8 and P. Boxer and C. Jumper >Model 2025
 467430 135,-
 ② **With key**
 12656 For YOC <09/21 467432 159,-
 12856 For year of manufacture >09/21 DUCATO 8 467439 159,-

HEOSystem sets (1-key system):

keyed alike Set consists of 2 locks for cabin doors inside and 1 or 3 additional locks for the car body door or flaps/rear garage.
 Set from 12656 + 1958, for YOC. 2006 – 09/21 467434 264,-
 Set with 12856 + 1958 for YOC >09/21 (Ducato 8) 467444 264,-
 Set with 12656 + 3 x 1958, for YOC 2006 – 09/21 467436 473,-
 Set with 12856 + 3 x 1958 for YOC >09/21 (Ducato 8) 467445 473,-



Fiat Ducato 244, P. Boxer, C. Jumper YOC 2002 – 2006, 1 pair
 Mounting: w/ existing screws on door handle
 ① 12146 Twist lock 46741 129,-
 ② 12156 With key 46742 159,-

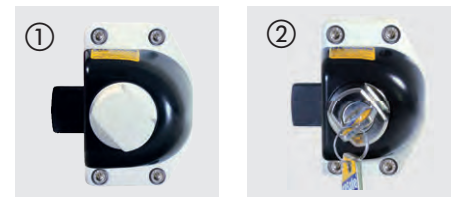
Fiat Ducato 230, P. Boxer, C. Jumper YOC 1994-2002, 1 pair
 Installation: W/ existing screws on door handle
 ③ 1246 Twist lock 46796 99,-

Renault Master / Opel Movano (<2021) / Iveco Daily / Nissan NV400 / Ford Transit

Renault Master, Opel Movano, Nissan NV400 YOF 2010 – 2024, Iveco Daily >YOC 2014, 1 pair
 Mounting: On inside of the door frame
 ① 15146 Twist lock 45717 135,-
 ② 15156 With key 457171 159,-

Renault Master, Opel Movano YOC 2000–2010, Iveco Daily YOC 2000–2014, 1 pair
 Mounting: On inside of the door frame
 ① 1546 Twist lock 46751 135,-
 ② 1556 With key 467511 159,-

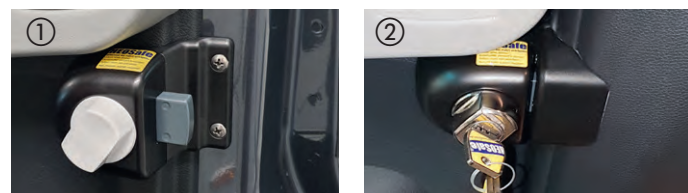
Ford Transit, 1 pair Mounting: On inside of door frame
YOC 2000–2006
 ① 1446 Twist lock 46787 135,-
 ② 1456 with key 46788 159,-
YOC 2006–2013
 ① 14146 Twist lock 467871 135,-
 ② 14156 w/ key 467881 159,-
>YOC 2014
 ① 14646 Twist lock 467883 135,-
 ② 14656 With key 467882 159,-



HEOSystem sets (1-key system):

Ford Transit Sets (>YOC 2014)
keyed alike Set consists of 2 locks for cabin doors inside and 1 or 3 additional locks for car body door or flaps / rear garage.
 Set with 14656 + 1958 467885 264,-
 Set with 14656 + 3x 1958 467886 473,-

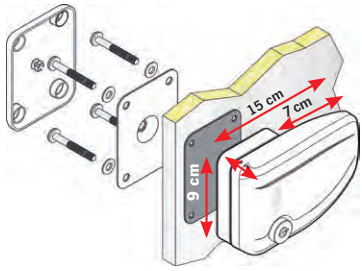
Mercedes-Benz Sprinter / Volkswagen Crafter



Mercedes-Benz Sprinter >YOC 2018
 Mounting: Inside of door frame, 1 pair
 ① 13846 Twist lock 467420 135,-
 ② 13856 With key 467421 159,-



Mercedes-Benz Sprinter, VW Crafter YOC 2006-2018
 Mounting: Inside of door frame, 1 pair
 ① 13146 Twist lock 467981 135,-
 ② 13156 With key 467991 159,-



from 73,-



Safe Door safety locks

The tried and tested Safe Door locks have been further improved. A new lock, new lock cover design w/ asymmetrical fixing point for easier replacement of security keys in event of loss.

① Safe Door exterior door safety

Security for motorhome doors. Also suitable for drawbar boxes, garage doors.

1 piece	White	467462	73,-
1 piece	Grey	467463	77,-
1 piece	Black	467464	77,-
Set of 3	White	467454	211,-
Set of 3	Grey	467455	219,-
Set of 3	Black	467456	219,-

② Safe Door Frame car body door lock

For doors & flaps. Mounting on aluminum door or flap profile, w/ 3 self-tapping screws. Necessary for vehicles that have no space for a counter plate to the left of the door.

1 piece	White	467485	76,-
1 piece	Grey	467486	79,70
1 piece	Black	467487	79,70
Set of 3	White	467492	218,-
Set of 3	Grey	467493	228,-
Set of 3	Black	467494	228,-

③ Safe Door Magnum external security

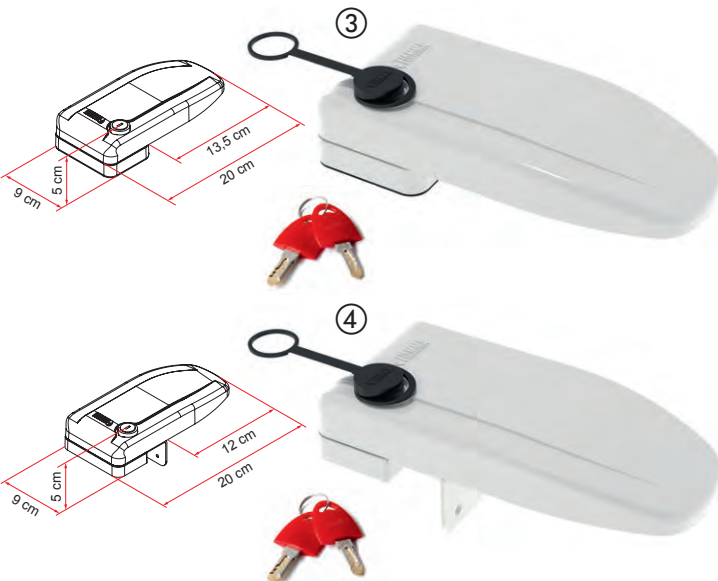
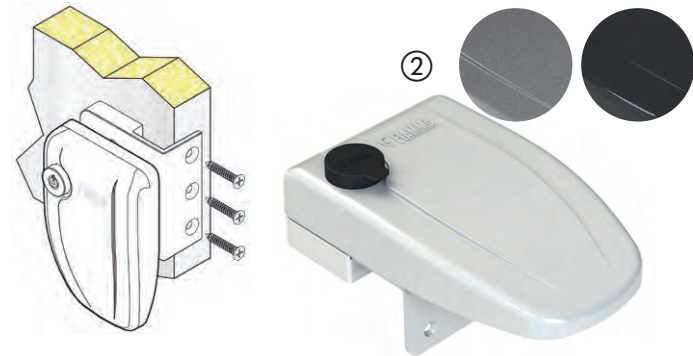
A total length of 20cm to also cover the lock of motorhome door. Attached to the wall w/ four screws and inner counter plate.

1 piece	White	467495	87,-
---------	-------	--------	------

④ Safe Door Magnum Frame car body door lock

A total length of 20cm to also cover lock of motorhome door. Mounting on aluminum door profile or garage profile w/ three self-tapping screws.

1 piece	White	467496	89,-
---------	-------	--------	------



Go on excursions w/ peace of mind - thanks to increased safety

① **Duo Safe Pro – safety bar**

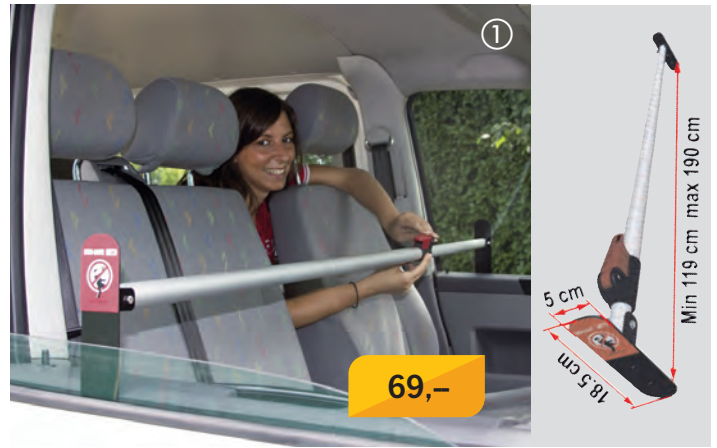
Robust safety bar to block the front doors of the motorhome.
Transport size: 123.5 x 18.5cm.
For Sprinter, Ducato, Boxer, Jumper, Master until 6/06

46734 69,-

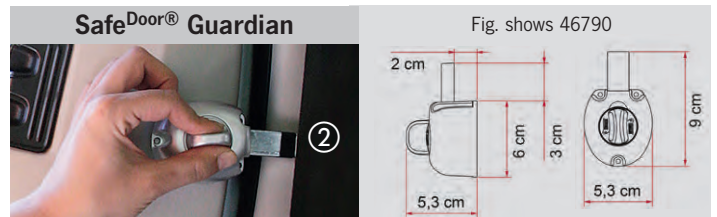
② **Safe Door Guardian – interior door security**

Security block installed inside the door or garage of motorhomes and caravans or cabin doors. Replaces the serial locks in their position using the same holes. Die-cast aluminum, no plastic parts. Kit consisting of 2 pieces:

Safe Door Guardian (2 pcs. in set)	46790	63,-
For Ford Transit <YOC 06/2000	46738	81,-
For Ford Transit >YOC 06/2000	467381	73,-
For Fiat Ducato <YOC 09/2009	467382	77,-
For Fiat Ducato >YOC 09/2009	467383	78,-



69,-



SafeDoor® Guardian

Fig. shows 46790



Further dimensional drawings available w/ this QR code



Door security & entrance aid security 31/46cm high

① **Security 31 or 46 – entrance aid and door security**

For motorhome & caravan doors. Folded over the door, protects against theft. Entrance aid for getting off and on. With sturdy padlock. Door hinge optionally left or right.

Scope of delivery: Bracket, lock, security bolt, mounting bracket, screws & inner counter plate. Color white.

Security 31 hanger 31cm high **91236 123,-**

Security 46 Bracket 46cm high for double entrance doors **91237 140,-**

② **Security Lock 31/46 – additional lock for kit**

Additional security lock for the entrance door. For retrofitting existing Security 31 or 46 door locks. Complete w/ lock & internal counter support.

912373 57,50

③ **Security 46 Pro – Entrance aid and door security**

46cm high with additional lock. Additional anti-theft protection when entrance door is closed.

Scope of delivery: Bracket, safety lock for door, safety bolt, mounting bracket, screws & inner counter plate.

912372 182,-



Security 46 Pro with additional lock for even more security



Thule Door Lock

- Suitable for doors, rear garages & service hatches

Additional, robust door lock. Permanently connected to vehicle wall w/ sturdy counter plate, seal and 4 M6 screws.

	45710	76,-
Set of 3, keyed alike	45712	218,-



Thule Door Frame Lock

- Suitable for doors, rear garages & service hatches

Door interlock, when inner mounting position (counter plate) is covered by furniture/not possible. Minimum door gap (5mm) required.

	45711	76,-
Set of 3, keyed alike	45713	218,-



Thule Van Lock

Safety lock for van rear and sliding doors. Suitable for all van models.

	45715	101,-
Set of 2, keyed alike	45716	192,-



Thule Cab Lock

Suitable for: Fiat Ducato and Ford Transit For securing the vehicle doors from the inside with a key. Suitable for Fiat Ducato and Ford Transit. (Adapter for Mercedes-Benz Sprinter and Renault Master on request).

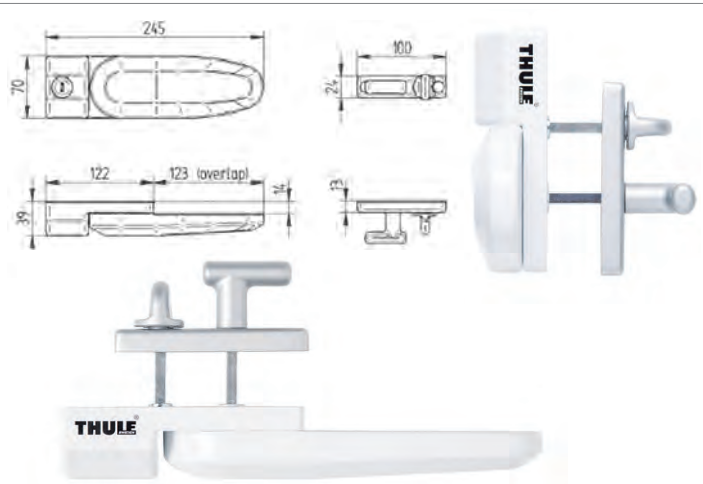
Set of 2, keyed alike	45714	146,-
------------------------------	--------------	--------------



Thule Security Handrail

Entrance aid and door protection for motorhomes and caravans, for right and left hinged doors. Aluminum white, weight approx. 2kg

45720	142,-
--------------	--------------



Thule Inside-Out Lock G2

For securing car body doors on motorhomes & caravans, inside and outside.

45721	127,-
--------------	--------------

CARBEST 



Tailgate opener - ventilation despite locking

- Close and lock the tailgate except for ventilation gap
- In this condition, the tailgate can no longer be opened from the outside
- Easy to install, no tools required
- Made of solid, powder-coated metal

Suitable for: Volkswagen Caddy 2003 – 2020, Volkswagen Transporter 6/5/4 Mercedes-Benz Vito >2003, Mercedes-Benz Viano 2003 – 2014, Ford Tourneo Custom >2013

46309 19,95

from 16,95



Box safeties

- ① **Box safety for the caravan/trailer** Secures coupled and uncoupled caravans or trailers against theft. Sturdy sheet steel housing with discus safety lock and 2 keys **913611 19,95**
- ② **Box safeties for the uncoupled caravan/trailer.** Sturdy sheet steel housing with discus safety lock and 2 keys **91361 19,99**
- ③ **Universal box safety for trailers, width adjustable** usable for all ball couplings and anti-lurching couplings. incl. discus lock and 2 keys **913614 99,95**
- ④ **Theft protection egg** Efficient anti-theft protection for caravans or trailers. Is inserted into the ball head, spread and locked. Incl. 2 keys **91226 16,95**

SARACEN coupling locks for AL-KO couplings Affordable solution to quickly secure the trailer coupling. ⑤ **Ultra:** For AK130, AK160, AKS1300, AKS2004 & AKS3004 **92522 90,20**

⑥ **Gullwing:** For AKS2004 & AKS3004 **92523 133,-**



Wheel clamp & U-lock

- ① **NEMESIS ULTRA steel wheel clamp** The supplied wheel bolt is suitable for use on caravans and trailers. Super easy use **92520 173,-**
- ② **NEMESIS PLUS MOTORHOME Heavy duty tire clamp lock** also for aluminum rims with 10 to 20 inch **92521 312,-**

CARBEST 



Steel wheel clamp

Wheel clamp for wheels up to 26.5cm wide. Scope of delivery incl. 2 keys. Dims.: app. 23 x 50cm, weight: approx. 2.3kg **913401 37,95**

CARBEST 

Universal U-lock for securing couplings with 2 keys. Weight approx. 2kg

92763 25,95



from 25,95

AL-KO
QUALITY FOR LIFE

U-lock for AL-KO couplings Universal U-lock, red color, for all AL-KO couplings (except AKS) incl. key ring with 3 keys. **92723 56,-**



AL-KO trailer locks

- Reliable theft / hitch protection for caravan drawbar
- Safety Ball can be used for stationary or mobile operation

- ① **AL-KO plug-in lock DBS8** **913492 9,90**
- ② **AL-KO plug-in lock AK13/15,AKS 2000** **91360 15,11**
- ③ **AL-KO AKS 1300 mortice lock** **91380 26,50**
- ④ **AL-KO U-lock, AK 160, AK300/350** **91373 25,40**



199,-

Volkswagen Transporter 6.1/6/5/4

Fits exactly under passenger seat console. Two installation options: 1. Door opening from footwell of front seats. 2. Operation from passenger compartment. Fastening via existing screw units of seat consoles. External dims. W 25 x H 13 x D33cm. Door hole dims. 22.4 x 10.4cm. Weight approx. 9.0kg **471344 199,-**



Volkswagen Crafter / MAN TGE > 2017

For installation in seat console on driver's or passenger's side. Mounting w/ original screw connection of console.

Dims. product: W 32 x H 12.5 x D 36cm
Weight: approx. 9.3kg

For rear door: Access to safe via back of console
471331 251,-

For door in front: Access to safe via front of console.
471332 251,-



Iveco Daily

For installation in seat console on driver's or passenger's side. Mounting with original screw connection of console.

Product dims.: W 22 x H 14 x D 40cm
Weight: approx. 7.8kg **471330 229,-**



Mercedes-Benz Sprinter >2019

Installation is carried out using robust screws in the standard opening and the holes in the seat console. Modifications or additional holes on the seat console are not necessary. For all vehicles with opening size 9.5 x 20cm in the console. Outer dims.: W200 x D95 x H300mm. Door clearance dims.: W200 x H95mm, weight: approx. 3.0kg **471333 229,-**



Fiat Ducato

Fastening via screw connections of seat console. Loosen front screw connections of console, place base safe underneath, tighten screws – done!

For type 244/X250 2001-2006 External dims. W 28 x H 18 x D26cm, weight approx. 9.0kg. **471342 199,-**

For type X250 + 290 >2006. External dims. W 28 x H 18 x D35cm, weight app. 11kg. **471343 238,-**

Laptop version for type X250 + X290 >6/2006, for 17" laptop driver's or passenger's side. External dims. (WxHxD) 28 x 18 x 45cm, weight approx. 14.0kg. **471347 336,-**



Mobile safe size 3 A - top door Outer dims. W 30 x H 16 x D 40cm, door clearance 36 x 26cm. 4 holes in bottom for fixed mounting. Weight approx. 12kg **471441 266,-**



Standard Safe G3 - Top door Outer dims. W 25 x H13 x D 22cm, door clearance dims. 22.4 x 19.4cm. 4 holes in bottom for fixed mounting. Weight approx. 6.5kg. **471421 166,-**



Standard Safe G5 suitable for 17 inch laptop

Door on top w/ sturdy handle. Delivery includes 2 base plates, lock, handle and floor padding. When dismantled, base plates remain on the floor and loading space can be fully utilized. External dims.: W 50 x H 18 x D 36cm.

Weight approx. 19kg. **47142 319,-**

Safes for floor storage compartments



For ADRIA

Suitable for almost all common Adria vehicles w/ floor storage compartments. Door on top with spring handle. Delivery includes mounting material. External dims.: W 40 x H 14 x D 38cm. Weight approx. 9.0kg
471410 285,-



Globecar/ Pössl 2010 Door above, w/ spring handle

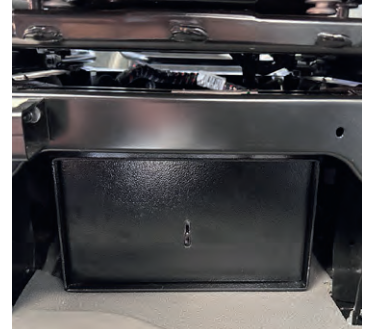
Outer dims. W 37 x H 14 x D 49cm, door clearance 33 x 45cm. 4 holes in bottom for fixed mounting. Weight approx. 14kg
471442 290,-



185,-

Insert safe for Volkswagen California Coast and Ocean

Suitable for the models Coast, Coast 30 Years reflex silver metallic, Coast 30 Years indium grey metallic, Coast Edition, Ocean, Ocean Edition & Ocean gray/red/blue. Installation is located in cabinet back left. Fastening via existing holes in cabinet. Material: 5mm SM steel impact & scratch resistant powder coating. Dims. (WxDxH): 320 x 400 x 60mm
 Weight: approx. 5.8kg
471400 185,-



Volkswagen Grand California

Developed to fit the Volkswagen Grand California perfectly. Safe is bolted to driver's or passenger's seat console using the original fastening screws. No holes need to be drilled. Dims. (WxDxH): 260x380x125mm
 Weight: approx. 8kg

Front door

(to be opened in direction of passenger's footwell)

471401 249,-

Rear door

(opens towards the living room)

471402 249,-

Door safes



For Fiat Ducato

Can be mounted on driver's or passenger's door of original Fiat cab doors from YOC '06 (type x250 and x290 possible). Original attachment points of the map pocket located there are used for this purpose. Provides space for a 15-inch notebook. Secured with 3-bolt locks. **2006 – 08/2019**
 Dims. H 330 x W 550 x D 140mm, weight approx. 7.0kg. **471346 322,50**

09/2019 – 09/2021

Dimensions H 525 x W 135 x D 325mm, weight approx. 8.0kg. **471348 322,50**

>09/2021 (only for passenger door)

Dims. H 265 x W100 x D 115mm, weight approx. 4.2kg. **471349 249,-**



Ford Transit >06/2019 (passenger's side)

Specially developed for passenger door of Ford Transit from YOC 06/2019. Safe is mounted in door compartment w/ a mounting plate that can be locked and is not visible from the outside. Lid is protected from prying because there are no attachment points. Safe is equipped with a 3-bolt lock with 7 tumblers. External dims: WxDxD 275x70x165mm, weight: approx. 3.5kg. **471350 249,-**



Puncture protection plate for Eurochassis door handles such as Fiat Ducato, Citroën Jumper, Peugeot Boxer >2006

The stab protection plate is mounted between the door handle and the vehicle body. Suitable for driver, passenger door and sliding and rear door. Prevents locking mechanism from being pried open under door handle (e.g. with a screwdriver). Made of robust stainless steel, precisely fitting the contour of the handle shell modeled. Fastening via the mounting holes of recessed grip, no separate holes in the door are necessary.

Scope of delivery: Two plates (top/bottom) in a set for one door **47010 33,90**

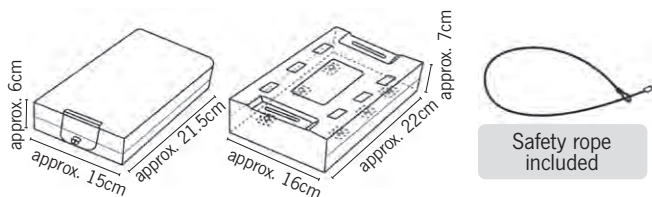


24,95

Safety - Transportable safety cassette

- Safety cassette incl. holder • Including safety rope
- With 2 keys
- Compact installation dimensions

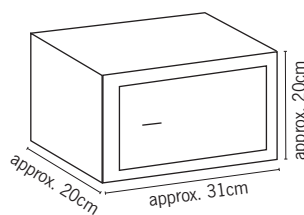
Safety can be quickly inserted or removed at any time thanks to supplied, firmly screwable bracket. Cassette is firmly connected to bracket by a tongue lock. Dimensions: Bracket approx. W16 x D22 x H7cm, cassette approx. W15 x D21.5 x H6cm. Internal cassette dimensions: W13.5 x D17.5 H6cm Weight: 1.7kg. Scope of delivery: Safebox, bracket, 2 keys, safety chain, mounting material. **47132 24,95**



Rex - Versatile furniture safe

- Solid steel body and door
- Double bolt locking (Ø 16mm)
- Including 2 double-bit keys

Secure your valuables such as jewelry, cash & documents in your motor-home, caravan, office or yacht. Holes for permanent mounting in cabinet or bookcase. Door hinge on the right w/ concealed screws
Internal dimensions of cassette: W 30.6 x D 15.5 x H 19.5cm Weight: 6.8kg. External dimensions: Approx. W31 x D20 x H20cm. Scope of delivery: Safe, 2 keys, mounting material. **47136 54,95**



Inconspicuous storage of valuables

- Perfect hiding place for cash, jewelry, etc.
- High quality & precisely produced according to original products
- Invisible twist locks, effortless to open
- Perfect for vacation, travel & home

Tin value deposit: The lid can be easily opened using an invisible twist lock. The splash-proof can has a volume of 850g. Ø 100mm, height 120mm. Weight: 123g.

- ① Erasco lentil stew **474731 14,95**
- ② Erasco chicken rice pot **474741 14,95**
- ③ Screwdriver **47470 14,95**
Handle can be screwed on effortlessly. Can be used as a real screwdriver. Length approx. 18cm.
- ④ Ballistol universal oil **47476 20,95**
Equal to an original Ballistol can. Base of can can be opened using invisible screw cap. Ø 65mm, height: 240mm. Weight 156g

- ⑤ **Safe can San Pellegrino Orange** Inconspicuous: Made from real beverage can (0.33l). The weight is also amazingly close to a filled can. Recessed safe container with 100ml capacity, splash-proof. Dimensions: Approx. H 11.5 x Ø 6cm **474712 19,95**





Scent remover special cleaning foam – For pretreatment

- Very adhesive effect foam
- Simplest handling
- Safe for electronics, plastic, rubber and paint

Strongly recommended before using any marten repellent! Removes scents of the marten. This means that a risky engine wash can be avoided. When engine is cold, spray entire engine compartment and inside of hood and fenders with entire contents and allow to react briefly. Simply rinse with water.

Spray can, 300ml, GP* 37,33 / 1 Liter **903945** **11,20**



Fragrance disc – Intense active ingredient – fragrance concentrate*

- Efficient for at least 6 months
- Tab for expiration date
- Can be stored unopened for approx. 3 years
- Without assembly

Scented disc with long-lasting effect, smells like a "dangerous enemy" to the marten. The simple fastening device with practical hook allows individual attachment. Can be used in car, house, garden or carport. Large evaporation surface provides intense release of fragrance. With only one fragrance disc it is possible to protect the entire engine compartment. Lasts for at least six months.

Danger: H317, H319



9039451 **17,40**

Antimarten spray intense active ingredient - fragrance concentrate*

- Long-term effect, lasts up to 2 years
- Monthly scale for marking the next re-spraying date
- Clean engine compartment thanks to fragrance reservoir

Marten repellent for spraying. Concentrate w/ long-term effect, smells "dangerous enemy" to martens. Regular, targeted application to the enclosed self-adhesive "fragrance storage devices" is sufficient.

Spray can, 200ml, GP* 98,00 / 1 Liter **9039452** **19,60**



4B battery ultrasonic device

- Battery driven
- Lasts up to 24 months
- 2 waterproof Piezo speakers
- Super slim design
- Frequency modulation against habituation
- Function control lamp, flashing LED
- Waterproof according to IP65, E1 marking of the KBA



Highly effective ultrasonic device w/ battery operation. Frequency-modulated ultrasonic sounds that signal "maximum danger" to marten through animal cries of fear & warning. No habituation effect.

Independent of on-board power supply due to operation w/ two 3-volt button cells (CR2477), long lasting approx. 24 months per battery set. Ideal for long-term parkers like classic cars, motor homes, exhibition vehicles or for carport.

Technical data: Radiation radius: 360°, angle of radiation: > 170°, sound pressure: approx. 110dB

9039454 **82,-**

2-speaker ultrasound machine

- 2 waterproof Piezo speakers
- Ultrasound w/ frequency modulation
- Simplest installation (already wired)
- On-board power supply, maintenance-free
- Function indicator light, flashing or steady LED
- CAN data bus suitable, E1 marking of the KBA

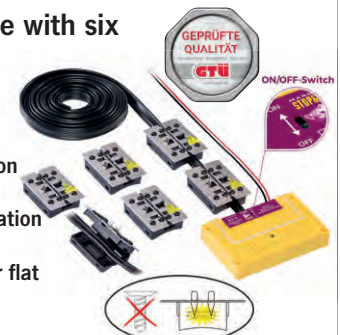


With 12 V on-board power supply. Frequency-modulated ultrasonic sounds that signal "maximum danger" to marten through animal cries of fear and warning. Avoidance of sound shadows due to two loudspeakers. Ideal for narrow & compactly installed engine compartments. Note: Ultrasound does not penetrate matter. **Technical data:** Radius of radiation: 360°, angle of radiation: 2 x 160°, sound pressure: approx. 105dB

9039453 **116,-**

Ultrasonic high-voltage device with six PLUS-MINUS CLIP stainless steel contact plates

- Sensor technology
- 12 Volt connection or battery operation
- 2 waterproof Piezo speakers (IP65)
- Frequency modulation against habituation
- Function control lamp, flashing LED
- Stainless steel contact plates in super flat slimline design
- E1 marking of the KBA



Clip fastening option of double-pole stainless steel contact plates makes installation easy & offers even more flexibility, especially for increasingly compact engine compartments. Connection to terminal 15 is omitted due to sensor technology. Thanks to a contact slide attached directly to the unit, the installation of a hood contact switch is also unnecessary.

Technical data: Radiation radius: 360°, angle of radiation: > 170°, sound pressure: approx. 110dB

7 PLUS-MINUS CLIP, with 12V connection **9039455** **242,-**
8 PLUS-MINUS CLIP, battery-operated **903946** **242,90**

STOP&GO Accessories:

Mounting bracket:

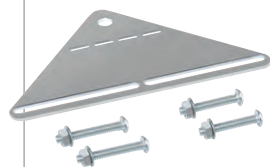
- For all STOP&GO marten repellent devices
- Simplified installation of all STOP&GO devices
- Mounting of marten repellent device in engine compartment w/ only one screw
- Individual alignment of ultrasound
- Mounting material included

9039459 **9,70**

High-temperature protective hose

- inner diameter 12.50mm
- Packed in tubes of 4 x 0.50 Universally applicable fiberglass aluminum flex hose for cables on catalytic converters, lambda sensors and soot particle filters. Extremely heat-resistant protective hose, effectively shields heat from up to 800 °C hot radiation sources, w/o internal heat build-up.

9039457 **32,95**



Protection against martens by ultrasonic sounds

Marder-Frei Plus (12V power supply)

Efficient and long-lasting protection against marten bites approx. 80dB sound pressure, 12-23kHz frequency in intervals. With function control LED. 12V DC, protection class IP 54

903943 **20,95**



Marder-Frei Mobil (battery-driven)

approx. 80dB sound pressure, 23kHz frequency in intervals. Effective radius approx. 40sqm. With function control LED battery operation, 6 x AAA/Micro (not included).

903944 **31,95**



*Handle biocides with care. Always read label & product information before use.



Europe sticker set, 6 pieces

Set of transparent base sticker (app. W60 x H50cm) w/ country outlines & pre-cut country fills in 5 colors w/ printed country names.

Europe sticker set **46438** **32,50**



Scan the qr-code and watch the video



LIFE-HAMMER®

Multifunctional emergency hammer

- Easily shatters car windows
- Integrated belt knife
- Non-slip handle
- Incl. Quick Click clamp bracket for car door

Simply press emergency hammer against vehicle's windshield & ultra-hard ceramic hammer head will automatically shatter the glass. Integrated belt knife. Easy and safe to use by adults & children thanks to non-slip handle. TÜV certified according to new German standards. The Quick Click holder allows you to attach emergency hammer to the inside of the vehicle door.

47540 **17,99**



Country flag stickers

- Pack of 2
- Dimensions: 145 x 125mm

Germany **464302** **3,90**
 Finland **464305** **3,90**
 Sweden **464303** **3,90**
 Norway **464304** **3,90**



Reserved-sign

For motorhomes & caravans, so that your campsite is not occupied by others. Dims.: 61.5 x 30cm

47085 **24,90**

24,90



Carfirst-aid bag

For vehicles. Content according to DIN & legal requirement of StVZO § 35h. Includes 2 disposable medical masks. **47127** **9,-**

Image similar

Incl. 2 disposable medical masks

Safety/instructionsticker

- ① 6-way distribution block Dims. approx. W45 x H100mm **75132** **4,75**
- ② Gas kitchen appliances Dims. approx. W85 x H30mm **75146** **0,99**
- ③ Close windows when heating is on Dims. approx. W50 x H25mm **75145** **0,99**
- ④ Check roof lock Dims. approx. W53 x H30mm **99565** **1,20**
- ⑤ Only gasoline Dims. approx. W50 x H50mm **600921** **1,50**
- ⑥ Drinking water info sign **60090** **0,99**
- ⑦ Diesel Dims. approx. W90 x H30mm **60092** **0,99**



Blind spot warning sign

The warning sign is mandatory for motorhomes, caravans and trailers over 3.5t in France since 2021. 3 stickers are required per vehicle.

Self-adhesive, Dims.: 25 x 17cm **46383** **3,95**
Magnetic Dims.: 24.8 x 17cm **46385** **5,50**



For further information signs and warning stickers please scan the QR code.





High visibility vest orange for Italy Vest according to EU DIN standard EN 471. Universal size.
471281 4,50



Yellow safety vest for Spain + Portugal Color also approved in Italy. Otherwise like 471281.
471282 4,50



Safety vest family set 4 pieces, 1 x XXL, 1 x XL (EN ISO 20471: 2013), 2 x Universal (EN 1150: 1999) including practical protective bag.
471285 11,95

Fire extinguisher

① **Fire extinguisher 1kg**
With pressure gauge, fire extinguishing powder: ABC. With wall bracket. Tested according to DIN-EN3, ideal for vans.
47154 24,90

② **Fire extinguisher 2kg**
With pressure gauge, fire extinguishing powder: ABC. With wall bracket. Tested according to DIN-EN3. Ideal for caravans and motorhomes.
471540 34,95

③ **Fire extinguisher 6kg**
w/ pressure gauge & hose, extinguishing powder: ABC. With wall bracket. Tested according to DIN-EN3. Ideal for permanent campers.
471541 59,-



Innovative fire protection

- Maintenance-free
- Easy operation
- Glows in the dark

Intuitive to operate in case of fire. Tested according to EN 3-7. Extinguishes for approx. 35 sec. Extinguishing agent 99.5% biodegradable & environmentally friendly.

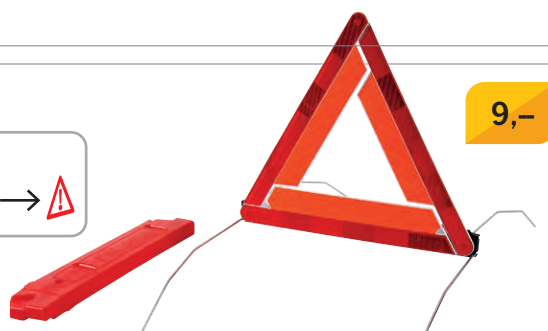
Fire classes:
5A: Wood, paper, textiles, etc.
21B: Gasoline, diesel, wax, etc.
5F: Frying oil, frying fat, etc.
Suitable for electrical equipment up to 1000V & 2l bio-ethanol gel fires.

Suitable holder Robust plastic bracket for mounting on wall or in vehicle
471544 14,60



Warning triangle

Ready for use in just a few seconds and quickly folded again to save space. Approved throughout Europe. High stability due to long metal feet. Stowed in convenient storage box.
47128 9,-



9,-



Incl. reflectors

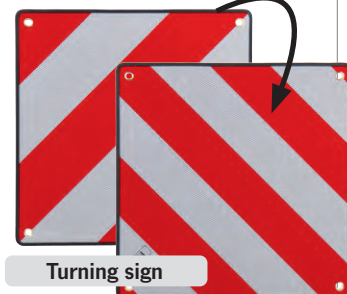
Plastic warning sign 50 x 50cm
Lightweight plastic version with four reflectors. Area not reflecting. For protruding loads. Mandatory in many European countries. Not approved for Italy and Spain.
47116 12,80



Aluminum warning sign for Spain
For bike racks and extra long loads. Three stripes. Reflective surface. 50 x 50cm Easy to attach.
471171 29,90



Aluminum warning sign for Italy
For bike racks and extra long loads. Five stripes. Reflective surface. Easy to install. 50 x 50 cm.
47117 33,80



Turning sign



Aluminum reversible warning sign for Spain & Italy
For bicycle carriers & extra-long loads. Reflective surface. Easy to install. Material: aluminum, 50 x 50 cm.
471174 41,95