





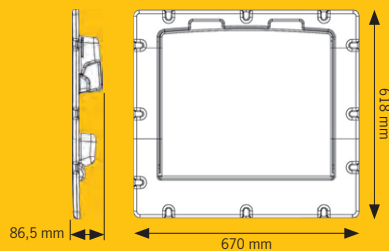
# INTERIOR CONVERSION

## Rear door interior panels for Fiat Ducato, Peugeot Boxer, Citroën Jumper >2014

### Display table

Panel with display table, material: ABS+ASA, dimensions:  
W 670 x H 618 x D 17 mm, color: grey, RAL 7035, weight  
approx. 3 kg

400297 349,-



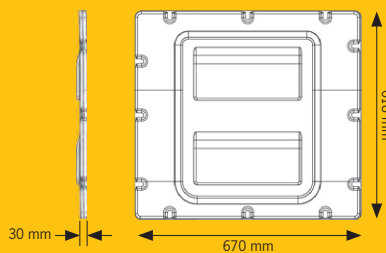
**NEW**



### Storage compartments, 2-part

Panel with 2-part elastic storage net Material: ABS+ASA, Di-  
mensions: W 670 x H 618 x D30 mm Color: grey, RAL 7035,  
Weight: approx. 2kg

400295 129,90



**NEW**



Sound insulation and insulation mats.....	638	Roller shutter doors/Pharmacist pullout .....	660
Interior cladding fabrics/panels.....	639 – 643	Swivel table frames.....	661
Furniture panels.....	644 – 645	Table tops/table sliding rails.....	662
Edge protection/Edging.....	646 – 647	Table legs, table columns and folding table legs	663
Floor panels.....	648	Lift tables.....	664 – 666
Furniture handles/Push locks.....	649 – 651	Table columns and sliding brackets .....	667
Bracket handles/Locks/Flap dampers.....	652	Lashing rails/Holding and lashing eyes.....	668 – 669
Furniture hinges.....	653 – 654	Upholstery fabrics/Automotive leather.....	670 – 671
Furniture construction components.....	655 – 656	Foams/Velcro straps/Zippers.....	672 – 673
Ventilation grates.....	657	Curtains & accessories.....	674 – 675
Drawer and heavy duty pullouts.....	658 – 659		

# VEHICLE INSULATION



EXCLUSIVE PRODUCT

**REIMO**  
TOP PRICE  
from **15,20**

Thermal conductivity value: X-Trem isolator® 0,020–0,035

# Reimo X-Trem Isolator®

- Tried and tested by REIMO for over 30 years
- X-Trem insulation does not absorb moisture
- Extremely flexible (360°), hugs the car body perfectly
- Does not squeak, has a deadening effect, resistant to most solvents and high temperatures
- Easy to process
- Made of closed-cell foamed polyethylene
- High heat insulating
- Extremely light

## X-Trem-Isolator® Classic\*, ideal for walls & roofs

Color: Black. Panel size approx. 1 x 2 m, price per panel:

Thickness 5 mm	GP* 7,60/1 qm	<b>500020</b>	<b>15,20</b>
Thickness 10 mm	GP* 7,97/1 qm	<b>50015</b>	<b>15,95</b>
Thickness 15 mm	GP* 12,47/1 qm	<b>50016</b>	<b>24,95</b>
Thickness 18 mm (ideal for floor insulation)	GP* 14,97/1 qm	<b>50009</b>	<b>29,95</b>
Thickness 20 mm	GP* 15,97/1 qm	<b>50017</b>	<b>31,95</b>
Thickness 30 mm	GP* 24,48/1 qm	<b>50018</b>	<b>48,95</b>

Roll goods approx. 20 mm thickness. Price per running meter.

1,45 m roll width (approx.)	GP* 23,41/1 sqm	<b>50022</b>	<b>33,95</b>
-----------------------------	-----------------	--------------	--------------

## X-Trem-Isolator® self-adhesive\*

• Self-adhesive for even easier installation Black color. Heat resistant up to 120°, adhesive layer covered with protective film. Plate size about 1 x 2 m, price per plate:

Thickness 10 mm,	GP* 19,70/1 sqm	<b>50000</b>	<b>39,40</b>
Thickness 20 mm	GP* 24,70/1 sqm	<b>50001</b>	<b>49,40</b>

## X-Trem-Isolator® reinforced, ideal baselayer for vehicle floors

Color: white, panel size: approx. 2.5 x 0.95 m, price per panel:

Thickness 18 mm, 90kg/cbm	GP* 50,38/1 qm	<b>50115</b>	<b>119,90</b>
---------------------------	----------------	--------------	---------------

**NEW**

## X-Trem-Isolator® Soft\*, ideal for e.g. wheel arches

- Further development of the proven X-Trem insulator
- Slip-resistant, odorless and significantly softer

Color: Black. Panel size approx. 1 x 2 m, price per panel:

Thickness 10 mm	GP* 11,25/1 sqm	<b>50095</b>	<b>22,50</b>
Thickness 20 mm	GP* 22,25/1 sqm	<b>50094</b>	<b>44,50</b>

## X-Trem-Isolator® Soft self-adhesive\*

Thickness 10 mm	GP* 21,25/1 sqm	<b>50097</b>	<b>42,50</b>
Thickness 20 mm	GP* 28,75/1 sqm	<b>50096</b>	<b>57,50</b>

Extremely easy to process (e.g. with a blade knife). The insulation does not tear, does not fray and does not fibre either.



Insulation materials in comparison	Thermal conductivity value, the smaller the better (W/M x K)	Diffusion resistance number	Price factor to PY at 40 mm
X-Trem isolator	0,020–0,035	vapor-tight	+ 4,0
polystyrene	0,025–0,040	20–300	0
polyurethane	0,025–0,035	30–100	+ 3,0
mineral fiber	0,035–0,050	1	+ 0,0–2,5
baking cork	0,045–0,055	10–20	+ 4,5–6,0

**TIP**

We recommend Super Spray Adhesive 50013 for bonding. You need approx. 1 can/panel (2 m²) - for flat bonding. Application temperature should not be below 15°C. Colors, dimensions and density of the boards may vary slightly due to production. We recommend trial bonding (without warranty).

\*Shipping only possible by forwarding agent, for panel thickness 10 - 30 mm freight/packaging  
Stacking height 10-32 cm pallet 55,99 / 8,-  
Stacking height 33-200 cm 108,99 / 8,-

Shipping from Reimo warehouse is done by forwarding company. For smaller quantities, please ask your dealer at what cost he can obtain the plates and, if necessary, ship them to you.

## Now also available as cut-to-size sets:

Insulation set for Volkswagen Transporter 6/5 Kombi kR and IR  
28 parts. 2 plates 20 mm X-Trem **50086 159,-**

Extension set for Volkswagen Transporter 6/5 panel van kR  
8 parts. 1 plate 20 mm X-Trem **500861 89,90**

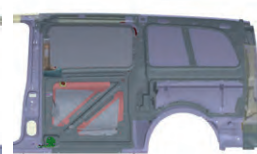
Mercedes-Benz Vito VS 20 station wagon long version (length 5.14 m)  
13 parts. 2.5 Plates 15 mm X-Trem **50087 219,-**



Tailgate



Left side



Right side

## CARBEST



Use in small strips to reduce vibration

**TIP**

from **14,50**

## X-Trem-Isolator® noise Regulator self-adhesive sound insulation

- Odorless
- Aluminum butyl, 2 mm thick, aluminum-coated
- Without bitumen, not mixed with petroleum or asphalt
- Excellent noise insulation and soundproofing
- Heat reflective
- Self-adhesive with strong surface adhesion
- Processing possible from 5°C.

Temperature resistant from -30°C to +80°C  
Adhesive layer covered with protective film.

100 x 50 cm	GP* 29,00/1 sqm	<b>50098</b>	<b>14,50</b>
500 x 40 cm	GP* 24,95/1 sqm	<b>50099</b>	<b>49,90</b>

Please wear gloves to protect yourself from the sharp-edged film during processing.

## Special adhesive for X-Trem-Isolator®



Danger  
Concerns both articles

## Power spray adhesive

Bonding on wood, metal and plastics as well as X-Trem.

① 400 ml, heat resistant up to 110°C GP* 42,37/ 1 Liter	<b>500130</b>	<b>16,95</b>
② 500 ml, heat resistant up to 80°C GP* 55,80/ 1 Liter	<b>50013</b>	<b>27,90</b>

Danger: H222, H229, H315, H336, H411



Cladding with velour fabrics



Isovelours grey

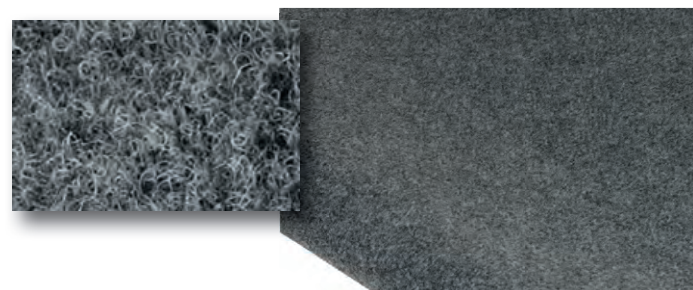
**Isovelours, back coated with foam. Beige or grey.**

Ideal as wall/roof cladding or for covering cladding panels (not recommended for kitchens due to the textile-like surface). 100% polyamide.

① Grey, thickness 2 mm, width 140 cm			
10 m	<b>510140</b>	GP* 22,50/1 sqm	<b>225,-</b>
20 m	<b>510141</b>	GP* 22,60/1 sqm	<b>452,-</b>
Beige, thickness 3 mm, width 140 cm			
10 m	<b>5100960</b>	GP* 22,50/1 sqm	<b>225,-</b>
20 m	<b>5100961</b>	GP* 23,10/1 sqm	<b>462,-</b>
② Grey, thickness 5 mm, width 160 cm			
10 m	<b>510170</b>	GP* 12,60/1 sqm	<b>126,-</b>
20 m	<b>510171</b>	GP* 12,55/1 sqm	<b>251,-</b>

**Isovelours, back additionally coated with non-woven fabric,**  
i.e. adhesive does not visibly penetrate the front side so quickly. 100% polyamide.

Grey, thickness 3 mm, width 155 cm			
10 m	<b>510160</b>	GP* 32,40/1 sqm	<b>324,-</b>
20 m	<b>510161</b>	GP* 32,30/1 sqm	<b>646,-</b>



Intervelours

**Intervelours graphite**

3 mm thick flexible needled fleece for gluing or covering vehicle parts. Wrinkle-resistant, insensitive. Graphite decor

50 x 1,91 m	<b>51020</b>	GP* 14,71/1 sqm	<b>1405,-</b>
5 x 1,91 m	<b>510201</b>	GP* 16,26/1 sqm	<b>155,30</b>



Wheel arch trim with Intervelours

GP\* = Base price per specified unit

**Trinity – interior cladding fabric in a sophisticated quilted look**

- Velvety fabric, nice feel
- With embossed quilted look
- Reduced moisture absorption
- Flame-retardant finish

Material: 100 % polyester, weight: 355g/m (+/- 5 %), usable width approx. 142 cm

Beige color

10 m	<b>510370</b>	GP* 12,90/1 sqm	<b>129,-</b>
20 m	<b>510371</b>	GP* 12,95/1 sqm	<b>259,-</b>

Color grey

10 m	<b>510380</b>	GP* 13,30/1 sqm	<b>133,-</b>
20 m	<b>510381</b>	GP* 13,25/1 sqm	<b>265,-</b>

Color black

10 m	<b>510390</b>	GP* 13,30/1 sqm	<b>133,-</b>
20 m	<b>510391</b>	GP* 13,25/1 sqm	<b>265,-</b>



**Fancy – interior cladding fabric**

- Anthracite with 4 mm foam and tricot
- Weight 470g/m<sup>2</sup> +/- 5%
- Material: approx.: 58% polyester, 27% various fabrics for flame protection; 15% polyurethane
- Water repellent
- Usable width min. 140 cm

10 m	GP* 11,60/1 sqm	<b>510250</b>	<b>116,-</b>
20 m	GP* 11,75/1 sqm	<b>510251</b>	<b>235,-</b>



**Cladding with artificial leather**

Light grey artificial leather, grained, soft artificial leather for covering vehicle parts. Material: 53% polyurethane, 32% polyester, 15% cotton. Unlaminated, width approx. 140 cm.

5 m	GP* 29,40/1 sqm	<b>5102110</b>	<b>147,-</b>
20 m	GP* 27,85/1 sqm	<b>5102111</b>	<b>557,-</b>



**Backing laminated with 3 mm foam (Chameuse), width approx. 140 cm.**

5 m	GP* 49,80/1 sqm	<b>5102112</b>	<b>249,-</b>
20 m	GP* 48,90/1 sqm	<b>5102113</b>	<b>978,-</b>

GP\* = base price per specified unit

**Tips and tricks for vehicle insulation and interior cladding**



**Preparation:**

Your vehicle is ready for you to begin the first steps of the insulation process. Interior claddings have been dismantled, cut-outs for later installations such as windows, sockets etc. have been made. The sides of your vehicle must be clean, dry and free from grease.

**Insulation:**

We recommend our X-Trem insulator for insulation. Advantages over other insulation materials: it is excellent to cut with a sharp knife. It is also flexible and can be easily adapted to the curves of the vehicle body. Other advantages: very high insulation even at low material thicknesses (saves space and weight), closed-pored (cannot absorb water) and also flame retardant from 15 mm thickness.

First, cut a few pieces of the X-Trem insulator to the desired size. Keep in mind that if the surface is difficult to access, the insulation piece including the adhesive will have to be attached later. Now paint the cut parts of the X-Trem insulator with single-component adhesive (Art. No. 50036) using a brush or a fine toothed spatula. Then apply the adhesive to the sidewall or ceiling with a brush.

Both surfaces must always be coated. Furthermore, the bonding must be flat so that there is no air between the vehicle sheet and the X-Trem insulator. This shifts the dew point into the insulation and thus prevents condensation. Once the adhesive has been applied, the X-Trem insulator is fitted after a drying time.

Firmly press on the X-Trem insulator at all points, as it is not the duration of the contact pressure that is decisive for the adhesive strength, but the amount of contact pressure. Proceed with the wall and ceiling in the same way. When using the X-Trem insulator on the floor, the X-Trem insulator is not glued, but only placed under the floor plate.

If you follow this advice, you will have a cooler vehicle in the summer and a warmer one in the winter, as the principle for insulation is: a lot helps a lot!!!!

**Interior cladding**

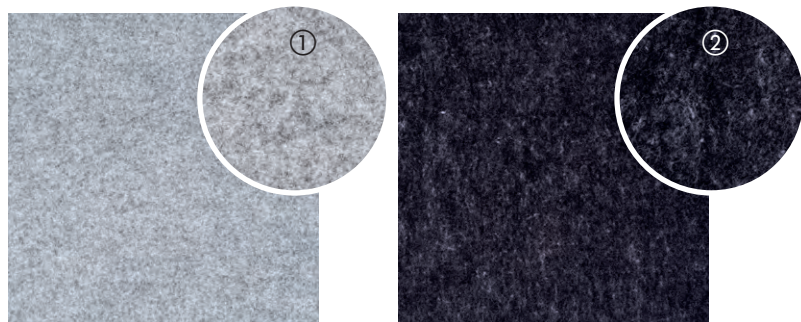
The purpose of the interior cladding is to cover the jagged vehicle bodywork on the inside in a way that creates a cozy atmosphere in the vehicle and

at the same time conceals the insulation material between the vehicle sheet metal and the interior cladding. The cladding material must therefore be able to adapt well to the curvature of the car body.

More info: [www.reimo.com](http://www.reimo.com)



# INTERIOR CLADDING PANELS/FABRICS



## V-Flex plate

- Sound-absorbing and breathable
- Light, pleasant feel
- Can be cut to size
- Flexible

The wood-free alternative to previously used plywood panels in interior construction. Special polyester fibers form the base material and prevent rotting.

V-FLEX is breathable and can absorb and release moisture. The material is very light and also absorbs sound.

Areas of application: e.g. wall cladding, ceiling cladding, lining of e.g. storage spaces, rear garages.

Dimensions: 2.440 x 1.300 x 2,7 mm, 950g/sqm

① Color grey	51044	49,90
② Color anthracite	51045	54,90



## Sliding & rear door panels suitable for Fiat Ducato type 250 (>YOC 2006 until today)

- Preformed polyester felt modules
- Requirements: medium roof height (LH2 ) and rear doors without standard windows (complete sheet metal doors)

### Tailgate cladding - 2-piece set

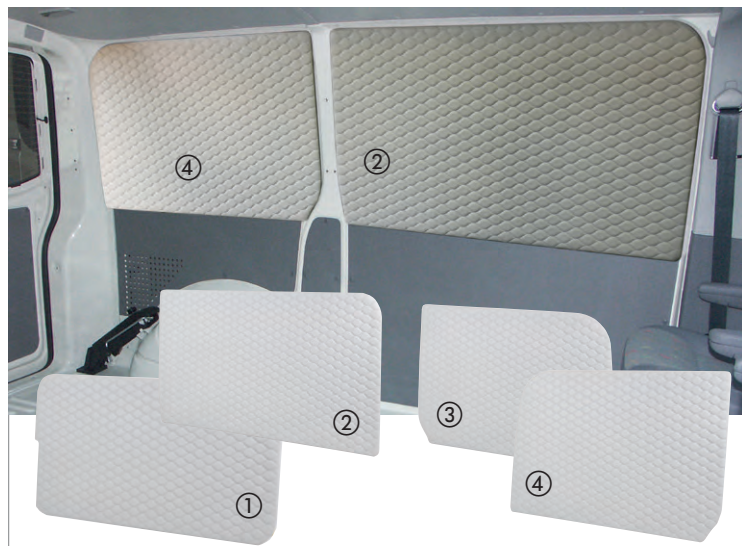
Dimensions: 1125 x 785 x 120 mm

③ Color anthracite	51046	225,-
Color grey	510460	225,-

### Sliding door cladding Ducato

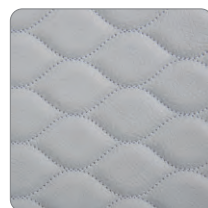
Dimensions: 1.260 x 1.053 x 99,9 mm

Color anthracite	51047	177,-
④ Color grey	510470	177,-



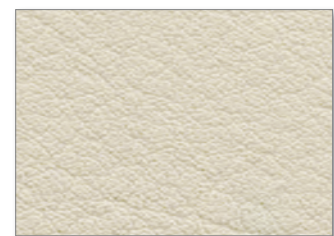
## Quilted interior cladding for Volkswagen Transporter 6/5 buses without windows

- Cozy ambience in the Volkswagen Transporter 6/5 without windows
- Chic artificial leather look with quilting
- Mounting material included



Easy to attach with dowels in the existing holes on Volkswagen Transporter 6/5 (without glazing) or with Velcro. Mounting material included in delivery. The material is color coordinated with the VW interior colors.

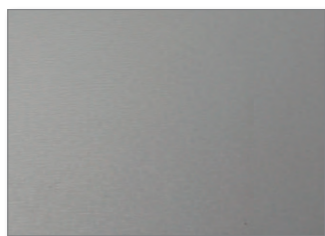
① 1 x panel for sliding door	32000	149,-
② 1 x panel for side opposite sliding door	32001	155,-
③ 1 x panel for rear right side window	32002	149,-
④ 1 x panels for rear left side window	32003	149,-



### Galloway leather grain

Plywood board approx. 3 mm with elegant decor, can be disposed of in an environmentally friendly way. Color: Warm beige size 1,22 x 2,50 m

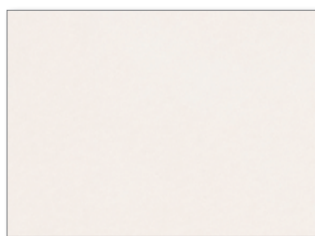
**510071 74,95**  
GP\* 24,57 / 1 sqm



### Flexaform Struktura

Dimensionally stable special fiberboard with matte grey surface, can be disposed of in an environmentally friendly manner. More suitable for vehicles than poplar plywood. Color: Pearl grey. Size 1,22 x 2,44 m

**51010 38,90**  
GP\* 13,07 / 1 sqm



### Hybrid decor

Flexible plywood board, coated on one side, approx. 3 mm with insensitive textured surface, washable. Can be disposed of in an environmentally friendly way. Color: Rose-beige. Size 1,22 x 2,44 m

**51012 64,95**  
GP\* 21,82 / 1 sqm

## Special 3 mm panels for interior cladding

- Good looks
- Robust quality
- Easy care

The purpose of the interior cladding is to cover the rugged vehicle bodywork on the inside in a way that creates a homey atmosphere in the vehicle and at the same time conceals the insulation material between the vehicle sheet metal and the interior cladding. The cladding material must therefore be able to adapt well to the curvature of the body.



# X-Trem® Stretch Carpet Felt

## Easy-Trim, easy to lay

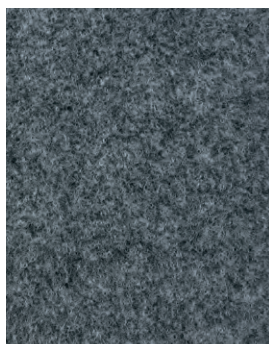
- Popular type for vehicle cladding
- Simple processing, therefore perfect for self-assembly
- 4-way / super stretchy (4-Way Superstretch)
- Available in 5 different colors
- Suitable for all surfaces (wood, plastic, metal and also on insulation)
- Insulate (acoustics) and beautify the vehicle interior
- Due to the special stretching ability, even curves such as wheel arches are no problem



Beige



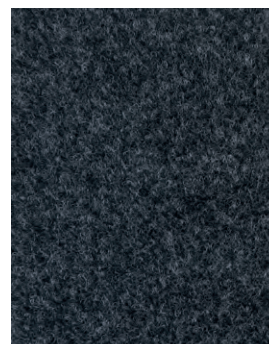
Silver grey



Dark grey



Slate



Anthracite

### X-Trem® Stretch Carpet felt

- Highly flexible needle felt velour
- Thickness approx. 4,6 mm,
- Weight approx. 390 gr/sqm.
- Material: 100% polyester

Color	Roll W 2 x L 2 m (4 m <sup>2</sup> )		Cut to size W 2 x L 5 m (10 m <sup>2</sup> )		Roll W 2 x L 30 m (60 m <sup>2</sup> )	
Beige	500891	79,- GP* 19,75/sqm	500890	145,- GP* 14,50/sqm	50089	579,- GP* 9,65/sqm
Silver grey	500831	75,60 GP* 18,90/sqm	500830	139,- GP* 13,90/qm	50083	612,- GP* 10,20/qm
Dark grey	500841	75,60 GP* 18,90/qm	500840	139,- GP* 13,90/qm	50084	612,- GP* 10,20/qm
Slate	500851	79,- GP* 19,75/qm	500850	145,- GP* 14,50/qm	50085	579,- GP* 9,65/qm
Anthracite	500881	75,60 GP* 18,90/qm	500880	139,- GP* 13,90/qm	50088	612,- GP* 10,20/qm

### Self-adhesive Super Stretch Carpet felt

Thickness 3 mm, weight approx. 365 gr/sqm. 100% Polypropylene

**Dark grey**, roll W 1,4 x L 60 m  
50092 709,-  
GP\* 8,44/ 1 sqm

**Dark grey**, cut to size W 1,4 x L 5 m  
500920 114,-  
GP\* 16,29/ 1 sqm

**Beige**, roll W 1,4 x L 60 m  
500922 659,-  
GP\* 7,85/ 1 sqm

**Beige**, cut to size W 1,4 x L 5 m  
500923 95,90  
GP\* 13,70/ 1 sqm



GP\* = Base price per specified unit

### Plastic wedge set, 5 pcs.

Ideal for removing cladding parts, decorative strips, etc. without damaging the paintwork. Practical combination of different wedge and lever variants. Robust special plastic.

50093 37,50

**Power spray adhesive Plus**  
For X-Trem® Insulator & fabrics, heat-resistant up to 110°C. Adheres to wood, metal and plastics. 400 ml

500130 16,95

GP \* 42,37/ 1 liter

Danger: H222, H229, H315, H336, H411



Danger

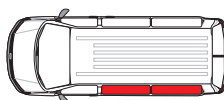




Note: For Ducato/Boxer/Jumper/Movano also available in white high gloss.

## Cover Plus ABS interior cladding panels - the simple construction alternative to wood or fabric

- Cladding panels adapted to the shape of the load compartment walls.
- Panel thickness: 3-5mm
- Quick and easy installation
- Fastening with Easyfix tape, sealing with waterproof and food-safe sealant
- Food-safe sealant
- Ideally suited for the installation of wet rooms
- No interference with the load-bearing parts of the vehicle
- No TÜV approval necessary
- Maintenance of rear lights & vehicle parts possible without restriction
- Total load use and load volume remain the same
- Waterproof and disinfectant resistant
- Elegant interior design thanks to glossy white or grey textured ABS



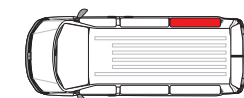
### ① Interior cladding left side, 2-part

Vehicle type	Wheelbase/Length (mm)	Height (mm)	Color	Weight	Art. no	Price
Fiat Ducato, Peugeot Boxer, Citroën Jumper, >2006, Opel Movano >2021	L2	H2	white	15,0 kg	<b>400210</b>	<b>625,25</b>
	L2	H2	grey	18,7 kg	<b>400236</b>	<b>891,50</b>
	L3	H2	white	17,0 kg	<b>400215</b>	<b>664,-</b>
	L3	H2	grey	21,2 kg	<b>400242</b>	<b>962,-</b>
	L3	H3	white	24,3 kg	<b>400220</b>	<b>738,-</b>
Ford Custom >2013	2555	1405	grey	10,5 kg	<b>400277</b>	<b>659,-</b>
	2922	1405	grey	16,0 kg	<b>400282</b>	<b>695,-</b>

Vehicle type	Wheelbase/Length (mm)	Height (mm)	Color	Weight	Art. no	Price
MB Sprinter FWD	3924	H2	grey	21,2 kg	<b>400256</b>	<b>923,-</b>
from 2018 RWD	3665	H2	grey	20,6 kg	<b>400261</b>	<b>923,-</b>
Peugeot Expert/Citroën Jumpy, >2016	2512	1390	grey	9,6 kg	<b>400247</b>	<b>729,-</b>
VW T6.1 >2018	2543	1410	grey	9,8 kg	<b>400266</b>	<b>712,-</b>
	2943	1410	grey	11,3 kg	<b>400272</b>	<b>745,-</b>

### ② Interior cladding right side, 1 piece

Vehicle type	Wheelbase/Length (mm)	Height (mm)	Color	Weight	Art. no	Price
Fiat Ducato, Peugeot Boxer, Citroën Jumper, >2006, Opel Movano >2006	L2	H2	grey	9,4 kg	<b>400237</b>	<b>495,95</b>
	L3	H2	white	9,7 kg	<b>400216</b>	<b>365,-</b>
	L3	H2	grey	12,0 kg	<b>400243</b>	<b>562,-</b>
	L3	H3	white	12,4 kg	<b>400221</b>	<b>484,50</b>
Ford Custom >2013	2555	1405	grey	5,7 kg	<b>400278</b>	<b>366,-</b>
	2922	1405	grey	7,0 kg	<b>400283</b>	<b>399,-</b>



Vehicle type	Wheelbase/Length (mm)	Height (mm)	Color	Weight	Art. no	Price
MB Sprinter >2018 FWD	3924	H2	grey	10,7 kg	<b>400257</b>	<b>534,-</b>
Peugeot Expert/Citroën Jumpy, >2016	2512	1390	grey	5,6 kg	<b>400248</b>	<b>448,-</b>
	2862	1390	grey	6,3 kg	<b>400253</b>	<b>475,-</b>
VW T6.1 >2018	2543	1410	grey	5,8 kg	<b>400267</b>	<b>439,-</b>

### ③ Interior cladding right sliding door, 1 piece

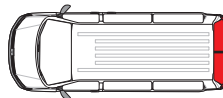
Vehicle type	Wheelbase/Length (mm)	Height (mm)	Color	Weight	Art. no	Price
Fiat Ducato, Peugeot Boxer, Citroën Jumper, >2006, Opel Movano >2006	L2	H2	white	6,3 kg	<b>400212</b>	<b>349,50</b>
	L2	H2	grey	8,0 kg	<b>400238</b>	<b>439,95</b>
	L3	H2	white	6,3 kg	<b>400217</b>	<b>314,-</b>
	L3	H2	grey	8,0 kg	<b>400238</b>	<b>439,95</b>
	L3	H3	white	6,3 kg	<b>400222</b>	<b>347,50</b>
Ford Custom >2013	2555	1405	grey	4,7 kg	<b>400279</b>	<b>355,-</b>
	2922	1405	grey	4,7 kg	<b>400279</b>	<b>355,-</b>



Vehicle type	Wheelbase/Length (mm)	Height (mm)	Color	Weight	Art. no	Price
Peugeot Expert/Citroën Jumpy, >2016	2512	1390	grey	4,0 kg	<b>400249</b>	<b>311,99</b>
	2862	1390	grey	4,0 kg	<b>400249</b>	<b>311,99</b>
VW Crafter >2017	3450	1961	grey	9,4 kg	<b>400286</b>	<b>432,-</b>
VW T6.1 >2018	2543	1410	grey	4,1 kg	<b>400268</b>	<b>334,-</b>



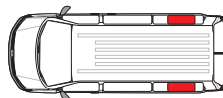
## ④ Interior cladding right + left tailgate, 2-piece



Vehicle type	Wheelbase/Length (mm)	Height (mm)	Color	Weight	Art. no	Price
Fiat Ducato, Peugeot Boxer, Citroën Jumper, >2006, Opel Movano >2006	L2	H2	white	7,0 kg	400213	417,-
	L2	H2	grey	8,7 kg	400239	599,-
	L3	H2	white	7,0 kg	400218	417,-
	L3	H2	grey	8,7 kg	400239	599,-
Ford Custom >2013	2555	1405	grey	6,3 kg	400280	555,-
	2922	1405	grey	6,3 kg	400280	555,-

Vehicle type	Wheelbase/Length (mm)	Height (mm)	Color	Weight	Art. no	Price
MB Sprinter >2018	FWD 3924	H2	grey	9,7 kg	400259	594,-
	RWD 3665	H2	grey	9,6 kg	400264	594,-
VW T6.1 >2018	2543	1410	grey	5,3 kg	400269	518,99

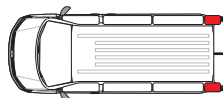
## ⑤ Interior cladding right + left wheel arch, 2-piece



Vehicle type	Wheelbase/Length (mm)	Height (mm)	Color	Weight	Art. no	Price
Fiat Ducato, Peugeot Boxer, Citroën Jumper, >2006, Opel Movano >2006	L2	H2	white	3,5 kg	400204	147,-
	L2	H2	grey	3,5 kg	400240	174,-
	L3	H2	white	3,5 kg	400204	147,-
	L3	H2	grey	3,5 kg	400240	174,-
	L3	H3	white	3,5 kg	400204	147,-
Ford Custom >2013	2555	1405	grey	2,7 kg	400281	166,-
	2922	1405	grey	2,7 kg	400281	166,-

Vehicle type	Wheelbase/Length (mm)	Height (mm)	Color	Weight	Art. no	Price
MB Sprinter >2018	FWD 3924	H2	grey	3,5 kg	400260	172,-
	RWD 3665	H2	grey	3,5 kg	400265	172,-
Peugeot Expert/Citroën Jumpy, >2016	2862	1390	grey	3,5 kg	400255	172,-
VW T6.1 >2018	2543	1410	grey	3,5 kg	400270	172,-

## ⑥ Interior cladding right + left rear pillar, 2-piece



Vehicle type	Wheelbase/Length (mm)	Height (mm)	Color	Weight	Art. no	Price
Fiat Ducato, Peugeot Boxer, Citroën Jumper, >2006, Opel Movano >2006	L2	H2	grey	1,0 kg	400241	285,-
	L3	H2	grey	1,0 kg	400241	285,-

Vehicle type	Wheelbase/Length (mm)	Height (mm)	Color	Weight	Art. no	Price
Peugeot Expert/Citroën Jumpy, >2016	2512	1390	grey	1,0 kg	400251	175,-
	2862	1390	grey	1,0 kg	400251	175,-
VW T6.1 >2018	2543	1410	grey	1,0 kg	400271	168,94
	2943	1410	grey	1,0 kg	400271	168,94

## Hecktür-Innenverkleidungen für Fiat Ducato, Peugeot Boxer, Citroën Jumper >2014

**Display table**  
Panel with stand-up table, material: ABS+ASA, dimensions: W 670 x H 618 x D 17 mm, color: grey, RAL 7035, weight approx. 3 kg  
**400297 349,-**

**Storage compartment, closed**  
Panel with storage compartment, material: ABS+ASA, dimensions: W 670 x H 618 x D 108 mm, color: grey, RAL 7035, weight: approx. 2,3 kg  
**400296 179,-**

**2-piece storage compartment, incl. net**  
Panel with elastic storage net, material: ABS+ASA, dimensions: W 670 x H 617 x D 17 mm, color: grey, RAL 7035, weight approx. 2 kg  
**400298 129,90**

**Storage compartments, 2-piece, separate with mesh**  
Panel with 2-part elastic storage net, material: ABS+ASA, dimensions: W 670 x H 618 x D 30 mm, color: grey, RAL 7035, approx. 2 kg  
**400295 129,90**



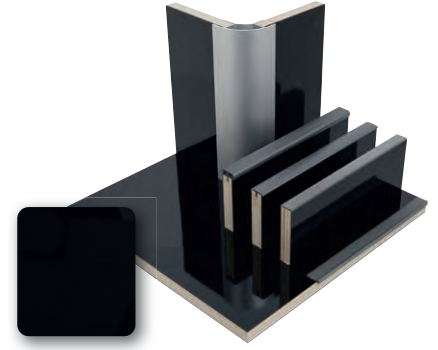
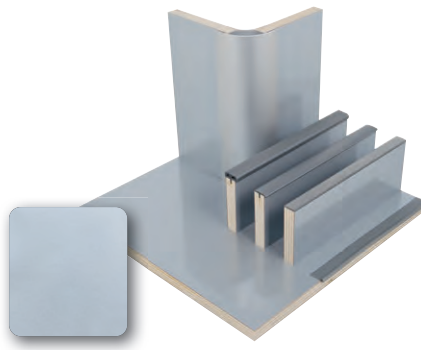
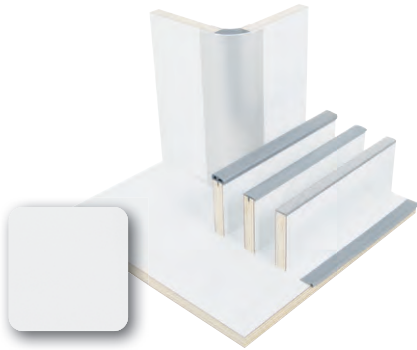
# LIGHTWEIGHT FURNITURE PANELS FOR MOTORHOMES

## Poplar plywood with laminate or HPL laminate surface

- Extremely light - approx. 7,2 kg/m<sup>2</sup>
- Very stable with 0,6 mm coating
- Pressure and scratch resistant
- Easy-care surface, long durability

- Panel thickness approx. 15 mm
- Panel size approx. 122 x 244 cm / approx. 2,98 sqm
- Strong special coating in HPL quality
- Particularly high surface quality

Also available as 1/4 plate



### "High gloss white" HPL laminate

Weight whole plate: approx. 25 kg  
 Whole plate (122 x 244 cm) **52025 249,-**  
GP\* 83,64/1 sqm  
 1/4 plate (60 x 120 cm) **520260 63,95**  
GP\* 85,84/1 sqm

**Corner connection profile 90°** as a connection to the wooden plate. Both sides open.  
 Aluminum, length 220 cm **522141 68,90**  
GP\* 31,32/1 m

### "High-gloss silver" HPL laminate

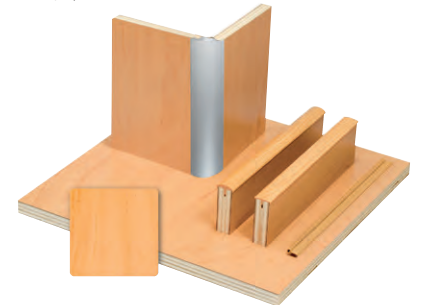
Weight whole plate: approx. 25 kg  
 Whole plate (122 x 244 cm) **520252 299,-**  
GP\* 100,44/1 sqm  
 1/4 plate (60 x 120 cm) **520261 78,95**  
GP\* 105,97/1 sqm

**Corner connection profile 90°** as a connection to the wooden plate. Both sides open.  
 Aluminum, length 220 cm **522141 68,90**  
GP\* 31,32/1 m

### "High gloss black" HPL laminate

Weight whole plate: approx. 24,5 kg  
 Whole plate (122 x 244 cm) **520251 301,-**  
GP\* 101,11/1 sqm  
 1/4 plate (60 x 120 cm) **520262 71,95**  
GP\* 96,58/1 sqm

**Corner connection profile 90°** as a connection to the wooden plate. Both sides open.  
 Aluminum, length 220 cm **522141 68,90**  
GP\* 31,32/1 m



### "High gloss olive" HPL laminate

Weight whole plate: approx. 24,0 kg  
 Whole plate (122 x 244 cm) **52019 284,-**  
GP\* 95,40/1 sqm  
 1/4 plate (60 x 120 cm) **520191 74,95**  
GP\* 100,60/1 sqm

**Corner connection profile 90°** as a connection to the wooden plate. Both sides open.  
 Aluminum, length 220 cm **522141 68,90**  
GP\* 31,32/1 m

### "Cherry" HPL laminate

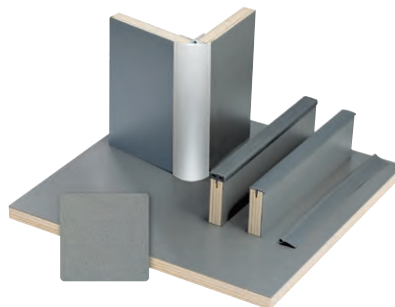
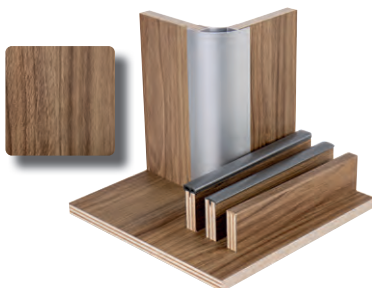
Weight whole plate: approx. 23,5 kg  
 Whole plate (122 x 244 cm) **52016 259,-**  
GP\* 87,00/1 sqm  
 1/4 plate (60 x 120 cm) **520161 65,95**  
GP\* 88,52/1 sqm

**Corner connection profile 90°** as a connection to the wooden plate. Both sides open.  
 Aluminum, length 220 cm **522141 68,90**  
GP\* 31,32/1 m

### "Apple" HPL laminate

Weight per plate: approx. 23,0 kg  
 Whole plate (122 x 244 cm) **52012 262,-**  
GP\* 88,01/1 sqm  
 1/4 plate (60 x 120 cm) **520121 69,95**  
GP\* 93,89/1 sqm

**Corner connection profile 90°** as a connection to the wooden plate. Both sides open.  
 Aluminum, length 220 cm **522141 68,90**  
GP\* 31,32/1 m



### "Catania Oak" HPL laminate

Weight per panel: approx. 23 kg  
 Whole plate (122 x 244 cm) **52056 279,90**  
GP\* 94,02/1 sqm  
 1/4 plate (60 x 122 cm) **520561 72,95**  
GP\* 97,92/1 sqm

**Corner connection profile 90°** as a connection to the wooden plate. Both sides open.  
 Aluminum, length 220 cm **522141 68,90**  
GP\* 31,32/1 m

### "Anthracite-metallic" laminate

Weight per panel: approx. 24,0 kg  
 Whole plate (122 x 244 cm) **520151 246,-**  
GP\* 82,63/1 sqm  
 1/4 plate (60 x 122 cm) **520152 64,95**  
GP\* 87,18/1 sqm

**Corner connection profile 90°** as a connection to the wooden plate. Both sides open. Aluminum, length 220 cm **522141 68,90**  
GP\* 31,32/1 m

### "Granitto" HPL laminate

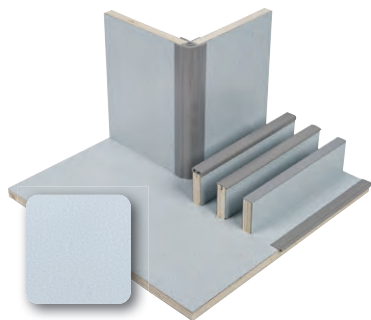
Weight per plate: approx. 23,5 kg  
 Whole plate (122 x 244 cm) **52007 234,-**  
GP\* 78,60/1 sqm  
 1/4 plate (60 x 120 cm) **520071 62,95**  
GP\* 84,50/1 sqm

**Corner connection profile 90°** as a connection to the wooden plate. Both sides open. Aluminum, length 220 cm **522141 68,90**  
GP\* 31,32/1 m



## Poplar plywood with HPL laminate surface - REIMO Eco series

E05 standard - Our furniture boards meet the stricter limits for formaldehyde emissions from wooden materials in Germany.

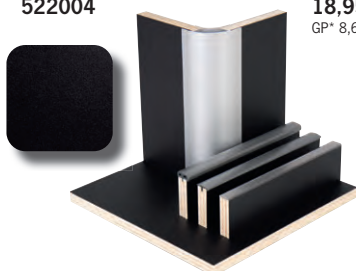


### "Pure Graffiti" matt HPL laminate

Weight whole plate: approx. 26,5 kg  
 Whole plate (122 x 244 cm) **52091 119,-**  
 GP\* 39,97/1 sqm  
 1/4 plate (60 x 122 cm) **520911 29,85**  
 GP\* 40,07/1 sqm

**Corner connection profile 90°** as a connection to the wooden plate. PVC, length 220 cm

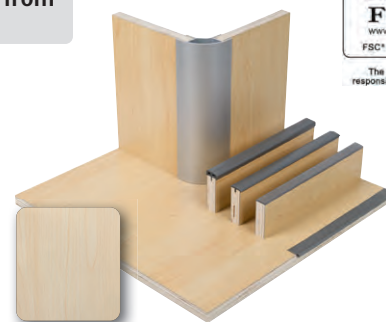
**522004 18,95**  
 GP\* 8,61/1 m



### "Mother of pearl" glossy HPL laminate

Weight per plate: approx. 26 kg  
 Whole plate (122 x 244 cm) **52090 139,-**  
 GP\* 46,69/1 sqm  
 1/4 plate (60 x 122 cm) **520901 35,-**  
 GP\* 46,9846,98/1 sqm

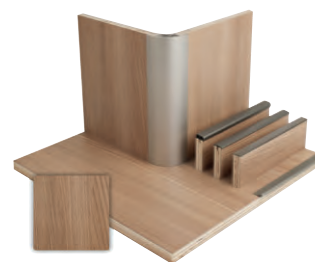
**Corner connection profile 90°** as a connection to the wooden plate. Both sides open. Aluminum, length 220 cm **522141 68,90**  
 GP\* 31,32/1 m



### "Maple" matt HPL laminate

Weight per plate: approx. 26 kg  
 Whole plate (122 x 244 cm) **52092 124,-**  
 GP\* 41,65/1 sqm  
 1/4 plate (60 x 122 cm) **520921 35,95**  
 GP\* 48,26/1 sqm

**Corner connection profile 90°** as a connection to the wooden plate. Both sides open. Aluminum, length 220 cm **522141 68,90**  
 GP\* 31,32/1 m

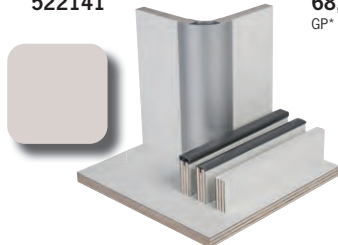


### "Matte Black" HPL laminate

Whole plate (122 x 244 cm) **52096 302,-**  
 GP\* 101,44/1 sqm

**Corner connection profile 90°** as a connection to the wooden plate. PVC, length 220 cm

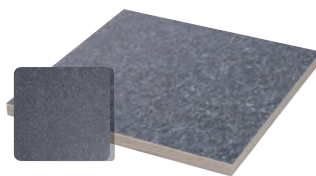
**522141 68,90**  
 GP\* 31,32/1 m



### "Pearl" Metallic poplar plywood

Coated on both sides. Weight per plate: approx. 25 kg Plate thickness approx. 15 mm  
 Whole plate (122 x 244 cm) **52073 363,-**  
 GP\* 121,93/1 sqm

**Corner connection profile 90°**. Both sides open. Aluminum, length 220 cm **522141 68,90**  
 GP\* 31,32/1 m



### "Olmo" HPL laminate

Weight per plate: approx. 23,0 kg Plate thickness approx. 15 mm  
 Whole plate (122 x 244 cm) **52048 260,-**  
 GP\* 87,34/1 sqm  
 1/4 plate (60 x 122 cm) **520481 66,50**  
 GP\* 89,26/1 sqm

**Corner connection profile 90°**. Both sides open. Aluminum, length 220 cm **522141 68,90**  
 GP\* 31,32/1 m



### "Warm white matte" HPL laminate

Weight per plate: approx. 23,0 kg  
 Whole plate (122 x 244 cm) **52057 260,-**  
 GP\* 87,34/1 sqm  
 1/4 plate (60 x 120 cm) **520570 72,95**  
 GP\* 97,92/1 sqm

**Corner connection profile 90°** as a connection to the wooden plate. Both sides open. Aluminum, length 220 cm **522141 68,90**  
 GP\* 31,32/1 m



### "Basalt" poplar laminate

Plate thickness: approx. 15 mm  
 Whole plate (122 x 244 cm) **520257 266,-**  
 GP\* 89,35/1 sqm



### Poplar laminate light grey

Weight per plate: approx. 23,5 kg  
 Plate thickness: approx. 15 mm  
 Whole plate (122 x 244 cm) **52010 211,-**  
 GP\* 70,88/1 sqm

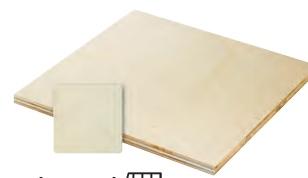
### Poplar plywood light grey

Weight per plate: approx. 19,5 kg, plate thickness: approx. 15 mm.  
 Whole plate (137 x 200 cm) **52001 369,-**  
 GP\* 134,67/1 sqm

**ATTENTION! Different plate size**

### Natural plywood

Untreated, environmentally friendly in production and disposal, breathable, easy to work with.  
 Weight per plate: approx. 30 kg  
 Plate thickness: approx. 18 mm  
 Whole plate (122 x 244 cm) **52030 144,-**  
 GP\* 48,37/1 sqm



### Poplar plywood natural

Weight per plate: approx. 17,0 kg  
 Plate thickness: approx. 14/15 mm  
 Whole plate (122 x 244 cm) **52000 88,95**  
 GP\* 29,88/1 sqm

#### SHIPPING OF WOODEN PLATES:

1/4 plates (60 x 120 cm) can be shipped without bulky goods surcharges. The shipping costs remain favorable. Whole plates (122 x 244 cm) are shipped by a forwarding agent from a minimum order quantity of 2 pieces (also mixed). This will incur increased shipping costs. It is easier and cheaper to collect whole boards from a specialist dealer. The edges of the furniture boards may show slight imperfections on delivery as a result of shipping. In this case, the customer will have to expect cutoffs on the edges in order to repair the furniture edges.

GP\* = Base price per specified unit

All dimensions are approximate

= Please ask your specialist dealer for freight costs



# EDGING, PROFILES, HINGES

- The tried and tested furniture system for self-builders
- With rounded, padded edges
- Protects the wooden edge, high stability
- Material: PVC
- Is hammered into the milled groove

**Padded edging 15 mm** Air-cushioned edge protection profile with nose on one side.

<b>Silver</b>			
5 m	GP* 6,70/1 m	<b>5210779</b>	<b>33,50</b>
25 m	GP* 6,16/1 m	<b>5210778</b>	<b>154,-</b>
<b>Dark grey</b>			
5 m	GP* 5,59/1 m	<b>5210719</b>	<b>27,95</b>
25 m	GP* 4,96/1 m	<b>5210718</b>	<b>124,-</b>
<b>Medium grey</b>			
5 m	GP* 6,16/1 m	<b>5210749</b>	<b>30,80</b>
25 m	GP* 5,48/1 m	<b>5210748</b>	<b>137,-</b>



**Padded door edging 15 mm** for semi-suspended doors such as furniture system Classic. This means no wood waste when building doors and flaps.

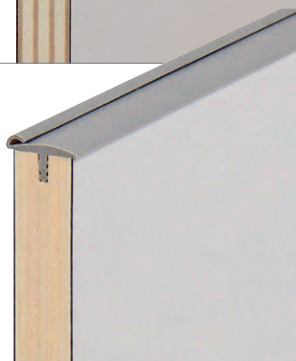
<b>Dark grey</b>			
5 m	GP* 8,50/1 m	<b>5210519</b>	<b>42,50</b>
25 m	GP* 7,76/1 m	<b>5210518</b>	<b>194,-</b>
<b>Medium grey</b>			
5 m	GP* 8,44/1 m	<b>5210549</b>	<b>42,20</b>
25 m	GP* 7,96/1 m	<b>5210548</b>	<b>199,-</b>



**Door inner edging with sealing lip**

for the door cutout

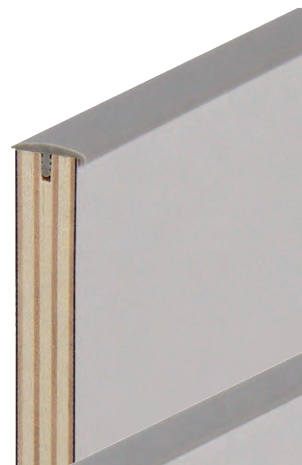
<b>Medium grey</b>			
5 m	GP* 3,79/1 m	<b>5210349</b>	<b>18,95</b>
40 m	GP* 4,17/1 m	<b>5210348</b>	<b>167,-</b>



**T-edging with nose 15 mm**

with nose on one side to cover the cut edges.

<b>Light grey</b>			
5 m	GP* 3,50/1 m	<b>521019</b>	<b>17,50</b>
40 m	GP* 4,15/1 m	<b>521018</b>	<b>166,-</b>
<b>Dark grey</b>			
5 m	GP* 5,80/1 m	<b>5210119</b>	<b>29,-</b>
40 m	GP* 5,35/1 m	<b>5210118</b>	<b>214,-</b>
<b>Medium grey</b>			
5 m	GP* 4,10/1 m	<b>5210149</b>	<b>20,50</b>
40 m	GP* 4,70/1 m	<b>5210148</b>	<b>188,-</b>
<b>Silver</b>			
5 m	GP* 3,94/1 m	<b>5210179</b>	<b>19,70</b>
40 m	GP* 4,65/1 m	<b>5210178</b>	<b>186,-</b>
<b>Decor apple</b>			
5 m	GP* 4,96/1 m	<b>5210129</b>	<b>24,80</b>
40 m	GP* 3,08/1 m	<b>5210128</b>	<b>154,-</b>



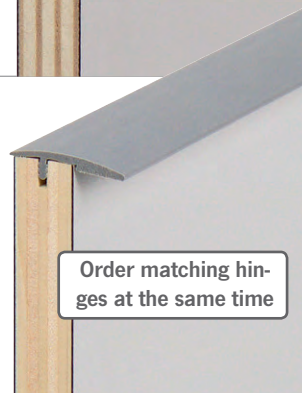
**T-edging standard 15 mm**

<b>Dark grey</b>			
5 m	GP* 4,40/1 m	<b>5210019</b>	<b>22,-</b>
40 m	GP* 4,83/1 m	<b>520018</b>	<b>193,-</b>
<b>Medium grey</b>			
5 m	GP* 4,40/1 m	<b>5210049</b>	<b>22,-</b>
40 m	GP* 4,83/1 m	<b>5210048</b>	<b>193,-</b>



**T-edging standard 17 mm**

<b>Black</b>			
5 m	GP* 6,82/1 m	<b>5210050</b>	<b>34,10</b>
40 m	GP* 5,17/1 m	<b>5210051</b>	<b>207,-</b>



**Sling bar**

Stopper edge for shelves or cupboard shelves. For 15 mm panel thickness.

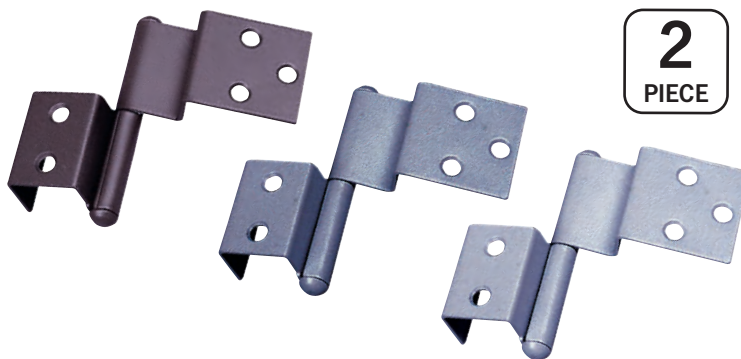
<b>Medium grey, 220 cm rod</b>	
<b>521104</b>	<b>20,50</b>
GP* 9,32/1 m	

Order matching hinges at the same time

**Special hinge for padded door edging**

Robust, powder-coated padded to match the color of the door edging. Can be used on the right or left by repositioning.

<b>Special hinge left, 2 pieces</b>		<b>Special hinge right, 2 pieces</b>	
Light grey	<b>523012</b> <b>6,10</b>	Light grey	<b>523002</b> <b>6,10</b>
	<b>52301</b>		<b>52300</b>
Brown	<b>5230102</b> <b>6,10</b>	Brown	<b>5230002</b> <b>6,10</b>
	<b>523010</b>		<b>523000</b>
Dark grey	<b>5230112</b> <b>6,10</b>	Dark grey	<b>5230012</b> <b>6,10</b>
	<b>523011</b>		<b>523001</b>
Medium grey	<b>5230142</b> <b>6,10</b>	Medium grey	<b>5230042</b> <b>6,10</b>
	<b>523014</b>		<b>523004</b>



**2**  
PIECE

**Mounting accessories**



<b>Universal slot milling cutter</b>	
30 x 1,5 mm	<b>52701</b> <b>6,30</b>

**Special adhesive**

For gluing edging into the wooden groove. Content 85 g

<b>52713</b>	<b>9,80</b>
GP* 11,53/ 100 g	

**White glue tube Bindau-RS**

20 g	<b>52714</b> <b>3,20</b>
GP* 16,00/ 100 g	



**Dübelfix**

Marking aid for easy installation of wooden dowels.

Ø 6 mm, 4 pcs.	<b>53245</b> <b>3,30</b>
----------------	--------------------------





**Padded corner profile**

Padded special profile for 90° connection of 15 mm furniture boards. Color matches the glue and furniture handles. Length 220 cm

Dark grey **522001 18,95**

GP\* 8,61/1 m

Medium grey **522004 18,95**

GP\* 8,61/1 m

**Aluminum corner profile**

90° profile as connection for 15 mm. Wooden plates. Length 220 cm. Aluminum

2 sides open **522141 68,90**

GP\* 31,32/1 m

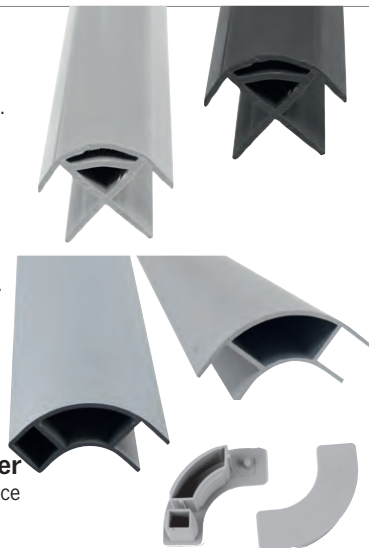
1-sided open **52216 61,50**

GP\* 27,95/1 m

**End cap for aluminum corner profile** Medium grey, price per piece

left **522234 4,60**

right **522224 4,60**



**Furniture corner profile Silver**

anodized aluminium, 15 mm on both sides, length 220 cm.

Medium grey **58158 20,50**

GP\* 9,32/1 m



**NEW**

**End profile**

Furniture end profile, silver anodized aluminum, 15 mm, length 220 cm.

Medium grey **58159 20,50**

GP\* 9,32/1 m



**NEW**

**Aluminum profiles**

① **Clamping profile**

Lateral closure of roof trim, makes installation easier. Sturdy end profile for cladding panels. Suitable for panel thicknesses of 3 - 4 mm. Length 2,54 m

silver anodized **51210 17,95**

GP\* 7,07 / 1 m

② **U-profile**

for the protection of 15 mm wooden edges.

Length 2 m, 20 x 20 x 2 mm,

silver anodized **58820 21,95**

GP\* 10,97 / 1 m

**Aluminum angle profiles**

e.g. as a finishing strip for floor panels,

for construction of bed supports or mounting of solar panels. Length 2 m

③ 20 x 20 x 2 mm

Alu nature **51201 14,50**

GP\* 7,25 / 1 m

④ 30 x 20 x 2 mm

Alu nature **51202 18,30**

GP\* 9,15 / 1 m 13,40

⑤ 30 x 30 x 2 mm

Alu nature **51203 22,10**

GP\* 11,05 / 1 m

70 x 30 x 2 mm (not shown)

Alu nature **51205 37,30**

GP\* 18,65 / 1 m

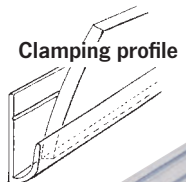
⑥ **Floor end strip aluminum**

Beveled on the flooring side for easier sweeping of your mobilehome. Standing area ribbed for high slip resistance. Rounded corner. 3 m rod, 25 x 14 x 1,5 mm, black anodized

**51220 26,95**

GP\* 8,98 / 1 m

**Clamping profile**



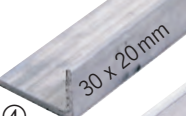
① **U-profile**



② **Angle profile**



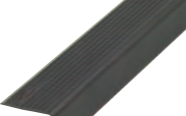
③ 20 x 20 mm



④ 30 x 20 mm



⑤ 30 x 30 mm



⑥

**Edging for banding machines**

Without hot melt adhesive.

Oak 20 x 2 mm 10 m GP\* 1,86/1 m **290100 18,60**

20 x 2 mm 50 m GP\* 1,80/1 m **290101 90,-**

White 20 x 2 mm 10 m GP\* 1,86/1 m **290110 18,60**

20 x 2 mm 50 m GP\* 1,80/1 m **290111 90,-**

Apple 19 x 2 mm 10 m GP\* 1,65/1 m **521680 16,50**

19 x 2 mm 50 m GP\* 1,60/1 m **521681 80,-**

Silver 20 x 2 mm 10 m GP\* 2,59/1 m **521640 25,95**

20 x 2 mm 50 m GP\* 2,54/1 m **521641 127,-**

Walnut 20 x 2 mm 10 m GP\* 1,65/1 m **521571 16,50**

20 x 2 mm 50 m GP\* 1,60/1 m **521572 80,-**

Walnut 23 x 2 mm 10 m GP\* 2,25/1 m **521573 22,50**

23 x 2 mm 50 m GP\* 2,20/1 m **521574 110,-**

Black 19 x 2 mm 10 m GP\* 1,65/1 m **521280 16,50**

19 x 2 mm 50 m GP\* 1,60/1 m **521281 80,-**

Dark grey 20 x 2 mm 10 m GP\* 3,80/1 m **521560 37,95**

20 x 2 mm 50 m GP\* 3,74/1 m **521561 187,-**



**Sealing piping round / Y-profile**

Easy adaptation of wooden parts to the floor, side and roof cladding.

Medium grey Ø 5 mm 5 m GP\* 3,19/1 m **5250049 15,95**

Medium grey Ø 5 mm 50 m GP\* 3,72/1 m **5250048 186,-**

Silver Ø 5 mm 5 m GP\* 3,10/1 m **5250079 15,50**

Silver Ø 5 mm 50 m GP\* 3,04/1 m **5250078 152,-**

Dark grey Ø 5 mm 5 m GP\* 5,15 / 1 m **5250019 5,15**

Dark grey Ø 5 mm 50 m GP\* 49,90 / 1m **5250020 49,90**

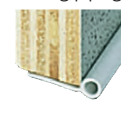
Black Ø 5 mm 5 m GP\* 15,60 / 1m **5250050 15,60**

Black Ø 5 mm 50 m GP\* 182,- / 1m **5250051 182,-**

Medium grey Y-profile 5 m GP\* 5,79/1 m **5250849 28,95**

Medium grey Y-profile 100 m GP\* 5,75/1 m **5250848 575,-**

Round sealing piping



Sealing piping Y-profile

**NEW**

**CARBEST**



**Cable tie**

For quick attachment of hoses or cables. Plastic, assorted colors. 200 x 3,5 mm

100 pcs. **810780 3,90**

**Rivets/Dowels/Drive-in nuts**

① **Expansion rivets** (not shown), 3,2 x 13 mm, 10 pcs. **29426 4,80**

② **Expansion dowel incl. M4 screws** For attaching furniture to the car body. 4 pcs. **53241L 53241 4,-**

③ **Drive-in nuts M6 thread.** For connecting furniture parts. 20 pcs. **53240L 53240 6,90**

④ **Sleeve nut M6** 4 pieces **29357L 29357 4,60**



**CARBEST**

**Adhesive base for cable ties**

Plastic base, back with 3M adhesive tape. For cable ties up to a width of 3,5 mm. Color: black. Dimensions: 20x20 mm, 50 pcs. Cable ties not included.

**810800 4,99**

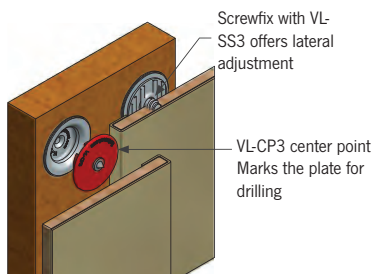


# FURNITURE ACCESSORIES, PROFILES, FLOOR PANELS

## Very Low Profile Clip Set - panel mounting

Perfect for mounting removable thin-walled panels/cladding with a shallow depth. No special installation tools are required. The sets can be glued and/or screwed together.

- ① **Very Low bushings**  
100 pcs. **532011** 106,-
- ② **Profile stainless steel screw**  
10 pcs. **532020** 10,90



## Floor finishing-strip aluminum

Beveled on the flooring side for easier sweeping of your mobilehome. Standing area ribbed for high slip resistance. Rounded corner. 3 m rod, 25 x 14 x 1,5 mm, black anodized

**51220** **26,95**  
GP\* 8,98 / 1 m

## Connecting profiles for 3 mm thick cladding panels



### ① Joint connection profile

For connecting the cladding panels. 220 cm long.

Light grey GP 3,61 / 1 m **51101** 7,95  
Dark grey GP 3,86 / 1 m **511011** 8,50

### ② Aluminum end profile

Lateral closure of roof cladding, makes installation easier and is also a stable end profile for cladding panels. Suitable for panel thicknesses of 3 - 4 mm. Anodized aluminum

Length: 2,54 m GP 7,07 / 1 m **51210** 17,95

### ③ End profile

Edge protection and facing for the outer sides of the cladding panels. Makes assembly easier. 220 cm long.

Light grey GP 2,77 / 1 m **51100** 6,10

### ④ Connecting profile outside, 90°

For the corner connection of the cladding panels. 220 cm long.

Dark grey GP 3,07 / 1 m **511021** 6,75

### ⑤ Connecting profile inside, 90°

For 90° corner joints of cladding panels, especially necessary for interior cladding of high roofs. 220 cm long.

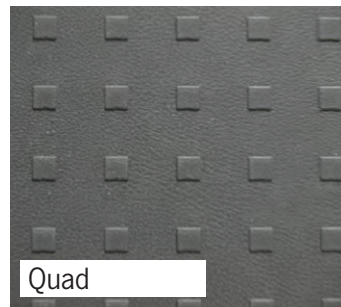
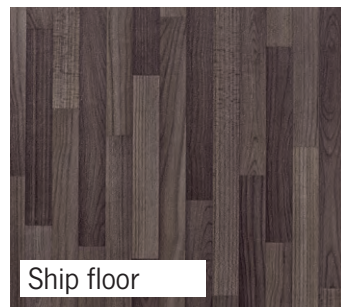
Light grey GP 3,07 / 1 m **51103** 9,40

### Cap screws for fastening the cladding panels

3,9 x 22 mm, medium gray. 20 pcs. **513004** 3,50  
3,9 x 22 mm, brown. 20 pcs. **513000** 3,50



The inner cladding profiles match our side cladding panels, mounting thickness 3-4 mm.



## Floor plates

- Modern designs
- Haptically pleasant, textured top layer
- Slip-resistant
- Easy to clean
- Water-resistant OSB carrier plate
- Easy to process with woodworking tools

Approx. 10 mm thick, made of waterproof glued chipboard, coated with plastic floor covering.

<b>Ticino:</b>	<b>Vinyl, robust wear layer, resistant to minor damages</b>	
	340 x 180 x 0,95 cm	<b>B003ZZ0B</b> 499,-
	300 x 170 x 0,95 cm	<b>B002ZZ0B</b> 379,-
	250 x 170 x 0,95 cm	<b>B001ZZ0B</b> 359,-
<b>Ship floor:</b>	<b>Vinyl, robust wear layer, resistant to minor damages</b>	
	340 x 180 x 0,95 cm	<b>B003ZZ0C</b> 499,-
	300 x 170 x 0,95 cm	<b>B002ZZ0C</b> 379,-
	250 x 170 x 0,95 cm	<b>B001ZZ0C</b> 359,-
<b>Quad:</b>	<b>TPO, hard and sensitive surface.</b>	
	340 x 180 x 1,05 cm	<b>B003ZZ0A</b> 549,-
	290 x 163 x 1,05 cm	<b>B002ZZ0A</b> 485,-
	250 x 163 x 1,05 cm	<b>B001ZZ0A</b> 435,-

Unfortunately, it is not possible to ship floor plates. Collection only from specialist dealers.



For insulation under the base plate, we recommend X-Trem Insulation, see page 638. Our aluminum entrance profiles are suitable for finishing the entrance edges.

**REIMO furniture handle 2000**

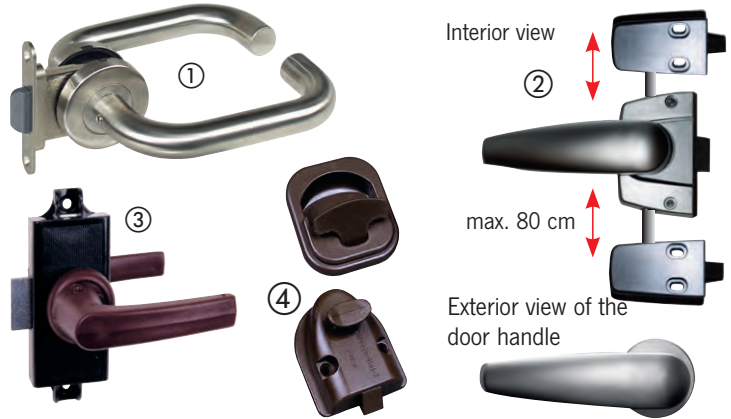
- For wooden panels from 15-18 mm
- 10.000 tested locking devices, tested by TÜV Mannheim

①	Light grey	52415	7,90
②	Medium grey	524154	7,90
③	Dark grey	524151	7,90
④	Brown	524150	7,90
⑤	Dark grey	524101	7,60
⑥	Brown	524200	6,40



**Bathroom locks**

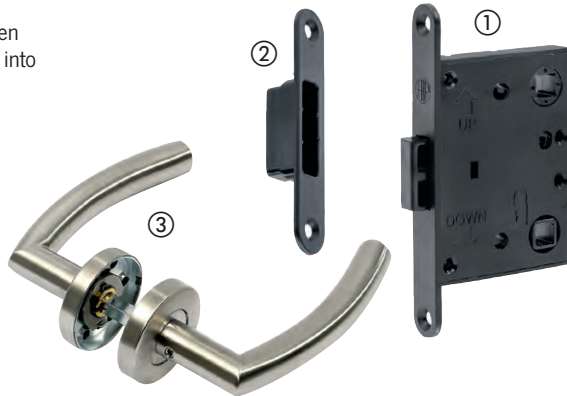
- ① **Door handle set**  
Mortise latch lock with square nut, complete with door handle and fixing rosettes. Nickel-plated zinc die-cast lock case.  
Wall thickness up to 40 mm **53265 70,90**
- ② **Bathroom lock with three-point locking system**  
2 rotating rods, 80cm each, can be shortened, for wall thicknesses of 12-15 mm  
Silver matt **52473 48,70**  
Shiny chrome **524731 55,90**
- ③ **Bathroom lock, 3-piece with rosettes and door handle**  
Brown **52472 14,50**
- ④ **Bathroom lock**  
oval shape, recessed design with inner opening  
Brown **524250 10,50**



**Mortise latch lock Magnet-Lock**

Mortise lock for room doors with magnetic locking. When the door is closed, the lock latch is magnetically pulled into the counter plate. Can be used on the left and right.

- ① **Mortise lock**  
Installation size: 80,5 x 59 mm, thickness 12 mm  
**532511 14,50**
- ② **Counter plate for 532511**  
**532512 7,90**
- Lever handle sets for mortise latch lock**
- ③ **Crescent shape**  
Matte chrome metal finish  
**53251 22,20**



**Door / flap handle**  
Elegant bow handle with chrome finish. Width 180 mm

- ① Outside handle **534091 16,30**
- ② Lock **53418 1,20**

**Cabinet handles with push button lock**

- ① **Central push-button, polished chrome** Hole spacing: 128 mm, height: 18 mm Installation set with locking unit **53109 22,40**
- ② **Central push-button, matte silver** Hole spacing: 128 mm, height: 18 mm Installation set with locking unit **53110 21,60**
- ③ **Center push-button** Material ABS, hole spacing: 224 mm, height: 28,3 mm, incl. lock **53432 23,70**
- ④ **Central push-button, polished chrome** Hole spacing: 160 mm, width: 195 mm, height: 30 mm **52426 20,40**



**Metal handles**

- ⑤ **Cupboard handle** 210 x 25 mm, hole spacing: 158 mm, latch for this: 534131 **53413 10,80**

**Plastic handles**

- ⑥ **Furniture handle incl. snapper** 185 x 15 mm, hole spacing: 160 mm **53367 10,50**

**"Combi Line" handle**

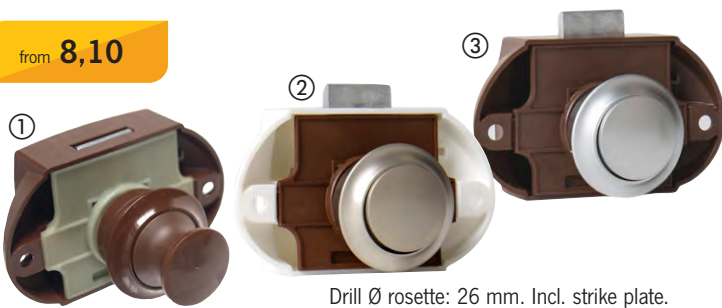
- Elegant furniture handle with push-button mechanism (one-handed operation)**
- ⑦ Silver/black **52454 6,70**

GP\* = Base price per specified unit



# PUSH-LOCKLOCKS AND TUMBLERS

from **8,10**



## Push Lock complete lock sets

- One-hand operation for cabinet doors and drawers
- Small, round, no protruding parts
- For 15 mm panel thickness
- When the button is pressed, it springs forward and serves as a handle

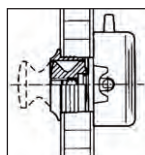
Grey	50 pcs.	532701	259,-	1 piece	53270	13,95
① Brown	50 pcs.	5327001	255,-	1 piece	532700	8,10
② Nickel matte	50 pcs.	5327051	345,-	1 piece	532705	10,80
③ Chrome matte	50 pcs.	532690	382,-	1 piece	53269	11,30

Drill Ø rosette: 26 mm. Incl. strike plate.

## Push Lock locks, double-sided operation complete sets

- For wet cell doors
- Operation from inside and outside

	50 pieces	1 piece
Brown	532712 415,-	532710 11,30
Matte silver	532716 494,-	532715 13,30



## Push Lock Mini complete sets

For small flaps and drawers

Drilling Ø rosette: 19 mm. Incl. strike plate.

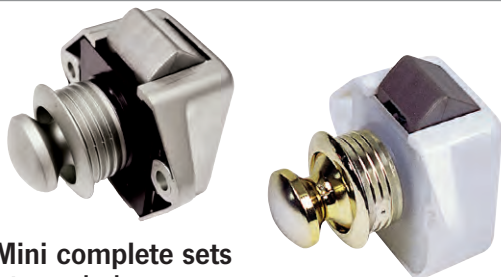
	50 pieces	1 piece
Nickel-plated matte	532741 375,-	53274 10,40
White	5327431 209,-	532743 6,50
Matte chrome-plated	5327451 375,-	532745 10,40



## Push Snap Mini complete sets With permanent snap lock

Like Push Lock Mini, but holds closed even without the button being pressed.  
Drilling Ø rosette: 19 mm. No strike plate required.

	50 pieces	1 piece
Matte silver	5327611 380,-	532765 10,90



## Rotary bolt metal (sash lock)

Fuse for large flaps. Zinc die-cast chrome plated.

Overlap 3 mm. Base plate:		
H 5 mm	53253	14,95
	53253L	
Overlap 6 mm. Base plate:		
H 8 mm	53291	13,50



## Plastic twist lock

Sash driver. Safety device for large flaps. Plastic, 3,5 mm base plate.

Brown	53254	5,20
	53254L	
White	532542	5,50
	532542L	



**Rotary Push Lock\*** Door push knob with single-hole installation. Opens with turning the knob. Door leaf thickness 1,2-19 mm

52534 25,95



**Point Push Lock\*** Door push knob with Mounting dimension Ø 25 mm, Simple installation, matte/chrome 52531 22,30  
Chrome/brass 52532 22,30

## Waterproof and dustproof



## Compression Lock Lift & Turn

Single-hole mounting. With locking cylinder, IP65/NEMA4 protection. Door leaf thickness 2-12 mm

52535 95,95



## Rotary Push Lock

Mounting dimension 3-22 mm  
Simple installation, suitable for wet rooms

52530 39,95



## Coat hook PushLock\*

for door thickness 4,0-25,4 mm  
Ø 33 mm

52533 25,95



## Twist lock

"Lift and turn" high closing force, concealed tension spring compensates for assembly tolerances.

52541 26,60

\*Note: Hook closes automatically. Flap cannot open on its own when Push Lock is open. Detailed article description see [www.reimo.com](http://www.reimo.com)

Convenient to open with just one handle



Furniture latches for door thickness 12 – 18 mm

Material plastic

Size 55 x 59 mm:	① Matte chrome/black	52498	13,95
	② Matte chrome	52499	13,95
Size 36 x 59 mm:	③ Matte black	52491	9,95
	④ Matte black/chrome	52496	12,80
	⑤ Matte chrom/black	52494	11,95
	⑥ Matte chrome	52497	13,95

**NEW**

5,1 cm, 7 cm, 1,5 cm, 4 cm

**Flap lock RV Push-Latch**

Locks and opens by pushing the furniture flap. Plastic, color: light grey (RAL 7035), 2-part with strike plate.

53460 9,90

Button sets

Metal version

① Matte frame, shiny chrome knob 55 x 55 mm, for lock <b>Mini</b>	53458	19,90
② Shiny chrome, 40 x 30 mm, for lock <b>Mini</b>	53403	8,70
③ Shiny chrome, 60 x 27 mm, for lock <b>Maxi</b>	53405	12,95
④ Push Lock - brass ABS, 63 x 20 mm for lock <b>Mini</b> brass matte 53455 7,30 Schwarz matt (o.Abb) 53457 7,80		

Plastic version

⑤ Shiny chrome, 34 x 34 mm, for lock <b>Mini</b>	53402	4,20
⑥ Shiny chrome, 35 x 35 mm, for lock <b>Mini</b>	53406	4,25
Shiny chrome, 35 x 35 mm, for lock <b>Maxi</b>	53407	4,25
⑦ Shiny chrome, Ø 35 mm, for lock <b>Maxi</b>	53404	4,25

Push-button furniture lock 42 x 42 mm

Frame and knob dark grey matte

532703 9,50

Suitable lock for 532703

Maxi lock 53416 6,30



**Complete push-button furniture lock 37 x 37 mm**

Matte frame, matte chrome knob.

Incl. lock 532702 8,90

**Flap lock Magnet-Lock**

for flap thickness 13, 16 and 19 mm

53456 6,20

Knob and rosettes



Knob loose, plastic version

Shiny chrome, Ø 23 mm, for lock **Maxi** 532790 2,85

Rosettes loose, plastic version

(not pictured)

Shiny chrome, round, for 16 mm wood for lock **Maxi** 532791 1,95  
for lock **Mini** 532772 1,80

Shiny chrome, square, for 19 mm wood for lock **Maxi** 532792 3,60

Silver matte, round, for 19 mm wood for lock **Maxi** 53278 2,50

Silver matte, round, for 13 mm wood for lock **Maxi** 53277 2,95  
50 pieces pack 532773 64,95

Push Lock Locks loose – for panel thickness 12–19 mm Lock and knob can be freely combined

Freely combinable with many buttons

- Various design combinations possible
- For 14-16 mm panel thickness (unless otherwise specified)
- For individual expansion

The basis are the locks, which can be equipped with various knobs and rosettes. Please always order knob & rosette or knob set to match. Also order strike plate separately.

① <b>Maxi</b> lock	53416	6,30
② <b>Mini</b> lock	53415	4,50



Strike plates

Plastic version

① With damping. Screw mounting. Material: ABS W 53 x D 16 x H 11 mm.	53419	1,10
② Screw mounting. Material: ABS W 49 x D 11 x H 6 mm.	534190	0,90
③ W 26 x D 28 x H 6 mm.	A1332750	5,10
④ W 53 x D 28 x H 10 mm.	A1311380	0,60

Metal version


⑤ Screw mounting. Material: Steel W 35 x D 13 x H 9 mm.	534191	1,35
⑥ Screw mounting. Material: Steel W 30 x D 23 x H 10 mm.	52460	0,70



Numbers in italic = retailer information for loose goods in packaging units



# BOW HANDLES, LATCHES, FLAP DAMPERS




**Locking stop**  
Screw-on, secures doors up to 17 mm thick. Also as a refrigerator lock. Simple assembly  
Brown **532650 3,95**



**TIP**

**Tension band fastener**  
with grip tab  
**52544 10,80**




**Furniture snapper**  
Holds flaps and drawers  
**35236 3,15**



**2**  
PIECE

**Mini Latch**  
Opens and closes by simply pressing the flap.  
2 pieces **532521 5,80**  
**53252**



**Snap lock**  
Simple plastic snap lock  
**52539 13,60**



**1**

**1 Metal handle**, 173 x 22 mm, hole spacing 160 mm  
**53440 7,40**

**2 Metal handle** made of zamac  
**53441 25,80**



**Tension band fastener**  
with toggle handle-  
Closure **52543 12,70**  
Pin **52545 3,60**



**Metal snapper**  
Tumbler for drawers, metal 2 pieces  
**532490 1,20**



**2**  
PIECE

**Double bullet snapper**  
For drawers and flaps. Nickel-plated with chrome steel balls 43 mm.  
2 pieces **532551 10,70**  
**53255**



**Felt padding**  
20 pcs.  
**52230 2,95**

## Bow handles



**1 Metal handle**, 200 x 25 mm, hole spacing 160 mm  
**53414 10,90**



**2 Plastic handle**, 188 x 20 mm Hole spacing 128 mm  
**53411 6,30**



**3 Plastic handle silver matte** Hole spacing 160 mm  
**293205 15,20**



**4 Matte stainless steel handle** Hole spacing 96 mm  
**53122 6,90**



**5 Nylon handle medium gray** Hole spacing 96 mm  
**53118 11,50**



**6 Nylon handle light grey** Hole spacing 64 mm  
**53112 6,90**

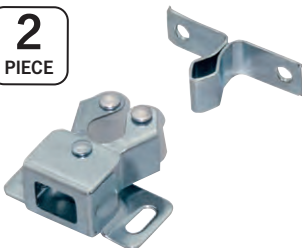


**7 Bridge handle silver** 265 x 13 mm For gluing in the lens profile  
**534090 160 mm hole spacing 53409 3,90**  
**53409L**



**2**  
PIECE

**Plastic snapper**  
Tumbler for drawers.  
2 pieces **532501 3,95**  
**53250**




**2**  
PIECE

**Double roller snapper**  
Metal version, galvanized  
2 pieces **532502 3,70**  
**532502L**



50 x 70 mm

**Plastic snapper**  
With self-adjusting latch. With closing angle. Body, latch, guide and closing angle: nylon. Spring: stainless steel.  
**52540 9,70**



**1 Tongue lock**  
Galvanized steel, for 8 mm square socket wrench. Dimensions: 100 x 19 x 10 mm  
**53246 7,30**

**2 Socket wrench for tongue lock**  
7-10 mm **53247 7,95**





# FURNITURE CONSTRUCTION HINGES

**4 Piece**




**Universal hinges single cranked**  
for surface mounted doors, one lobe cranked. Steel, 4 pieces, length 50mm  
brass plated polished  
53190 6,30  
nickel-plated  
53191 14,70

**4 Piece**



**Universal hinges double cranked**  
for surface-mounted and inset doors, cranked, one lobe cranked  
Length 50 mm  
nickel-plated 532684 19,20  
53268  
burnished 532844 8,60  
53284

**4 Piece**



**Universal hinges straight**  
a lobe cranked. 4 pieces

<b>Hinge 50 mm</b>			<b>Hinge 38 mm</b>	
galvanized 532824 5,30			galvanized 532174 5,70	
<i>53282</i>			<i>53217</i>	
nickel-plated 532674 8,40			nickel-plated 532164 8,60	
<i>53267</i>			<i>53216</i>	
brass-plated 532834 6,40			burnished 532024 5,99	
<i>53203</i>			<i>53202</i>	

from **17,10**

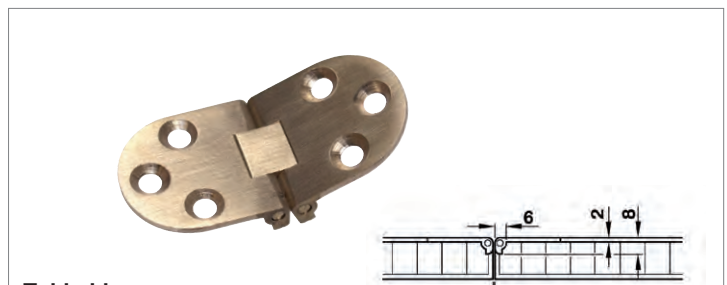


**Angle fitting**  
Tabletop holder aluminum.  
natural anodized 53358 17,10  
black anodized 53359 17,90

60 mm 45 mm 20 mm 35 mm

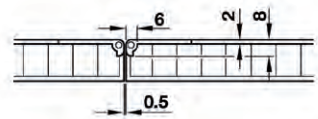


Alternative mounting options




**Table hinge**  
Brass matte, for flush mounting, 65 x 30 mm

1 piece	532192	12,50
2 pieces	532193	27,30




**4 Piece**



**Film hinge**  
4 pieces, 40 mm wide  
White 532084 3,50  
*53208*  
Brown 532094 3,50  
*53209*  
Black 53364 2,85  
*53364L*


**Piano band**  
for 16 mm plates. 175 cm long  
stainless steel, rustproof.  
532051 17,50

**2 Piece**



**Special hinge for semi-recessed doors**  
Robust; powder-coated; color-matched to the door edging from page 712. Can be used on the right or left by repositioning.

<b>Special hinge left, 2 pieces</b>		<b>Special hinge right, 2 pieces</b>
Light grey 523012 6,10		Light grey 523002 6,10
<i>52301</i>		<i>52300</i>
Brown 5230102 6,10		Brown 5230002 6,10
<i>523010</i>		<i>523000</i>
Dark grey 5230112 6,10		Dark grey 5230012 6,10
<i>523011</i>		<i>523001</i>
Medium grey 5230142 6,10		Medium grey 5230042 6,10
<i>523014</i>		<i>523004</i>



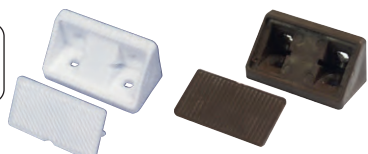
**Furniture hinge**  
With small mounting Ø 26 mm. Suitable for thin doors/top depth 12 mm. Opening angle: 90°. Adjustable.  
2 pieces 53261 8,60



**Flap bracket**  
Sturdy design, adjustable in height and sideways, for screwing on. High spring force, slotted holes for easy installation. Install the top edge of the flap at a distance of 2 mm from the ceiling/wall. Ideal for overhead cabinets and chests.  
2 pieces 53228 11,50

Connector for furniture making

10 Piece



Corner connector

4-hole, plastic. Easier and more precise to fit than a sheet metal bracket, with cover cap. 10 pieces

Grey	<b>53230</b>	<b>8,60</b>	Light brown	<b>532301</b>	<b>8,60</b>
	<i>53230L</i>			<i>532301L</i>	
Brown	<b>532300</b>	<b>8,60</b>	White	<b>532303</b>	<b>8,60</b>
	<i>532300L</i>			<i>532303L</i>	

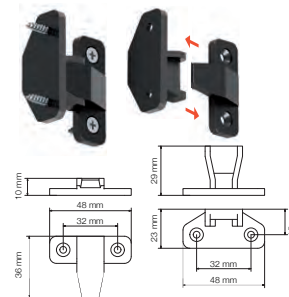
10 Piece



Corner connector Mini

2-hole, plastic. Light grey With cover plate. 10 pieces

	<b>53235</b>	<b>4,90</b>
	<i>53235L</i>	

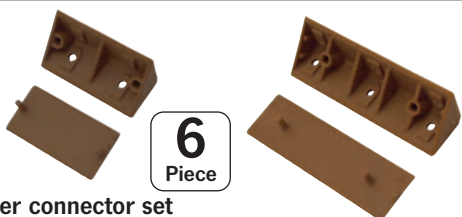


Furniture connector 0915

- Very compact and resistant
- Precise snap lock

The new 0915 interwall joint is designed for a minimal aesthetic effect, available in black color. Very easy to assemble: Just connect the male and female ones in the suggested position and screw them in (screws are not supplied).

4 pieces 532002 11,70 16 pieces 532003 29,95



6 Piece

Corner connector set

Universal corner connector with cover plate for building benches, cupboards, storage boxes, etc.

For screws up to Ø 4 mm:

W 60 x D 21 x H 21 mm	W 100 x D 21 x H 21 mm
6 pieces <b>53233</b>	6 pieces <b>53234</b>
<b>13,40</b>	<b>15,30</b>

Square furniture connectors, 10 pieces

Brown	<b>532310</b>	<b>4,40</b>
	<i>532310L</i>	
White	<b>532313</b>	<b>4,40</b>
	<i>532313L</i>	

10 Piece



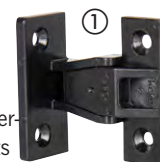
Furniture connectors

① Keku AS Set

- For screwing onto panels

Installation with chipboard screws, countersunk head diameter 4,0 mm. Set consists of: 1 x panel part, 1 x frame part

532004 4,95



② Keku EHS Set

- For screwing onto substructures

With lateral guide. Installation with chipboard screws, countersunk head diameter 4,0 mm. Set consists of: 1 x plate part with latching lug, 1 x frame part

532005 4,95



① Cabineo X Cabinet connectors and shelf supports with clean surface finish, 10 pcs. per set. 10 pcs. 532315 7,90

500 pcs. 532315L 0,48



② Time-saving body connector with open housing

- Can be used with Cabineo X screws / shelf supports
- Flexible and easy installation of the cabinet cover and shelves
- For any CNC machine thanks to simple processing on the surface
- Ideal for shelves, built-in cabinets, access panels and adjustable shelves

10 pcs., nickel-plated shelf supports 532316 6,90

500 pcs. 532316L 0,40



Flap display



4 Piece

Support flap holder plastic

for lightweight flaps up to approx. 500 mm wide. 4 pieces

Light grey	<b>532101</b>	<b>6,60</b>
	<i>532101L</i>	
Light brown	<b>532102</b>	<b>6,60</b>
	<i>532102L</i>	



from 6,50

Metal support flap holder

Keeps even large flaps closed by itself with spring force, no guard locking required.

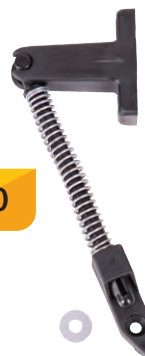
Can be used on the right or left.

140 mm	<b>53211</b>	<b>53211L</b>	<b>8,20</b>
200 mm	<b>53212</b>	<b>53212L</b>	<b>6,50</b>
250 mm	<b>53213</b>	<b>53213L</b>	<b>7,40</b>

Stand SESAM II

With galvanized steel compression spring. Black plastic

3,10



53227 3,10

4 Piece



Metal chair bracket

for attaching furniture to the vehicle body. 4 pieces

Angle, 4 countersunk screw holes

25 x 25 x 15 mm 532264 8,95

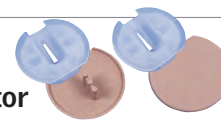
Heavy angle

for screws up to Ø 6 mm

50 x 50 x 34 mm 532204 16,20

53220

Pot connector



Ideal for cabinet construction.

Concealed, flush 90° connections. Incl. cover caps. Ø 25 x H 8 mm.

Light brown 10 pcs.	<b>532870</b>	<b>6,30</b>
Light brown 50 pcs.	<b>53287</b>	<b>17,20</b>
Medium grey 10 pcs.	<b>532875</b>	<b>5,60</b>
Medium grey 100 pcs.	<b>532874</b>	<b>32,90</b>



Clothing rail pull-out

Nickel-plated steel, length 250 mm 53325 8,40



Gas damper 100N

Stander for heavy flaps.

With 2 screw-on brackets.

Length 275 mm 53218 14,95

TIP



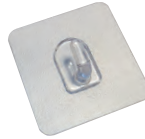
## COAT HOOKS AND FOLDING CONSOLES

**NEW**



### Magic hook type G - set of 4

Type G, threaded screw incl. nut, load capacity 2,5 kg, dimensions: 4,7 x 4,7 cm  
**53393 17,95**



### Magic hooks - set of 4

Sticks to almost any smooth, grease-free, non-porous surface. Reusable, simply clean dirty adhesive side with water. Load capacity up to approx. 2,5 kg, dimensions: 4,7 x 4,7 cm  
**53377 10,95**



### Wall hook

Dimensions: 5,3 x 5,3 x 1,3 cm  
 Chrome **601290 8,95**  
 Black **53590 8,95**  
*53590L*



### Strong suction cup hook - set of 2

② Strong hold without drilling. Suitable for almost all smooth surfaces. transparent adhesive surface, max. 3 kg load capacity, dimensions: 10 x 10 cm  
 ① STRONG S, small hook **66595 5,95**  
 ② STRONG M, large hook **66596 7,95**



### Wall hook

with fold-out hooks  
 Dimensions: 7,5 x 7,5 x 1,5 cm  
 Chrome **533381 11,95**  
*533381L*  
 Matte silver **53363 11,50**  
*53363L*



### Coat hook

retractable, on plastic base, zamac hook, matte silver-colored Dimensions: 7 x 2,5 cm  
**53356 13,95**



### Coat hook Extra shiny chrome,

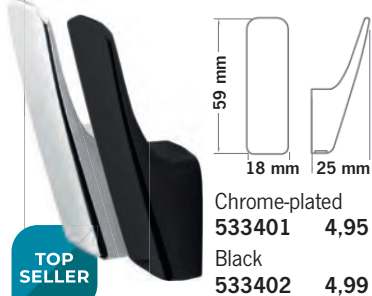
dimensions: 5 x 5 x 4,5 cm  
**53354 9,50**



### Installation folding hook

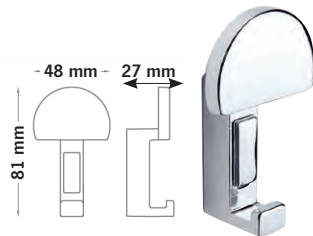
for recessing into the wall, dimensions: 8,8 x 2,2 x 1 cm  
**60126 13,80**

### Metal coat hook

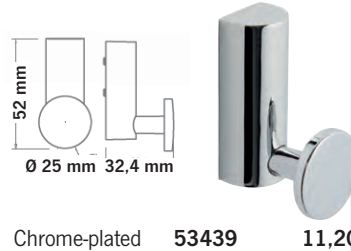


59 mm  
 18 mm 25 mm

Chrome-plated **533401 4,95**  
 Black **533402 4,99**



Chrome-plated **53438 9,95**



Chrome-plated **53439 11,20**

### Plastic hook



Hewi, Ø 40 mm, light grey  
**53328 9,95**



Dimensions 65 x 70 mm, chrome-plated  
**53333 3,95**

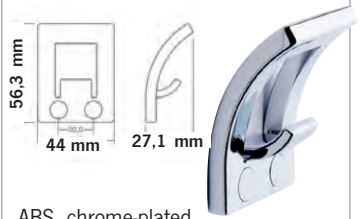
from **1,95**



Silver **53342 1,95**

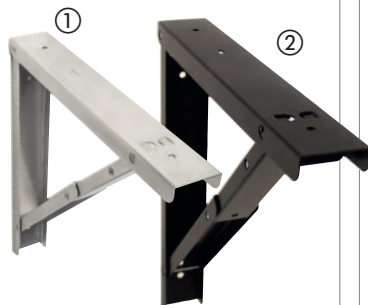


Ø 6 x W 7 x D 5 cm chrome-plated  
**53340 18,90**



ABS, chrome-plated  
**53435 3,50**

## Consoles for foldable work surfaces



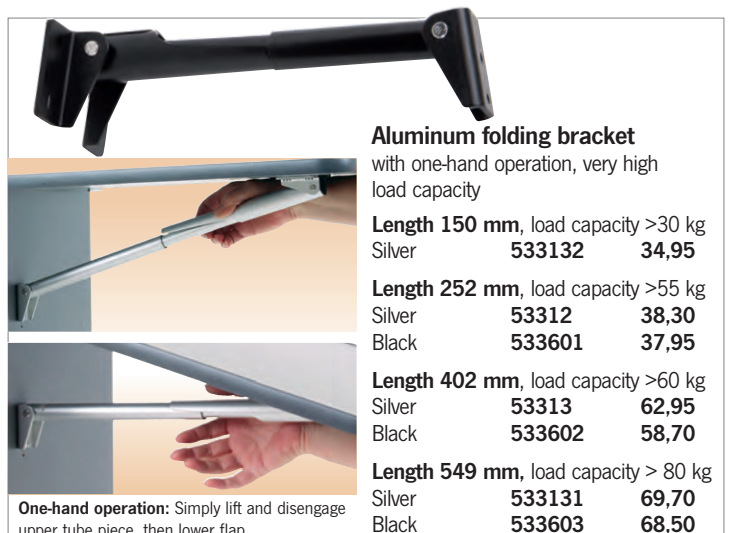
### Metal hinged brackets

① With snap-in spring, length: 250mm galvanized **53374 20,50**  
 ② Folding hinge in the middle, assorted colors, length: 330 mm, load capacity: 100 kg.  
**53322 39,-**



### Plastic bracket swivels to the side, length: 190 mm

Brown **53300 5,50**  
 Grey **53302 5,50**



### Aluminum folding bracket

with one-hand operation, very high load capacity


Length 150 mm, load capacity >30 kg  
 Silver **533132 34,95**

Length 252 mm, load capacity >55 kg  
 Silver **53312 38,30**  
 Black **533601 37,95**

Length 402 mm, load capacity >60 kg  
 Silver **53313 62,95**  
 Black **533602 58,70**

Length 549 mm, load capacity > 80 kg  
 Silver **533131 69,70**  
 Black **533603 68,50**

**One-hand operation:** Simply lift and disengage upper tube piece, then lower flap.



**4,90**

**5,50**

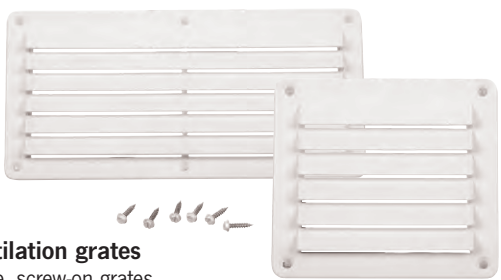
**Ventilation grates**  
Grate with rotatable blades. Outer Ø 164 mm, mounting Ø 128 mm, installation height approx. 10 mm.

White	53033	4,90
Black	53034	5,50




**Ventilation grate with shaft**  
External dimensions 94 x 93 mm, mounting Ø 78 mm. Shaft height approx. 61 mm. Installation height approx. 10 mm.

White	53035	4,90
-------	-------	------




**Ventilation grates**  
White, screw-on grates with slats. UV-resistant ABS. Sealing compound is already applied. Installation height approx. 14 mm. Incl. screws.

142 x 80 mm	53036	5,50
142 x 127 mm	53037	5,90
264 x 127 mm	53038	6,90



**Ventilation grate round**  
Outer Ø 145 mm, inner Ø 120 mm

White	53012	6,60
Outer Ø 100 mm, inner Ø 76 mm		
Brown	53007	6,30
White	53008	6,10



**Furniture ventilation rosette**  
For cabinet ventilation, prevents condensation in cabinets

Ø 60 cream	53016	1,10
Ø 60 grey	53017	1,10
Ø 32 cream	53018	1,15
Ø 32 grey	53019	1,15



**6,60**

**Sliding fan**  
Plastic, 8 holes (countersunk), 250 x 70 mm, ivory

53022	6,60
-------	------




**Sliding fan**  
Plastic, 385 x 220 mm, ivory

53023	13,90
-------	-------



**Floor ventilation**  
Plastic, natural, outer Ø 60 mm, ventilation opening = L 7 cm<sup>2</sup>  
Shaft length 55 mm


53042	4,40
-------	------



**Aluminum**

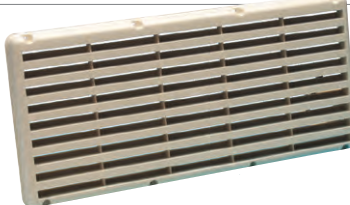
**Luxury ventilation grate**  
For refrigerator or furniture ventilation. 400 x 80 mm, aluminum

White	53021	26,80
-------	-------	-------



**Furniture ventilation grates and airsupply for heating systems**  
Plastic, silver

205 x 40 mm, oval	53040	6,10
250 x 50 mm, square	53041	5,30



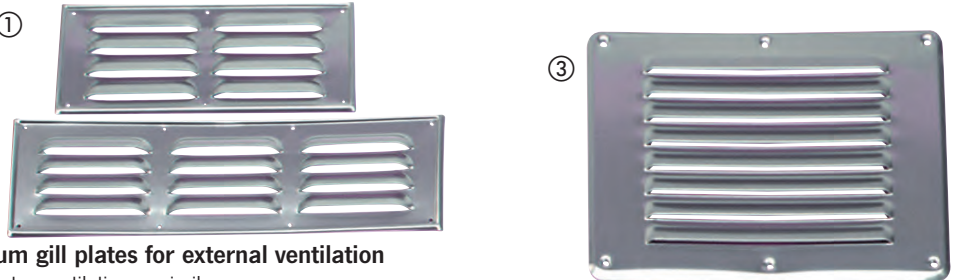
**Surface-mounted ventilation grate**  
Plastic, 365 x 170 mm, ivory

53025	19,70
-------	-------



**Plastic ventilation grate with mosquito net**  
White 150 x 200 mm

53027	8,30
-------	------



**Aluminum gill plates for external ventilation**  
f. refrigerator ventilation or similar.

① 255 x 115 mm	53000	14,50
② 360 x 115 mm	53001	14,40
③ Gill plate for gas box ventilation. 265x205 mm, ventilation cross-section 100 cm <sup>2</sup> . High-gloss anodized aluminium.	53004	21,40

**Expanded metal sheet**  
ideal for installation in the gas box to ensure sufficient air supply.

Material / surface: Raw steel Recess 6 x 3,4 mm  
Thickness: 1,2 mm Weight: 0,846 kg  
1 piece, 60 x 100 cm **53048** 26,90





# Rollout Slider Giant

The heavy duty pull-outs for extreme loads

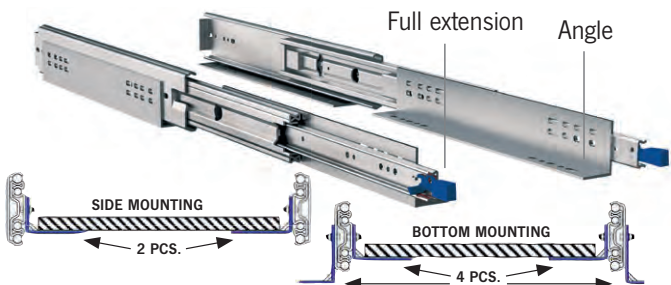


- High load capacity
- Perfect for building rear extensions



## Single extension for heavy load

can be loaded up to max. 100 kg. Not detachable.  
 500 mm, pair **53381** **76,90**  
 700 mm, pair **53380** **83,30**



**69,90**



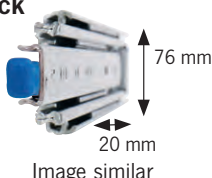
## Soft-roll full-extension runner, steel

capacity up to max. 110 kg. Not detachable.  
 700 mm, pair **533006** **69,90**

## Full-extension runner with mechanical lock

when retracted/extended. Steel. Capacity up to max. 227 kg. Not detachable.

559 mm, pair	<b>533000</b>	<b>99,95</b>
711 mm, pair	<b>533001</b>	<b>139,-</b>
965 mm pair	<b>533002</b>	<b>179,-</b>
<b>Angle for mounting full extension:</b> 559 mm, 2 pieces	<b>533004</b>	<b>23,95</b>
711 mm, 2 pieces	<b>533005</b>	<b>29,95</b>
305 mm, piece	<b>533003</b>	<b>12,95</b>



## Full-extension steel, up to a maximum of 400 kg

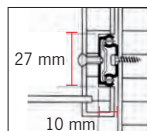
Extendable in both directions, ideal for loading rear garages. 930 mm, piece **533803** **299,90**

## Furniture pull-outs

### Partial extension ball bearing mounted

large pull-out length and drawer width, guide can be milled in. Capacity up to 12 kg, cannot be unhinged.

278 mm, pair	<b>53382</b>	<b>11,90</b>
342 mm, pair	<b>53383</b>	<b>11,95</b>



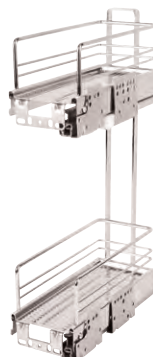
### Partial pull-out

Galvanized steel, ball bearing mounted. Can be unhooked using a release lever, with retaining catch to lock in closed position, load capacity up to 35 kg. With self-closing device.

400 mm, pair	<b>53387</b>	<b>27,30</b>
--------------	--------------	--------------

## Mini pharmacy pull-out

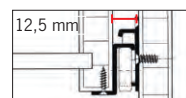
- Perfect for narrow cabinets
- Drawers with ball bearings & soft-close system
- Chrome-plated metal frame with railing
- Furniture front can be individually attached & adjusted



**Pull-out frame with 2 shelves** Pull-out frame is supplied with pull-out rails and fitted to the inside right-hand side wall of the cupboard. Required internal dimensions of at least H 47 x W 12 x D 28 cm. Cupboard front is attached to the shelves and can be aligned with screws. **52320** **155,-**

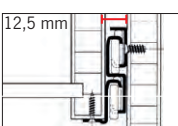
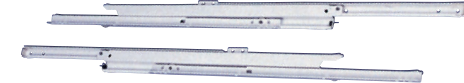
## Drawer pull-outs

- Slim design, together only approx. 25 mm wide
- Load capacity up to 30 kg
- Very good running properties, easy to unhook



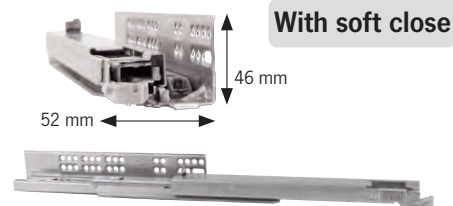
### Partial pullouts detachable

300 mm, pair	<b>53120</b>	<b>15,70</b>
350 mm, pair	<b>53378</b>	<b>13,70</b>
400 mm, pair	<b>53376</b>	<b>10,60</b>
550 mm, pair	<b>53126</b>	<b>14,40</b>



### Full pull-outs detachable

300 mm, pair	<b>53370</b>	<b>34,70</b>
400 mm, pair	<b>53371</b>	<b>37,60</b>
500 mm, pair	<b>53372</b>	<b>38,70</b>



### Full pull-outs

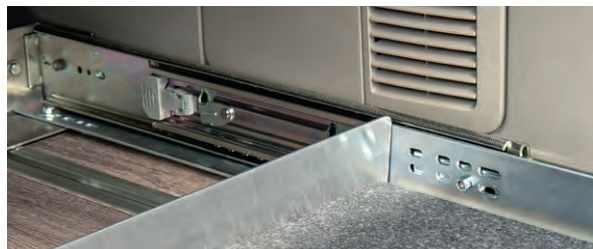
Load capacity 30 kg, soft-close-automatic

300 mm, pair	<b>53113</b>	<b>39,70</b>
350 mm, pair	<b>53102</b>	<b>39,95</b>
400 mm, pair	<b>53105</b>	<b>45,95</b>
450 mm, pair	<b>53103</b>	<b>46,95</b>

**Pick-up catch set** (without illustration) for these slides **53114** **9,-**

# The luggage butler for campers + panel vans

## Luggage drawer for convenient loading



from **479,-**

Luggage drawer in the California Ocean

### Easy and convenient loading and unloading of your vehicle with the bed in place

- Load capacity of 130 kg per pair
- Fastening covers all vehicle-specific rail spacings
- The frame is attached to the floor rails
- Special rear pull-outs for VW California Coast, VW Beach, VW Ocean, VW Multivan

The rear pull-out makes it easier to load and unload your vehicle when the rear seat is converted into a bed and utilizes the entire remaining trunk space.

The frame of the rear pull-out is connected to the vehicle at four points. Supplied as a kit.

**Scope of delivery:** Including assembly and fastening material, belt eyelets, pull-out rails, base plate and assembly instructions.

Suitable for the following vehicles, for example:	Outer dimensions width x length	Standing area width x length	Art. no:	Price
VW Avantgarde VW TrioStyle with canister system	930 x 600 mm	875 x 557 mm	50512	479,-
Mercedes-Benz TrioStyle Renault TrioStyle VW TrioLoft VW TrioStyle furniture only	1050 x 600 mm	995 x 557 mm	50513	489,-
Ford Triostyle VW CityVan VW Weekender Plus	1170 x 600 mm	1115 x 557 mm	50514	499,-
Mercedes-Benz CityVan & Weekender, Renault Weekender, VW Weekender	1220 x 600 mm	1165 x 557 mm	50515	499,-
California Beach, Multivan	1075 - 1200 x 750	1020 x 709 mm	50519	499,-



### ComfortSlider M + L mounting pull-outs

- Solid powder coated metal frame
- Safety lock
- Includes 4 lashing straps and mounting hardware
- ComfortSlider M, pull-out approx. 760 mm. For coolers with a size of max. LxW 740x410 mm. Ideal for the following Carbest coolers: 71469/71456/71457/71458/714102/714103/71375
- ComfortSlider L, extension approx. 900 mm. For cool boxes with a maximum size of LxW 910x530 mm Ideally suited for the following Carbest cool boxes: 71371/71372



Thanks to the universal pull-out rails, your cooler can be pulled out of the vehicle for convenient loading and unloading. A safety lock ensures that the rail is firmly anchored in the pushed in position during travel. **Scope of delivery:** Fastening pull-out, 4 lashing straps with which the cooler can be secured (on lashing eyes) to the pull-out frame, mounting material. Without cooler.

① **ComfortSlider M - load capacity up to 120 kg**  
Dimensions (LxWxH) outside: 790x480x65 mm, inside: 740x410 mm Weight: approx. 12,8 kg **71498 199,-**

② **ComfortSlider L - load capacity up to 120 kg**  
Dimensions (LxWxH) outside: 960x600x65 mm, inside: 910x530 mm Weight: approx. 16 kg **71499 219,-**





## ROLLER SHUTTER DOORS, PHARMACIST PULL-OUT



Silver  
53044

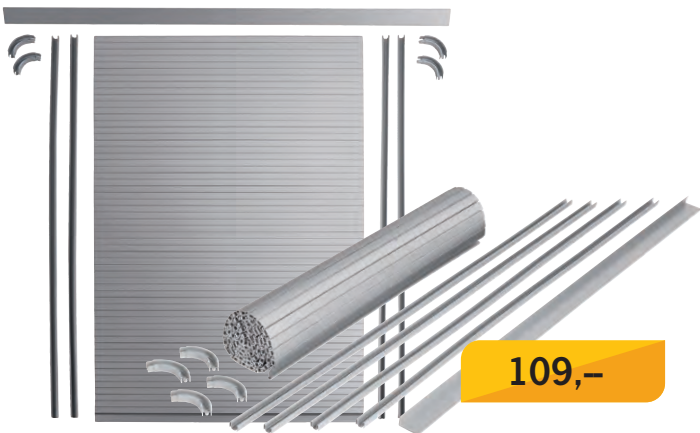


Structure,  
beige 53045



Matte black  
53047

Fig. similar to



109,-

### Roller shutter door complete set

- For building an upward-opening roller shutter door
- For maximum door size of 100 cm high and 60 cm wide
- Enables opening even in confined spaces
- Complete with cut-to-size roller shutter, rails and cover

The guide rails, the roller shutter mat and the drive-in panel can be cut to the desired door dimensions and the cupboard depth. Material: plastic.

**Scope of delivery Roller shutter door set:** 1 roller shutter mat with handle strip, H 100 x W 60 cm, 4 x guide rails for on-screwing, L 100 cm, 4 x guide bends 90° for on-screwing, 1 x drive-in cover, L 100 cm.

<b>Silver</b>	<b>53044</b>	<b>109,-</b>
<b>Structure, beige</b>	<b>53045</b>	<b>109,-</b>
<b>Matte black</b>	<b>53047</b>	<b>109,-</b>



**Sliding door shelf** Useful shelf made of weather-resistant HPL for additional storage space next to the bench (e.g. for phone, glasses, toys). Attached using Velcro tape, without modification to the vehicle. Delivered disassembled for self-assembly, takes approx. 15 min.

For VW T6.1, VW T6, VW T5, California Beach, Multivan (without plastic interior trim rear left)	<b>13226</b>	<b>149,-</b>
For Reimo-VW T6.1, Reimo-VW 6 Reimo-VW 5, (without plastic interior trim rear left)	<b>13227</b>	<b>149,-</b>
For Reimo-VW T6.1, Reimo-VW 6, Reimo-VW 5 (with plastic interior trim rear left)	<b>13228</b>	<b>149,-</b>
For VW T6.1 Caravelle, VW T6 Caravelle, VW T5 Caravelle	<b>13229</b>	<b>149,-</b>
For Mercedes Marco Polo, Citroën Spacetourer + identical Peugeot, Toyota, Opel & Fiat	<b>13230</b>	<b>149,-</b>



**NEW**

### Soft-Open-Close-System for rear doors MAN TGE YOC 2016 / VW Crafter > YOC. 2016

Quick and easy installation. Attached to original mounting points in the rear and rear doors. No drilling necessary. Enables smooth opening and closing of the rear doors. When the rear door handle is operated, the rear doors open automatically thanks to the gas pressure damper. **Note:** The rear doors can be closed gently by hand. However, they do not close automatically. Scope of delivery: 2 pcs. Gas pressure damper and installation material.

**532000 225,-**





① Table frame for REIMO floor rail

- Specially developed for REIMO Grizzly floor rail
- 2-part, quick and easy to (dis)assemble
- Tabletop can be locked and rotated
- Free-standing, can be swiveled and moved on floor rails
- High-quality table frame made of ribbed aluminum

Exclusive table frame for REIMO Grizzly floor rail. Separable and rotatable. 2-part. Straight table column Ø 60 mm L= 240 mm. Material: Anodized aluminium, with ribbed surface. With twist lock for attachment to the floor rail. With clamping for the inner column Ø 40 mm. With eccentric lever lock. L-shaped table column Ø 40 mm. Width 300 mm. Height 720 mm. Scope of delivery: 2-part table frame incl. rail adapter. Without table top. Please order mounting plate 57167 for tabletop separately. Frame color: silver **57166 299,-**

② **Mounting plate for tabletop for 57166** The mounting plate allows a tabletop (not included) to be mounted, rotated and locked in place on the table frame (de-). Mounting plate is fixed to the table top with 6 screws (not included). Scope of delivery: Mounting plate **57167 24,95**

③ **Table legs** Set of 4 folding table legs for self-assembly on 10673, table legs made of aluminum tube, powder-coated, weatherproof, table height: 670 mm, movable adjustable feet, 2 locks (folded/unfolded) **10672 179,-**

④ **Swivel table II** Lightweight tabletop with mounting plate, weight: 2,8 kg, surface: HPL, Pearl decor, weatherproof, dimensions: L 770 x W 480 mm, thickness 17 mm, with mounting plate 20 mm **10673 219,-**



Total weight Multi-Table II: 4,6 kg

Swivel table frames



Spare parts for swivel table frames

① **Replacement clamp** for swivel tables Nut welded in the center **57152 19,-**

② **Floor bearing** for swivel tables **57133 8,50**

③ **Mounting kit** for U-swivel - table to Variotech bench VW T4 (57130) **57150 32,-**

④ **Star grip** M8, grey **53127 10,50**

**Replacement plate** for tabletop - fastening (for 57120 and 57130) w/o fig. **57132 19,50**

**Swivel table standard**

Inexpensive frame. Height approx. 72 cm. Swivel range approx. 40 cm. **57111 61,50**

**U-swivel table**

For mounting on smooth side surfaces, e.g. under overhanging seats. Stable due to additional support, with flat mounting plate. Height approx. 72 cm. Swivel range approx. 40 cm. **57126 122,-**

**Swivel table comfort**

With flat mounting plate (adds only 10 mm) To accommodate the table top in the smallest space. Height approx. 72 cm. Swivel range approx. 40 cm. **57129 82,-**

**U-swivel table Comfort**

like 57126, but with additional swivel range of 30 cm due to curved table column. **57120 103,-**

**Swivel table frame made of aluminum**

Clamp lock with lever. Pivoting, height-adjustable and removable column. Carrier can be rotated and removed. Height 74 cm. **57039 189,-**



**U-swivel table Exclusive**

Table frame for REIMO Variotech bench system Classic, e.g. VW T4 Miami, Lucky etc. Height 70 cm, depth 33 cm, mounting plate ø 19 cm **57130 126,-**



57126



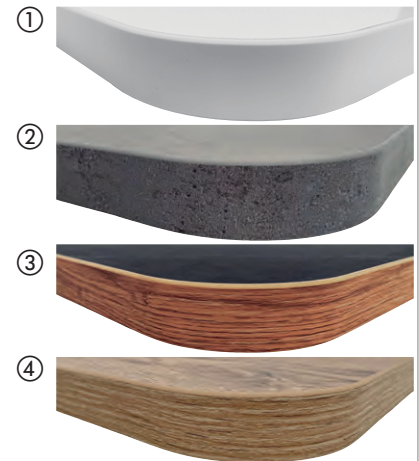
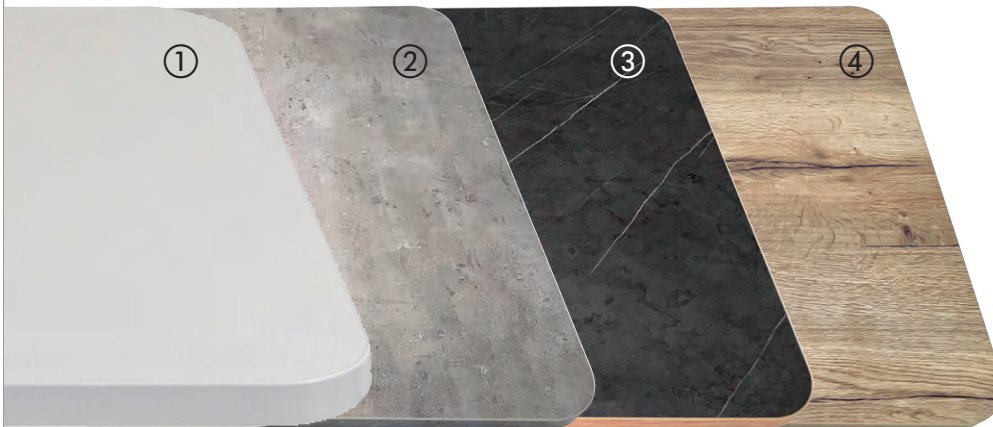
57130



# LIGHTWEIGHT TABLETOPS, TABLE SLIDING RAILS

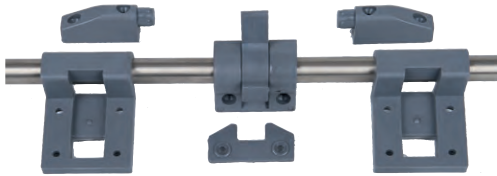
## Lightweight tabletops

High-quality lightweight tabletops, in 4 different decors and 3 different sizes. All corners with a radius of approx. 60 mm. Scope of delivery: Each table top incl. Ø3 mm drill bit for pre-drilling and 10 Ø4,5 x 20 mm screws



Dimensions	Weight	① Extra shiny white upper with protective film, underside matte white Edges: Extra shiny white with protective film	② Concrete look upper Matte white underside Edges: Concrete look	③ Marble look upper Matte white underside Edges: Oak look	④ Out look upper Matte white underside Edges: Oak look				
800 x 450 x 28 mm	3,0 kg	57171	249,-	57174	249,-	57177	249,-	57180	249,-
900 x 580 x 28 mm	4,5 kg	57172	319,-	57175	319,-	57178	319,-	57181	319,-
950 x 750 x 28 mm	6,0 kg	57173	399,-	57176	399,-	57179	399,-	57182	399,-

## Table sliding rails for wall mounting



### Table sliding rail with stainless steel support tube

Quick sliding and unhooking of the table top allows good access to benches and storage boxes, as well as quick bed construction. Lockable and fixable sliding safety device. Can be shortened as required. Length 100 cm  
57055

31,-



### Table sliding rail STILO

Oval aluminum tube, silver anodized. Black fasteners. Table can be moved by lifting and locked in the toothed grid. Length 950 mm.

57034

54,50

### Table sliding rail TGS24

Consists of: upper sliding rail (950 mm), lower sliding rail (500 mm), 2 end pieces and 2 plate supports each, compl. with operating instructions and set packaging

Grey 57092 49,90

Black 57093 49,90

### Table suspension fitting

Simple fastening option for small to medium-sized table tops. Quick mounting and dismounting of the plate.

Brown, 2 pieces 57051

13,-



Wall rail 100 cm with table mounts

Additional rails 10 cm each

### Table sliding rail stable

Tabletop can be moved by lifting. Locking positions can be determined by self-made holes. Rail with end pieces and 2 suspension pieces. Anodized aluminum with silver-grey piping.

Length 100 cm

57030

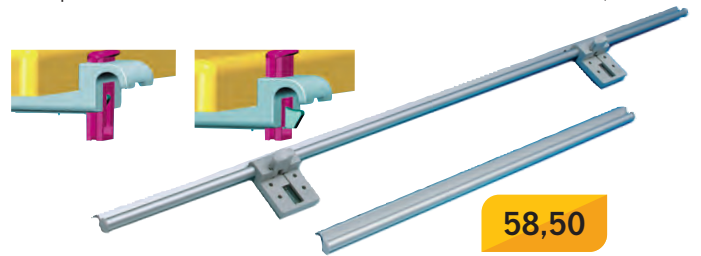
53,-

### Additional sliding rails for bed position

2 rail pieces of 10 cm each.

57032

18,50



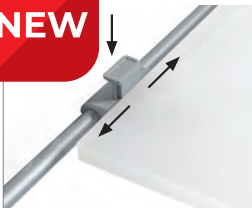
### Table sliding rail QUICK Clip

2 wall rails for hanging the tabletop and 2 Quick-Clip tabletop fasteners. The plate can be moved or unhooked at the touch of a button. The 2 rails can be used for table and bed positions, for example. Rail dimensions: 95 cm and 50 cm.

57056

58,50

NEW



You can find tools for assembly on [reimo.com/werkzeug](http://reimo.com/werkzeug)



Folding table legs - top joint

**26,-**

**Folding table leg can be folded down at the top**  
Push-button lock  
Matte silver anodized aluminum, height 72 cm  
57070 26,-

**TIP**

**Folding table leg can be folded down at the top + height-adjustable**  
Push-button lock  
Aluminum matte silver anodized Height 55,5 - 76,5 cm  
57076 38,50

**34,50**

**Folding table base top can be folded down**  
Matte silver anodized aluminum, height 72 cm  
57072 34,50

**Folding table base top can be folded down + height-adjustable**  
Matte silver anodized aluminum, height 59 - 78 cm  
57078 45,40

**Folding table leg can be folded down at the top**  
Silver anodized aluminum. Height 67,5 cm  
57027 33,-

**Height adjustment screw for table base**  
57027 5,40  
57029 5,40

**Folding table base, stable, top can be folded down**  
Metal, height 67,5 cm  
Anthracite metallic 57020 40,50  
Light grey (RAL 7035) 57014 41,50  
Brown 570140 41,50

**Folding position: Height 5 cm**



**NEW**

**Folding support leg, can be folded down at the top**  
Powder-coated aluminum, oval tube  
Total length: 675 mm  
anthracite metallic 57186 34,50  
brown (RAL 8014) 57187 34,50  
matte black 57188 34,50  
light grey (RAL 7035) 57189 34,50

**Folding table leg can be folded down at the top**  
Used by several manufacturers. Matte silver. Weight: 650 g  
Height 67,5 cm  
Matte silver 57005 31,-  
Black 57012 36,10

**Floor mounting for folding base** Black, not shown.  
57007 2,60

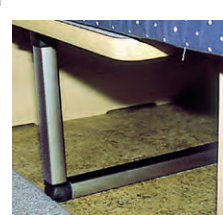
Folding table legs - center joint

**Folding table base foldable in the middle**  
Silver anodized aluminum. Height 67,5 cm  
Joint centered at 31,5 cm  
57028 39,95

**Height adjustment screw for table base** 57028  
7029 5,40

**Folding table base foldable in the middle**  
Push-button lock aluminum matte silver anodized  
Height 74 cm, joint centered at approx. 31 cm  
57074 31,-

**Bed position: Height 31,5 cm**



**Folding table base foldable in the middle**  
Metal, height 67,5 cm  
Joint centered at 31,5 cm  
Anthracite metallic 57017 40,40

**Articulated support leg**  
Powder-coated aluminum, oval tube, overall length: 675 mm, folded height: 315 mm  
anthracite metallic 57192 34,50  
light grey (RAL 7035) 57193 34,50  
matte black 57194 34,50

**NEW**

**Folding table base foldable in the middle**  
Weight: 650 g, height 67,5 cm  
Matte silver 57006 31,50  
Black 57018 34,50

**Floor mounting for folding base**  
for 57005, black  
57007 2,60

Single table leg

Can be released from the holder at the touch of a button.  
Height approx. 70 cm  
Light grey 57000 8,95

Table foot support

As a spare part or second mount.  
Black 57001 4,50

**8,95**

Table column

- For free-standing tables with removable table column
  - Easy to stow away, tilt and wobble-proof
  - Table top can be incorporated into the lying surface
  - Column height approx. 70 cm high, Ø approx. 6 cm
- ① Chrome 57031 19,90

Fixing rosettes

- ② for on-screwing 57036 6,70  
③ to let in 57038 6,70



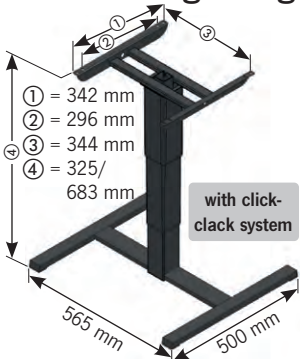
① **Table column** made of anodized aluminum. Length 70 cm, can be shortened, Ø 5,5 cm. Guarantees high stability and quick assembly and disassembly. Scope of delivery: 1 table leg, 2 installation joints, 12 screws. Weight 1,2 kg  
57165 64,90

② **Reinforced tripod** with increased stability. Allows the table to be set up and used outside the vehicle. Made of UV-resistant plastic. Weight 1,0 kg.  
57164 79,95





Freestanding lifting frames for motorhomes and caravans



Height 32.5 - 68.3 cm

Freestanding lifting frame

Height min. approx. 325 mm, max. approx. 683 mm. Height adjustable. Light, angular tubular cover. Simple operation. Color: Anthracite. 571210 235,-



249,-

Height 32 - 69.5 cm

Single-column lifting table frame

Height min. approx. 320 mm, max. approx. 695 mm. Height-adjustable, free-standing. Weight 11 kg. Color: cast grey, lift 375 mm. 571061 249,-

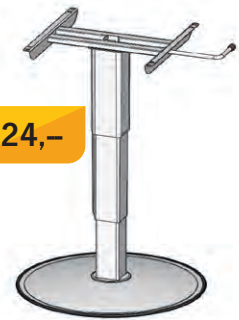


235,-

Height 32 - 68 cm

Freestanding lifting frame

Height min. approx. 320 mm, max. approx. 680 mm. Height-adjustable, more legroom thanks to slim tubular screen, easy to operate. Weight approx. 10 kg. Color: anthracite, lift 360 mm. 57121 235,-



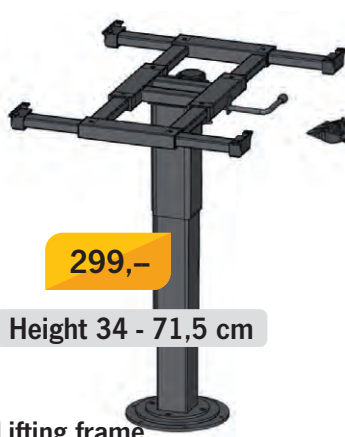
224,-

Height 32 - 69.5 cm

Freestanding lifting frame

Height min. approx. 320 mm, max. approx. 695 mm. Height-adjustable, more legroom thanks to slim tubular screen, weight approx. 10 kg. Color: cast-iron grey, lift 375 mm. 57122 224,-

Single-post lifting frames with twist and shift for motorhomes and caravans



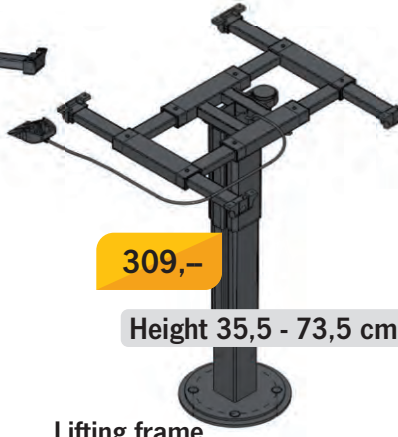
299,-

Height 34 - 71,5 cm

Lifting frame

Sliding tabletop, table rotation through 360°. Longitudinal displacement approx. 270 mm, transverse displacement approx. 235 mm. Weight approx. 12 kg. Color: anthracite, lift 375 mm. 57123 299,-

57123 299,-



309,-

Height 35,5 - 73,5 cm

Lifting frame

Height min. ca. 355 mm, max. approx. 735 mm, height-adjustable (push-button) and rotatable, transverse adjustment (ca. 190 mm) and longitudinal adjustment (ca. 235 mm). Light, angular tubular cover, color: anthracite. 57118 309,-

57118 309,-



289,-

Height 33,5 - 71,5 cm

Lifting frame

Height min. approx. 335 to max. approx. 715 mm, Height-adjustable (push-button) and rotatable, transverse adjustment (approx. 370 mm) and longitudinal adjustment (approx. 300 mm). Light, angular tubular cover, color: anthracite. 57119 289,-

57119 289,-



291,-

Height 34,2 - 71,2 cm

Lifting frame

Sliding tabletop, table rotation through 360°. Longitudinal displacement approx. 270 mm, transverse displacement approx. 230 mm. Weight approx. 12 kg. Color: anthracite, lift 370 mm. 57124 291,-

57124 291,-



365,-

Height 33,5 - 73,0 cm

Single-column lifting frame

Height min. approx. 355 mm, max. approx. 730 mm. Height-adjustable, rotatable; free-standing. Transverse and longitudinal displacement with central locking. Weight 13 kg. Color: Cast grey/black, Stroke 375 mm. 57116 365,-



369,-

Height 33,5 - 71,0 cm

Single-column lifting frame

Transverse and longitudinal displacement with central fixing, stroke 375 mm Adjustable from 335 mm - 710 mm, longitudinal displacement approx. 230 mm, transverse displacement approx. 180 mm. 57113 369,-

57113 369,-



New click-clack function

When converting the table frame from eating position to bed position, first pull the tabletop slightly upwards and then push it into the lowest position. From the bed position, simply pull the table frame up as far as it will go and then pull it down again by about 2 cm. The frame locks independently.

**Fixed columns for mobile homes and caravans**



**Rigid single-column table frame**

Sliding table top, table rotation through 360°. Longitudinal displacement approx. 330 mm, transverse displacement approx. 185 mm, weight approx. 5 kg. Color: cast grey, height 730 mm.

57125 298,50

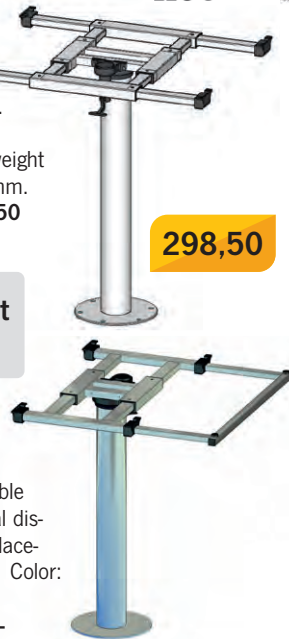
298,50

**extremely lightweight aluminum frame**

**Rigid single-column table frame**

Sliding table top and backdrop for fold-out table top. Table rotation through 360°. Longitudinal displacement approx. 215 mm, transverse displacement approx. 300 mm, weight approx. 5 kg. Color: old nickel, height 700 mm.

57161 314,-



folded in



Height folded out: 66,3 to 70,3 cm

**Lifting table frame in black**

- Folding mechanism
- Simple height adjustment
- Fixing to the floor possible
- Length 60 cm, foot width 59,3 cm
- Load capacity up to 100 kg

Lifting table frame in black, with folding mechanism by operating lever. Allows easy height adjustment from table to bed frame. Can also be fixed to the floor. Length: 60 cm, foot width 59,3 cm, height: 30,3 cm / 70,3 cm, weight 8,5 kg. Scope of delivery: lifting table frame (without table top), incl. floor fixation

57011 139,-

**Swivel-out table legs in 2 heights**

- Swivel-out mechanism for table extension through lower plate
- Subdivision of the foot for bed construction
- Color: silver + anthracite



Height to lower edge of upper tabletop 700 mm, locking point at 0°, 135°, 180°, 225° Silver 57163 118,50 Anthracite 57183 118,50

Height to lower edge of upper tabletop 756 mm, locking point at 0° Silver 57162 118,50 Anthracite 57184 118,50



**Two-column lifting table**

Transverse and longitudinal displacement with central fixing, stroke 375 mm, adjustable from 335 mm - 710 mm, longitudinal displacement approx. 250 mm, transverse displacement approx. 230 mm

57110 662,-

662,-

Height 33,5 - 71,0 cm



**① Lifting table frame**

Folding mechanism. Height 30 - 70 cm. Simple height adjustment. Length: 60 cm, foot width: 60 cm.

Light grey 57060 227,-  
Brown 570600 227,-  
Length: 75 cm, foot width: 60 cm.  
Light grey 57062 228,50  
Brown 570620 228,50  
Anthracite 570621 228,50

**② Table extension fitting**

The extendable fitting can be used to hold fold-out tabletops. When the tabletop is folded in, the fitting can be pushed back in. Aluminum, bronze anodized and black plastic, length: 250 mm

57025 10,95

**③ Height extension**

Level compensation up to approx. 8 cm per set.

Brown 570650 27,90

**④ Locking device for lifting table frame**

Prevents the table from slipping.

Light grey 57066 31,50  
Brown 570660 31,18

Height 30,0 - 70,0 cm



Height unfolded: 70 cm

In 2 lengths: 60 cm and 75 cm



**⑤ End caps for lift table foot** Spare part.








Made of plastic for metal lift table frame  
2 pieces 57069 12,-

**⑥ Pressure spring for metal lift table**

frame Spare part 570690 19,95













# LIFTING TABLE FRAMES


-  Small footplate
-  Large base plate
-  Stepless lowering
-  Height-adjustable, gas spring supported
-  Swivel base
-  Tabletop displacement
-  Can be screwed together



**REIMO**  
TOP PRICE  
333,-

- |   |   |  |  |
|---|---|--|--|
| <p><b>Height 35,0 - 71,0 cm</b></p>  <p><b>Single-column lifting table<br/>Primero Comfort HVD</b><br/>Color: silver-grey Stepless height adjustment from 350-710 mm, with plate adjustment, swivel base, can be screwed together. Weight: 12,3 kg<br/><b>570861      539,50</b></p> | <p><b>Height 34,5 - 70,5 cm</b></p>  <p><b>Single-column lifting table<br/>Primero Comfort HVK</b><br/>Color: silver grey Infinitely variable height adjustment from 345-705 mm, with panel - rigid sliding, can be screwed together. Weight: 10,9 kg<br/><b>570860      463,50</b></p> | <p><b>Height 32,5 - 68,5 cm</b></p>  <p><b>Single-column lifting table<br/>Primero Comfort HSK</b><br/>Color: silver grey Stepless height adjustment from 325-685 mm. Can be screwed to the base. Incl. swivel fitting. Weight: approx. 9,5 kg<br/><b>570862      333,-</b></p> | <p><b>Height 33,7 - 70 cm</b></p>  <p><b>Single-column lifting table<br/>Catch</b><br/>Color: Anthracite Stepless height adjustment from 337-700 mm. Freestanding. Incl. swivel fitting. Weight: approx. 13,4 kg<br/><b>57128      499,-</b></p> |
|---|---|--|--|

- |   |   |  |
|---|---|--|
|  <p><b>REIMO</b><br/>TOP PRICE<br/>304,-</p>  <p><b>Single-column lifting table Primero<br/>Comfort HPK</b><br/>Color: silver-grey Stepless height adjustment from 310-670 mm, can be screwed together. Weight: 7,7 kg<br/><b>570850      304,-</b></p> |   <p><b>Single-column lifting table Primero<br/>Comfort HPG</b><br/>Color: silver grey Stepless height adjustment from 315-675 mm, free-standing. Weight: 13,3 kg<br/><b>570851      377,-</b></p> |   <p><b>Single-column lifting table Catch</b><br/>Color: Anthracite Stepless height adjustment from 310-670 mm, free-standing. Weight: 13,6 kg<br/><b>57127      360,-</b></p> |
|---|---|--|



**LIPPERT**

① **VAN wall-mounted folding table**, height-adjustable  
600x460 mm 57003 358,-

② **Foldable table leg** anodized aluminium, height: 721 mm 57004 47,-

from 47,-

Dimensions: 721, 340, 460, 450



**zwaardvis**

**Sliding bracket**  
suitable for table column 57138, 57044, 57046.  
57137 66,50

**Sliding bracket**  
not suitable for table column 57191. One-handed operation, dimensions: 350 x 251 mm  
57040 119,-



**zwaardvis**


**Table frame Peugeot / Citroën floor rail or airline floor rail**

- Quick assembly by rotating the table column
- Freestanding
- With rotatable and separable plastic carrier

Table frame for floor rail, height 700 mm, table column (Ø60 mm) made of aluminium, anodized, ribbed. With rotatable and separable plastic support (diameter 190 mm). The table column can be removed from the floor rail by rotating it. Consists of table frame with plastic support. Total height with airline adapter 695 mm. Optional wall mounting (item no. 571915) available.

**Table frame for airline floor rail** 57169 208,-

**Table frame for Peugeot and Citroën floor rail** 57170 195,-



**zwaardvis**


① **Table column**  
for large table tops with swivel table support and anodized screw-on rosette on the base. Very stable, column Ø approx. 60 mm. Height approx. 67 cm  
57044 179,-

② **Retractable table column** Height adjustment by gas pressure damper from approx. 36,5 - 70,5 cm. Column Ø approx. 60 mm. Swivel table top support, for large table tops. Column goes approx. 12 cm through the floor  
57046 296,-

Height 67 cm

Height 36,5 - 70,5 cm

retractable



**zwaardvis**

④ **Quick Release table column**  
Freestanding, easily separable table base. The table leg can be easily detached and attached by turning the column. Table top height 69 cm, table top rotatable and removable. This frame is not suitable as a seat base.

③ **Complete table column set**  
consisting of: Base Ø 245 mm, H 15 mm, color grey (RAL 9006), powder-coated steel, Table column Ø 60 mm, frame height: 695 mm and table top support made of plastic.  
57191 219,-

Height 69,5 cm

⑤

**Freely configurable table column**

- ① **Base** Ø110 mm, visible plate only 3 mm high. Closure Ø 40 mm. Total installation depth of only 8 mm. Powder-coated steel  
571914 31,30
- Base** Ø 245 mm, H 15 mm, powder-coated steel
- ② **Grey** (RAL 9006) 571912 59,-  
**Black** (RAL 9005) 571913 59,-
- ③ **Table column**, anodized aluminium, ribbed, Ø 60 mm, not height-adjustable, L 680 mm  
571911 77,50
- ④ **Table top holder**, rotatable and removable, gray plastic. 571910 71,-
- ⑤ **Wall mounting clamp**, for Ø 60 mm column, plastic, black. Scope of delivery: 1 piece. Note: We recommend 2 pieces for mounting.  
571915 25,-



# LASHING RAILS / COVERING PROFILE / HOLDING AND LASHING EYES

## System rails and accessories - a secure hold for your equipment

Professional, high security, system rails for walls, corners and on the floor, light and compact, easy handling, high lashing strength, versatile accessories.

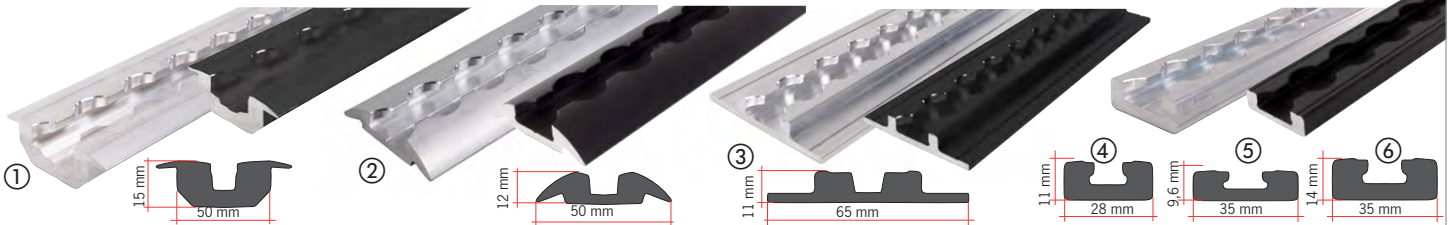


Fig.	Model	Use	Length	W x H mm	Weight	Art. no. silver	Price	Art. no. black	Price
①	Retractable corner rail	For corner mounting or recessed installation.	200 cm	49 x 16	2 kg	44301	89,90 GP*44,95 / 1 m	44594	97,- GP*48,50 / 1 m
②	Half-round screw-on rail	For wall and floor mounting. Rounded edges	200 cm	50 x 11,5	1,52 kg	44300	62,50 GP*31,25 / 1 m	44577	79,- GP*39,50 / 1 m
③	Extra wide rail	For screwing on or gluing. For wall and floor mounting.	200 cm	65 x 11	1,6 kg	44302	71,- GP*35,50 / 1 m	44592	84,20 GP*42,10 / 1 m
④	Extra narrow rail	For screwing on or recessing. For wall and floor mounting.	200 cm	28 x 11	0,9 kg	44596	61,- GP*30,50 / 1 m	44578	78,- GP*39,00 / 1 m
⑤	Narrow rail		200 cm	34,5 x 9,6	1,1 kg	44597	68,- GP*34,00 / 1 m	44579	75,80 GP*37,90 / 1 m
⑥	Narrow rail		200 cm	34,5 x 13,5	1,8 kg	44303	82,- GP*41,00 / 1 m	44593	90,- GP*45,00 / 1 m

## Fasteners for system rails ① to ⑥

<p><b>Aluminum Lashing plate for fitting</b> 300 daN, Ø44,5 mm, height 10,2 mm. May only be used with fitting 44320 or 44317. 44312 12,90</p>	<p><b>NEW</b> <b>Slot nut with 2 x M6 thread</b> Length: 40 mm, load capacity: 500 daN, can be used in all lashing rails 44613 4,90</p>	<p><b>NEW</b> <b>Lashing rail nut M8</b> is inserted into the lashing rail. Enables individual screw connections to the lashing rail. Scope of delivery: Stainless steel sheet and cast part M8 (without screw), set of 10 44607 10,90</p>	<p><b>NEW</b> <b>Spacer sleeves</b> So that the wall does not compress when screwed tight. Made of plastic. Ø24 mm, length: 28 mm, hole Ø: 8,4 mm per piece A5408453 7,50</p>
<p><b>Screw fitting with sheet metal nut M8</b> Clamping range 0-20 mm, galvanized steel 160 daN 44321 15,90</p>	<p><b>Screw with stop nut M8</b> Clamping range 0-54 mm, galvanized steel 500 daN 44322 13,20</p>	<p><b>NEW</b> <b>Heavy-duty screw fitting with M10 nut</b> Clamping range: 0-54 mm, load capacity: 2.000 daN 44612 59,90</p>	<p><b>Hook fitting</b> suitable for wall and ceiling rails, load capacity: 50 daN, do not use as a lashing point. 44325 22,60</p>

## Fittings

<p><b>Fitting eyelet</b> Load capacity 300 daN Ø inside: 29,5 mm 44320 8,40</p>	<p><b>Triangular eyelet</b> Load capacity 500 daN Ø inside: approx. 28 mm 44317 10,90</p>	<p><b>Automotive fitting galvanized steel with plastic retainer</b>, height: 65 mm, weight: 60 g, load capacity: 400 daN 44598 9,90</p>	<p><b>Double-stud fitting galvanized steel</b>, Height: 24,5 mm, weight: 140 g, load capacity: 1.100 daN 44599 11,90</p>	<p><b>Heavy duty ring eyelet</b> Load capacity: 100 daN 44324 28,70</p>
---	---	---	--	---

## Bicycle holder for lashing rails

**Bicycle holder**  
extendable 30-40 cm  
443012 99,-



**Bicycle holder for second bicycle** Can be combined with 443012 for a second bike. 443013 77,-



## ① Smooth cover profile

- Fits all grizzly, airline and lashing rails
- Prevents dirt deposits
- Quick and easy installation thanks to V-clip
- Perfect hold on flat and round airline rails

Cover profile for airline and lashing rails. Black, made of plastic, 2.5 m long, smooth. Not suitable for Mercedes-Benz V-Class, Vito and Viano. L 250 cm, W 3 cm, H max. 0,3 cm

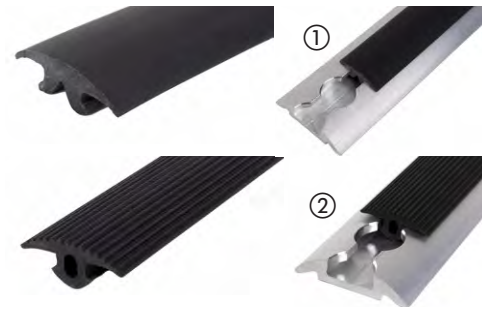
581650 GP\*7,16 / 1 m 17,90

## ② Corrugated cover profile

- Fits all airline and lashing rails
- Prevents dirt deposits

Cover profile for airline and lashing rails. Black, made of plastic, 2 m long, ribbed.

58188 GP\*12,99 / 1 m 25,99



## Lockable screw fitting with M8 nut

The M8 screw fitting can be positioned every 25 mm in the airline rail. Clamping range 0-27 mm. Load capacity: 500 daN, lockable.

44611 14,90



## Star grip

Suitable for M6 or M8 nut/screw due to hexagonal recess in the base (both not included). Scope of delivery: Star knob incl. cover cap. Color: black.

M6, Ø 30 mm 53141 3,90  
M8, Ø 32 mm 53139 6,-



Pictures show item 53141. Article 53139 is similar.



## Pallet stop

Pallet stop for 40 mm square tube. A ring makes it easy to operate the fittings (when inserting and removing). Can be positioned flush with the load thanks to double-sided design. Scope of delivery: right and left stopper

44610 28,90

## holder for rectangular tubes

Load capacity: 800 daN, with aluminum profile, for 65 mm squared timber or rectangular tubes

44326 40,20



## Locking brackets and lashing eyes



### Retaining eyelet kit

Stainless steel 35 x 30 x 20 mm , 4 pieces

44176 21,80

### Metal locking bracket, hole spacing 53 mm, 2 pcs.

29471 9,30  
29471L



Tab for D-ring, hole spacing 45 mm  
44315 3,20

Lashing plate, load capacity: 200 daN, height: 11 mm  
44316 3,60



Lashing recess, recessed installation with D-ring and strap, L: 104 mm, H: 12 mm

44313 13,95

Kit Eye Premium / Corner, 2 brackets for lashing with a practical quick-release fastener, for Fiamma Garage-Bars Premium and Garage-Bars Corner

441717 11,80



Lashing plate, load capacity: 200 daN, height: 11 mm  
44314 10,30



## Straps and elastic bands



Quick release Jet Rope with ratchet function for tents, wind protection and much more. Usable length approx. 1,90 m, max. load 30 kg

93649 7,90



Tensioning rubber with plastic hooks 1 piece  
60 cm 44221 4,10  
100 cm 44222 9,95



Clamping rubber with steel hooks, 1 piece, 60 cm 44219 2,15

## REIMO tension belts, loadable up to 150 kg

With sturdy metal buckle, width 2,5 cm. Price per piece.

Length 0,60 m for sleeping roofs 44208 5,10  
Länge 0,80 m for gas cylinders 740091L 5,30  
Länge 1,10 m for gas cylinders 74009 5,20  
Länge 2,20 m 44216 6,20  
Länge 6,00 m 44207 8,50  
Belt strap running meter without buckle 29443 1,45  
Buckle, for webbing 25 mm 29442 2,40





# FOR A LONG CAR LIFE - AUTOMOBILE UPHOLSTERY FABRICS



## Original automotive upholstery fabrics

meet the highest automotive-specific requirements defined by vehicle manufacturers for passenger cars and commercial vehicles, e.g: Extremely high abrasion resistance, high light resistance and low flammability.

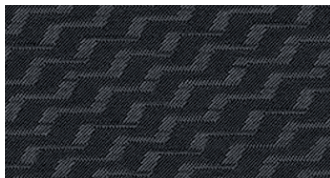
Easy to clean. These properties make these materials particularly suitable for continuous use and high loads, such as those that occur in a motorhome for everyday use.

## Standard upholstery fabrics for Volkswagen - for a long car life



**Place** standard fabric VW T5: 2009-2014, 1 mm foam-laminated. W 170 cm, 100% polyester

lm	<b>540255</b>	<b>64,90</b>
	GP* 38,18/ 1 sqm	
6 meters	<b>5402550</b>	<b>336,-</b>
	GP* 32,94/ 1 sqm	



**Tasamo** standard fabric VW T5, 4,5 mm foam-laminated. W 180 cm, 100% polyester

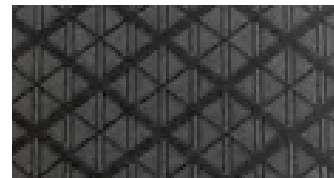
lm	<b>540256</b>	<b>69,90</b>
	GP* 38,83/ 1 sqm	
6 meters	<b>5402560</b>	<b>425,-</b>
	GP* 39,35/ 1 sqm	
10 meters	<b>5402561</b>	<b>679,-</b>
	GP* 37,72/ 1 sqm	



**Classic** VW T5, 3 mm, foam laminated, W 180 cm, 100% polyester

**Dark grey**

lm	<b>540257</b>	<b>35,90</b>
	GP* 35,90/ 1 sqm	
6 meters	<b>5402570</b>	<b>189,-</b>
	GP* 17,50/ 1 sqm	



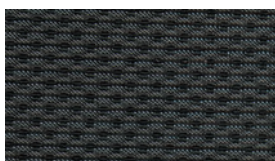
**Quadratic** standard fabric VW T5, 3 mm foam-backed, W 160 cm, 100% polyester

lm	<b>540250</b>	<b>32,90</b>
	GP* 20,56/ 1 sqm	
6 meters	<b>5402500</b>	<b>207,-</b>
	GP* 21,56/ 1 sqm	



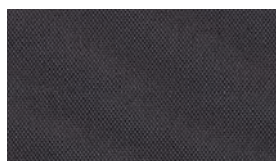
**Austin** standard fabric VW T6: 2015-2019, 3 mm foam-backed, W 180 cm, 100% polyester

lm	<b>540254</b>	<b>42,90</b>
	GP* 23,83/ 1 sqm	
6 meters	<b>5402540</b>	<b>210,-</b>
	GP* 19,44/ 1 sqm	
10 meters	<b>5402541</b>	<b>317,-</b>
	GP* 17,61/ 1 sqm	



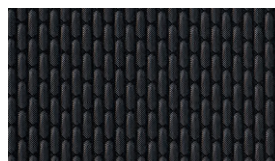
**Simora** standard fabric VW T6, 4,5 mm foam-backed, W 170 cm, 100% polyester

lm	<b>540258</b>	<b>56,90</b>
	GP* 33,47/ 1 sqm	
6 meters	<b>5402580</b>	<b>269,-</b>
	GP* 26,37/ 1 sqm	



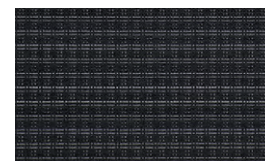
**Titan Black** series VW T6, 1 mm foam-backed, W 170 cm, 100% polyester

lm	<b>54023</b>	<b>31,90</b>
	GP* 18,76/ 1 sqm	
6 meters	<b>540230</b>	<b>164,-</b>
	GP* 16,08/ 1 sqm	
10 meters	<b>540231</b>	<b>274,-</b>
	GP* 16,12/ 1 sqm	



**Bricks** standard fabric VW T6.1: 2019-2024, 4 mm foam-laminated, W 175 cm, 100% polyester running meter

lm	<b>540253</b>	<b>35,90</b>
	GP* 20,51/ 1 sqm	
6 meters	<b>5402530</b>	<b>179,-</b>
	GP* 17,05/ 1 sqm	
10 meters	<b>5402531</b>	<b>255,-</b>
	GP* 14,57/ 1 sqm	



**Double Grid** VW T6.1 series, 3 mm foam-laminated. W 180 cm, 100% polyester

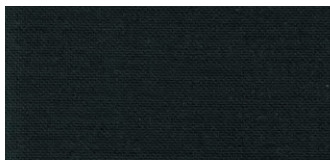
lm	<b>540259</b>	<b>35,90</b>
	GP* 19,94/ 1 sqm	
6 meters	<b>5402590</b>	<b>149,-</b>
	GP* 13,80/ 1 sqm	

## Upholstery fabrics for Renault Trafic



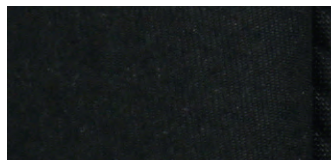
**Compo** series Renault Trafic approx. >2020, W 180 cm, 2 mm foam-laminated

lm	<b>54002</b>	<b>50,90</b>
	GP* 0,00/ 1 sqm	
6 meters	<b>540020</b>	<b>247,-</b>
	GP* 22,87/ 1 sqm	



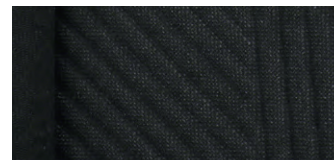
**Java Natte, black** series Renault Trafic approx. >2001, W 190 cm, 2 mm foam laminated,

lm	<b>54003</b>	<b>32,90</b>
	GP* 17,32/ 1 sqm	
6 meters	<b>540030</b>	<b>186,-</b>
	GP* 16,32/ 1 sqm	



**Black Uni** series Renault Trafic approx. >2015, W 180 cm, 2 mm foam laminated,

lm	<b>54021</b>	<b>50,90</b>
	GP* 28,28/ 1 sqm	
6 meters	<b>540210</b>	<b>266,-</b>
	GP* 24,63/ 1 sqm	
10 meters	<b>540212</b>	<b>427,-</b>
	GP* 23,72/ 1 sqm	



**Black Patterned** series Renault Trafic approx. >2015, W 180 cm, 1 mm foam-backed,

lm	<b>54020</b>	<b>61,90</b>
	GP* 38,69/ 1 sqm	
6 meters	<b>540200</b>	<b>321,-</b>
	GP* 29,72/ 1 sqm	
10 meters	<b>540203</b>	<b>519,-</b>
	GP* 28,83/ 1 sqm	

## Upholstery fabrics for Mercedes-Benz Vito



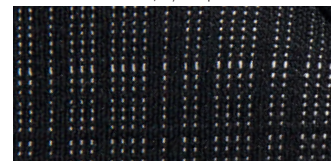
**Caluma** Original fabric for Sprinter, Vito >2018, W 165 cm, flat fabric made of polyester, polyurethane, nylon.

lm	<b>54088</b>	<b>66,90</b>
	GP* 44,60/ 1 sqm	
6 meters	<b>540880</b>	<b>299,-</b>
	GP* 30,20/ 1 sqm	
10 meters	<b>540881</b>	<b>484,-</b>
	GP* 29,33/ 1 sqm	



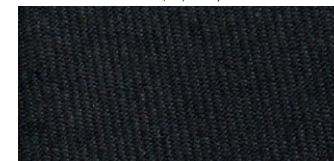
**Uni black** original fabric for Sprinter, Vito >2018, W 165 cm, flat weave in brushstroke look. 50% polyester, 50% polyacrylic.

lm	<b>54004</b>	<b>36,90</b>
	GP* 22,36/ 1 sqm	
6 meters	<b>540040</b>	<b>325,-</b>
	GP* 32,83/ 1 sqm	
10 meters	<b>540041</b>	<b>419,-</b>
	GP* 25,39/ 1 sqm	



**Tunja** original fabric for Sprinter, Vito: 2006 - 2018, W 182 cm, flat fabric made of 100% polyester

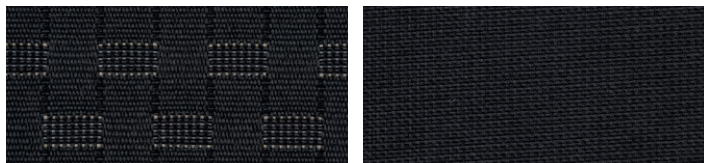
lm	<b>54016</b>	<b>52,90</b>
	GP* 29,07/ 1 sqm	
6 meters	<b>540160</b>	<b>283,-</b>
	GP* 25,92/ 1 sqm	



**Black** original fabric for Sprinter, Vito: 2006 - 2018, W 160 cm, flat fabric made of 100% polyester

lm	<b>54017</b>	<b>48,90</b>
	GP* 30,56/ 1 sqm	
6 meters	<b>540170</b>	<b>259,-</b>
	GP* 26,98/ 1 sqm	

## Upholstery fabrics for Ford Transit Custom <2023



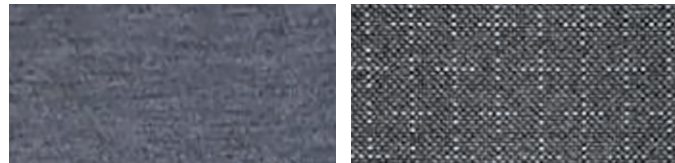
**Capitol Ebony**, Ford Transit / Tourneo Custom 2018 - 2022, width 190 cm, 3 mm foam laminated

lm	<b>540102</b>	<b>43,90</b>
	GP* 24,39/ 1 sqm	
6 meters	<b>5401020</b>	<b>227,-</b>
	GP* 19,91/ 1 sqm	
10 meters	<b>5401021</b>	<b>299,-</b>
	GP* 15,74/ 1 sqm	

**Ebony**, Ford Transit / Tourneo Custom 2018-2022, width 180 cm, 3 mm foam laminated \*\*

lm	<b>540100</b>	<b>26,90</b>
	GP* 14,94/ 1 sqm	
6 meters	<b>5401000</b>	<b>139,-</b>
	GP* 12,87/ 1 sqm	

## Upholstery fabrics for Ford Transit Custom V710 >08/2023



**Eton Nordic Blue**, width 190 cm, 3 mm foam-laminated

lm	<b>52067</b>	<b>44,90</b>
	GP* 0,00/ 1sqm	
6 meters	<b>520670</b>	<b>269,-</b>
	GP* 23,60/ 1 sqm	

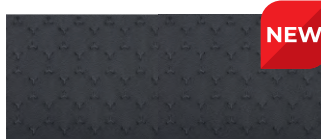
**Onyx Black**, Ford Transit / Tourneo Custom >2022, width 190 cm, 3 mm foam laminated

lm	<b>52066</b>	<b>32,90</b>
	GP* 0,00/ 1 sqm	
6 meters	<b>520660</b>	<b>199,-</b>
	GP* 17,46/ 1 sqm	
10 meters	<b>520661</b>	<b>329,-</b>
	GP* 17,32/ 1 sqm	

## Upholstery fabrics for Ford Tourneo Custom V710

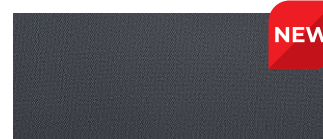
**Titanium Black Onyx**, patterned

lm	<b>54103</b>	<b>54,90</b>
	GP* 54,90/ 1 sqm	
6 meters	<b>541030</b>	<b>325,-</b>
	GP* 54,17/ 1 sqm	



**Titanium Black Onyx**, uni

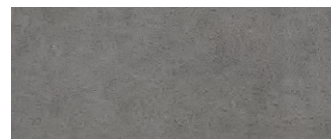
lm	<b>54104</b>	<b>54,90</b>
	GP* 54,9054,90/ 1 sqm	
6 meters	<b>541040</b>	<b>280,-</b>
	GP* 280,-46,67/ 1 sqm	



## Upholstery fabrics from the REIMO Van-Concept

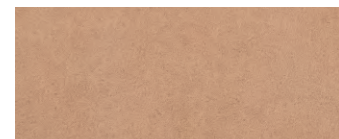
**New Wave** - width 140 cm

Soft, noble upholstery fabric with suede look. Durable and easy to clean. **Material:** 100% polyester, flame retardant, washable at 40°C. **Weight:** 730 g/lm. **Abrasion value:** **40.000 Martindale\***



**New Wave** light grey,

lm	<b>54037</b>	<b>31,90</b>
	GP* 22,79/ 1 sqm	
6 meters	<b>540370</b>	<b>196,-</b>
	GP* 23,33/ 1 sqm	



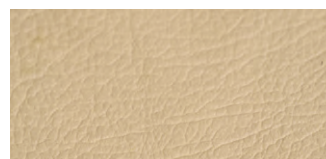
**New Wave** beige,

lm	<b>54036</b>	<b>31,90</b>
	GP* 22,79/ 1 sqm	
6 meters	<b>540360</b>	<b>196,-</b>
	GP* 23,33/ 1 sqm	

## Automotive leather

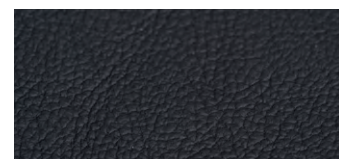
Noble and at the same time robust cover fabric in genuine leather. Durable and easy to clean. Flame retardant, lightfast level 6. Thickness 1,2 mm

**Material:** Genuine leather, **abrasion value:** **60.000 Martindale\***



**Leather beige**

1 m <sup>2</sup>	<b>540831</b>	<b>84,90</b>
	GP* 84,90/ 1 sqm	



**Leather black**

1 m <sup>2</sup>	<b>54083</b>	<b>78,90</b>
	GP* 78,90/ 1 sqm	
9 m <sup>2</sup>	<b>540830</b>	<b>549,-</b>
	GP* 61,00/ 1 sqm	

## Imitation leather in 3 quality levels

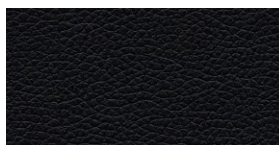
- Flame retardant
- Water repellent
- Usable width at least 140 cm
- Material surface 100% PU, underside 75% PES and 25% cotton

**Madryt:**

Weight 400 g/m<sup>2</sup> (+/- 10%), thickness 0,9 mm (+/- 3%)  
Abrasion resistance: 102.400 Martindale

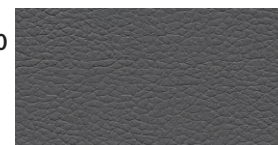
**Black**

lm	<b>51026</b>	<b>16,90</b>
	GP* 12,07/ 1 sqm	
6 meters	<b>510260</b>	<b>119,-</b>
	GP* 14,17/ 1 sqm	



**Slate**

lm	<b>51027</b>	<b>16,90</b>
	GP* 12,07/ 1 sqm	
6 meters	<b>510270</b>	<b>122,-</b>
	GP* 14,52/ 1 sqm	



**New Outlander:**

Weight 420 g/m<sup>2</sup> (+/- 10%), thickness 0,9 mm (+/- 3%)  
Abrasion resistance: 102.400 Martindale

**Brown**

lm	<b>51029</b>	<b>22,90</b>
	GP* 16,36/ 1 sqm	
6 meters	<b>510290</b>	<b>154,-</b>
	GP* 18,33/ 1 sqm	
10 meters	<b>510291</b>	<b>239,-</b>
	GP* 17,07/ 1 sqm	



**Santiago:**

Weight 450 g/m<sup>2</sup> (+/- 10%), thickness 0,95 mm (+/- 3%)  
Abrasion resistance: 51.200 Martindale

**Cognac**

6 meters	<b>510430</b>	<b>149,-</b>
	GP* 17,74/ 1 sqm	
10 meters	<b>510431</b>	<b>233,-</b>
	GP* 16,64/ 1 sqm	



**\*Martindale method** The most frequently used method to determine the abrasion resistance of textile fabrics, especially upholstery fabrics.



	soft padding	hard padding
Private use	>10.000 Martindale	15.000 Martindale
Office use	25.000 Martindale	35.000 Martindale
Public local public transport	>30.000 Martindale	40.000 Martindale

You can find more upholstery fabrics/leather upholstery in various packaging units at: [www.reimo.com](http://www.reimo.com)



# HIGH QUALITY FOAMS - MANY YEARS IN SERIAL PRODUCTION

Our hard-working colleagues in the REIMO sewing room



from 136,-

## Foam boards

As raw material for self-cutting (e.g. with electric meat knife) for upholstery group. Volume weight 35kg/m<sup>3</sup>.

200 x 150 x 4 cm	GP* 1133,33 / 1 cbm	<b>55007</b>	<b>136,-</b>
200 x 150 x 6 cm	GP* 1222,22 / 1 cbm	<b>55008</b>	<b>220,-</b>
200 x 170 x 7 cm	GP* 1129,17 / 1 cbm	<b>55016</b>	<b>271,-</b>
200 x 150 x 8 cm	GP* 1004,17 / 1 cbm	<b>55002</b>	<b>241,-</b>
200 x 170 x 8 cm	GP* 1188,89 / 1 cbm	<b>55003</b>	<b>321,-</b>
200 x 150 x 10 cm	GP* 1173,33 / 1 cbm	<b>55004</b>	<b>352,-</b>
200 x 170 x 10 cm	GP* 1155,88 / 1 cbm	<b>55005</b>	<b>393,-</b>

## Special foam

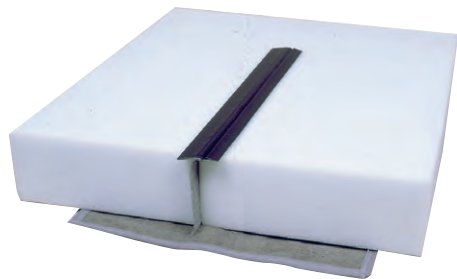
Ideal for SD bed VW T4

108 x 187 x 4 cm	GP* 1962,50 / 1 cbm	<b>21129</b>	<b>157,-</b>
------------------	---------------------	--------------	--------------

## Foam 2-hardness

With different degrees of hardness for the lower (hard) and upper range (soft)

200 x 150 x 10 cm	GP* 1310,00 / 1 cbm	<b>55022</b>	<b>393,-</b>
-------------------	---------------------	--------------	--------------



## Pull-in strip

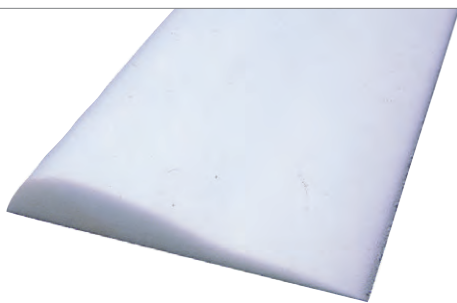
For high-quality quilting; is sewn on the inside with a quilting seam, pulled through the slit foam and tensioned. The cover tightens in this area, resulting in a clear visual contrast to the quilting seam.

**Piece, 360 mm long**

GP\* 8,19 / 1 sqm

**54910**

**2,95**



## Thigh padding 124 x 18 cm

For gluing to the front edge of the seat. You sit more comfortably and achieve a professional look, especially if you use pull-in strips.

GP\* 67,73 / 1 sqm

**59130**

**14,90**

①



②



Danger  
Concerns both articles

## ① Power spray adhesive Plus

Heat resistant up to 110°C. Adheres to wood, metal and plastics and for X-Trem®.

400 ml GP\* 42,37 / 1 liter **500130 16,95**

Danger: H222, H229, H315, H336, H411

## ② Spray adhesive

Like above, but heat-resistant up to 70°C

500 ml GP\* 29,00 / 1 liter **50011 14,50**

Danger: H222, H229, H315, H336, H411

GP\* = Base price per specified unit

### Velcro and adhesive tapes

Ideal for attaching cushions to folding benches or U-shaped seating groups.

#### Velcro tape - adhesive + fleece

Width 20 mm, length 5 m

White	GP* 2,18/ 1 m	<b>563003</b>	<b>10,90</b>
White, self-adhesive	GP* 3,38/ 1 m	<b>56305</b>	<b>16,90</b>
Black, self-adhesive	GP* 3,38/ 1 m	<b>56317</b>	<b>16,90</b>
Black, self-adhesive and heat-resistant up to 120°C	GP* 4,38/ 1 m	<b>56319</b>	<b>21,90</b>

#### Special Velcro strap

Front side adhesive band, back fleece band.

B 20 mm, L 5 m, black	GP* 1,38/ 1 m	<b>56310</b>	<b>6,90</b>
-----------------------	---------------	--------------	-------------

#### Adhesive tape - Velcro side. For mosquito nets

Black and self-adhesive

B 20 mm, L 5 m	GP* 2,38/ 1 m	<b>56324</b>	<b>11,90</b>
W 50 mm, L 5 m	GP* 2,38/ 1 m	<b>563290</b>	<b>11,90</b>

#### Fleece tape - self-adhesive

W 10 mm, L 5 m, grey	GP* 2,98/ 1 m	<b>56334</b>	<b>14,90</b>
W 50 mm, L 5 m, black	GP* 6,38/ 1 m	<b>563300</b>	<b>31,90</b>

#### Velcro and adhesive discs. For fixing upholstery, black

Adhesive disk Ø 35 mm, 10 pieces	GP* 0,89/ 1 piece	<b>56326</b>	<b>8,90</b>
Adhesive disc Ø 35 mm, 50 pieces	GP* 0,60/ 1 piece	<b>563253</b>	<b>29,90</b>
Fleece disk Ø 35 mm, 10 pieces	GP* 0,89/ 1 piece	<b>563252</b>	<b>8,90</b>
Fleece disk Ø 35 mm, 50 pieces	GP* 0,60/ 1 piece	<b>563254</b>	<b>29,90</b>



#### Velcro tapes

Consisting of rough adhesive tape and soft fleece tape. For joining different materials. REIMO recommends heat-resistant Velcro tape on sheet metal in vehicles. Single adhesive tapes are good for holding somewhat rougher upholstery fabrics on seat boxes. Normally, Velcro tapes are stapled to the substrate. For metal sheets and hard surfaces, use self-adhesive Velcro tape. Curtains can be gathered with the special Velcro tape, for example.

#### Endless zippers running meter

① 5 meters light grey, 3 mm	GP* 3,38 / 1 m	<b>550500</b>	<b>16,90</b>
5 meters black, 3 mm	GP* 3,78 / 1 m	<b>550531</b>	<b>18,90</b>
② 5 meters black, 5 mm	GP* 1,98 / 1 m	<b>550560</b>	<b>9,90</b>
5 meters rust brown, 5 mm	GP* 1,18 / 1 m	<b>550630</b>	<b>5,90</b>

#### Zipper for zippers yard goods

③ Chrome-plated 3 mm, for 550500 and 550531			
5 piece	GP* 0,24 / 1 piece	<b>550551</b>	<b>1,20</b>
10 piece	GP* 0,26 / 1 piece	<b>550552</b>	<b>2,60</b>
Double zipper black 5 mm, for 550561			
5 piece	GP* 0,00 / 1 piece	<b>550572</b>	<b>9,70</b>
10 piece	GP* 1,89 / 1 piece	<b>550573</b>	<b>18,90</b>

#### Zippers fixed lengths, 100% polyester, rot-proof

L 90 cm, grey, divisible	GP* 7,67 / 1 m	<b>55051</b>	<b>6,90</b>
L 170 cm, grey, divisible	GP* 5,82 / 1 m	<b>55052</b>	<b>9,90</b>
④ Double zipper			
L 175 cm, white, divisible	GP* 7,94 / 1 m	<b>55061</b>	<b>13,90</b>
L 210 cm, white, divisible	GP* 7,57 / 1 m	<b>55062</b>	<b>15,90</b>



### Isoflex thermal mat film for sewing yourself

① Isoflex thermal mat film, 8-ply			
W 160 cm, grey. Aluminum vaporized on the outside, for better sun reflection, 5 meters	<b>373650</b>	<b>77,95</b>	
	GP* 9,74/ 1 sqm		
10 meters	<b>373651</b>	<b>149,-</b>	
	GP* 9,31/ 1 sqm		

② Edging tape 40/20			
10 meters grey	<b>559200</b>	<b>7,90</b>	
	GP* 0,79/ 1 sqm		
50 meters grey	<b>559201</b>	<b>29,90</b>	
	GP* 0,60/ 1 sqm		
10 meters black	<b>5592070</b>	<b>7,90</b>	
	GP* 0,79/ 1 sqm		
50 meters black	<b>5592071</b>	<b>29,90</b>	
	GP* 0,60/ 1 sqm		

③ Eyelets with discs for inserting the suction cups into fabric			
14 mm	<b>90211</b>	<b>14,95</b>	
11 mm	<b>90210</b>	<b>11,90</b>	

④ Push buttons for screwing on			
10 pcs.	<b>56230</b>	<b>18,94</b>	

⑤ Suction cup			
10 pcs., 40 mm	<b>37277</b>	<b>7,95</b>	
10 pcs., 50 mm, grey	<b>37011</b>	<b>8,95</b>	
10 pcs., 50 mm, black	<b>37012</b>	<b>7,95</b>	



#### Do it yourself kit

- 7-layer Isoflex material
- Insulation against heat and cold, reflection of the sun's rays
- The ideal privacy screen
- Simple customization and assembly
- Attachment with suction cups

**Make your own thermal mat.** Use the enclosed foil to make a template, place it on the material and cut it out. Baste the edges of the thermal mat and finish with binding tape. Insert the suction cups, done. (For optimum insertion of the suction cups, purchase an eyelet set 14 mm Art. no. 90211)

**Scope of delivery:** 3,5 m Isoflex material, 1,55 m wide, 30 suction cups 30 m edging tape incl. 1 plastic film for making a template.

**37285 73,95**

GP\* = Base price per specified unit



# CURTAINS AND ACCESSORIES



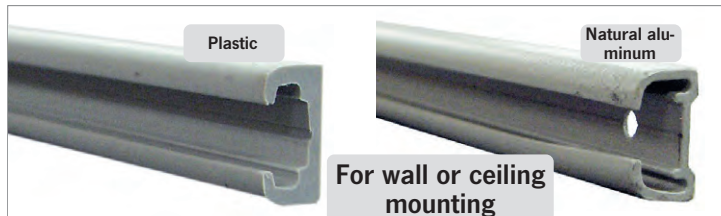
## Curtain fabric JU - soft flowing

Opaque and durable super quality. Gray patterned.  
Material: **100% polyester**, flame retardant. (DIN B1/M1)  
Fabric width **1,40 m**.  
10 meters GP\* 17,43/ 1 sqm **540340** **244,-**  
20 meters GP\* 16,29/ 1 sqm **540341** **456,-**



## Tension fabric

e.g. for covering the back of benches. **100% cottonflame** retardant.  
Fabric width **160 cm**.  
10 meters grey GP\* 9,00/ 1 sqm **540820** **144,-**  
20 meters grey GP\* 8,41/ 1 sqm **540821** **269,-**  
10 meters black GP\* 7,44/ 1 sqm **540810** **119,-**  
20 meters black GP\* 8,72/ 1 sqm **540811** **279,-**



Plastic

Natural aluminum

For wall or ceiling mounting

## Curtain tracks C-profile

Without sharp edges. Manufactured in accordance with the new safety regulations for cabs.

Plastic curtain rail, L 220 cm, grey **56130** **15,90**

GP\* 7,23 / 1 m

Curtain rail aluminum natural, L 260 cm **56105** **23,90**

GP\* 9,19 / 1 m

## Joint glider

100 pieces **561100** **19,90**

GP\* 0,20 / 1 piece

## Locking device

6 pieces **561111** **4,90**

GP\* 0,82 / 1 piece

1 piece **56111** **0,60**



do not install in the header area

Single track - small Radii possible

## Curtain tracks T-profile

250 cm, single track, white plastic **56122** **6,90**

GP\* 2,76 / 1 m

500 cm, single track, white plastic **561220** **2,90**

GP\* 0,58 / 1 m

## Glider

20 pieces **56124** **3,90**

GP\* 0,20 / 1 pc.

**56124L** **0,50**

## Locking device

6 pieces **56125** **4,90**

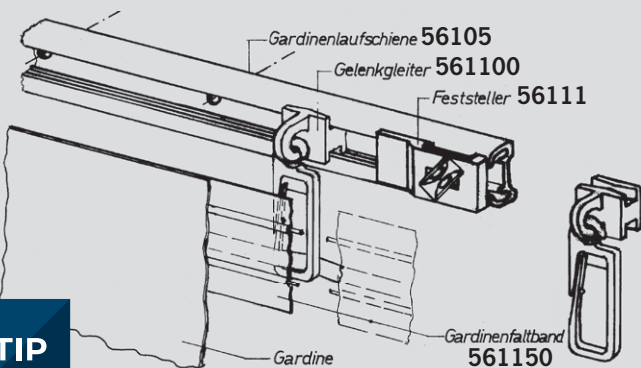
GP\* 0,82 / 1 piece

**56125L** **0,60**



## Curtain width

Professionals add **20%** to the window width when determining the curtain width. The height depends on the mounting point above the window. Split curtains can be easily joined with press studs or Velcro tape.



TIP

## Curtain pleating tape

22 mm wide. 100% polyester. Transparent

10 meters **561150** **5,90**

GP\* 0,59 / 1 m

50 meters **561151** **25,90**

GP\* 0,52 / 1 m

200 meter roll **561152** **87,90**

GP\* 0,44 / 1 m

## Curtain latch

holds the retracted curtain. Made of sturdy plastic. Light grey

2 pieces **561201** **4,90**

## Glides for curtain rails

For box rails

① 20 pieces **56127** **3,90**

GP\* 0,20 / 1 piece

**56127L** **0,60**

## Locking device for curtain rails

For box rails

② 6 pieces **56128** **4,90**

GP\* 0,82 / 1 piece

**56128L** **0,90**

**Mosquito net: particularly tight and sturdy**

Rot-proof plastic fabric. Can be attached anywhere with Velcro or press studs. Reliable protection against mosquitoes and vermin. Even small mosquitoes stay outside. It is best to use Velcro fasteners for a tight connection. Flame-retardant black version.

**Mosquito net, black, 1,45 m wide.**

5 meters	<b>56019</b> GP* 9,92/ 1 m	<b>71,95</b>
20 meters	<b>560242</b> GP* 9,41/ 1 m	<b>273,-</b>



REIMO uses this quality for the lifting and sleeping roof mosquito nets

**Curtain fastening with spiral tape (Spannfix)**

**Complete set for attaching curtains**

For estate cars. Complete set for fastening your curtains in motorhomes, caravans, etc. Sufficient for 5 windows in a minibus.

Accessories supplied: 10 pieces of mounting set for Spannfix, 10 pieces of curtain pullers, 10 pieces of press studs and the Spannfix.

<b>12 m Spannfix</b> Light grey + accessories	<b>56250</b>	GP* 5,25 / 1 m	<b>62,98</b>
<b>15 m Spannfix</b> Light grey + accessories	<b>56251</b>	GP* 0,00 / 1 m	<b>64,90</b>

**Spannfix set for fixing curtains**

<b>10 m Spannfix, 20 eyelets</b>	<b>56253</b>	GP* 0,00 / 1 m	<b>20,90</b>
----------------------------------	--------------	----------------	--------------



**Curtain fastening set**  
Supplied without fabric

from **20,90**

**Spannfix by the meter**

Spiral tape light grey, 10 meters	<b>562200</b>	GP* 2,59 / 1 m	<b>25,90</b>
Spiral tape light grey, 50 meters	<b>562201</b>	GP* 2,28 / 1 m	<b>114,-</b>

562200 / 562201

**Spannfix fasteners**



**Mounting without wall clearance**

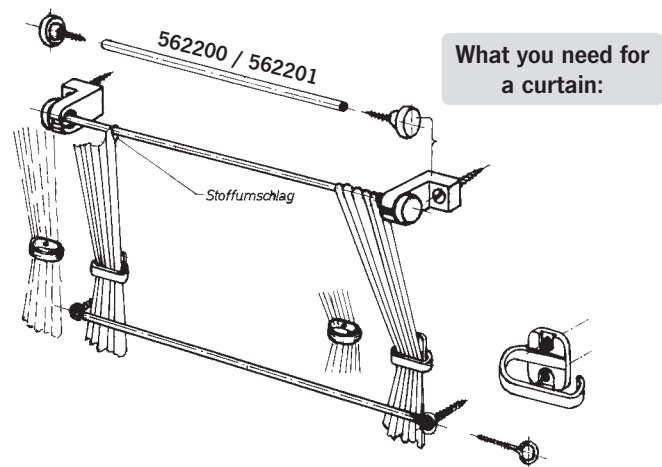
Hook or eye bolts for screwing into the Spannfix ends. The eyelet hole allows the Spannfix to be attached directly to the wall.

Eyelets, 10 pieces	<b>56225</b>	<b>3,60</b>
	<i>56225L</i>	
Hooks, 10 pieces	<b>56226</b>	<b>3,60</b>
	<i>56226L</i>	

**Mounting with wall clearance**

Elegant wall mounting for the tension fix tape. Keeps the curtain at a distance from the wall. Plastic brackets and special screws for screwing into the Spannfix ends.

Light grey, 4 pieces	<b>562101</b>	<b>3,60</b>
----------------------	---------------	-------------

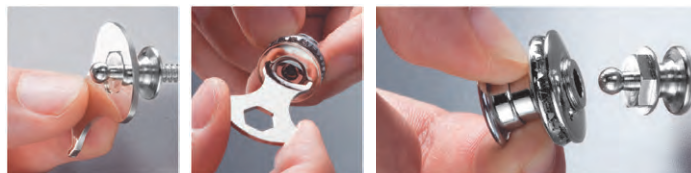


What you need for a curtain:

**LOXX safety push-buttons by Hindermann**

The clever security push-button with triggering self-locking mechanism for almost all applications and extreme loads.

set of 2	<b>373831</b>	<b>24,50</b>
set of 5	<b>373830</b>	<b>39,-</b>



**LOXX push-buttons**

for fastening fabric, tent fabric, insulating mats, mosquito nets, etc., incl. tool, 5 pieces silver,	<b>37383</b>	<b>21,50</b>
nickel-plated	<b>37384</b>	<b>34,75</b>
Black		

**Push-buttons**

for attaching curtains and mosquito nets in the vehicle. Tools included.		
10 pieces	<b>56230</b>	<b>18,94</b>