

# Interior design





# TABLE FRAMES AND FLOOR PLATES

**CARBEST**  
INNOVATIONS FOR MOBILE LIFE

## Lifting table frame in black

- Folding mechanism
- Simple height adjustment
- Fixation to the floor possible
- Length 60 cm, foot width 59.3

Lifting table frame in black, with folding mechanism by operating lever. Allows easy height adjustment from table to bed frame. Can also be fixed to the floor. Length: 60 cm, foot width 59,3 cm, height: 30,3 cm / 70,3 cm, weight 8,5 kg. Scope of delivery: lifting table frame (without table top), incl. floor fixation.

Available as of Q3/2023

57011

135,-



folded  
together



**NEW**  
2023

Height folded out:  
66.3 to 70.3 cm



## ① U-swivel table comfort

as 57126, but with additional swivel range of 30 cm due to curved table column.

57120 101,-

You can find more table frames on page 716



## Floor panels

- Modern designs
- Haptically pleasant, textured top layer
- Anti-slip
- Easy to clean
- Water resistant OSB core board
- Easy to work with wood tools

Ca. 10 mm thick, made of waterproof glued chipboard coated with plastic flooring.

## ② Tessin

Vinyl, robust wear layer, insensitive to minor damage

340 x 180 x 0,95 cm	10539	499,-
300 x 170 x 0,95 cm	10538	379,-
250 x 170 x 0,95 cm	10537	359,-

You will find more designs on page 698

Soundproofing and insulation mats .....	688	Drawer and heavy duty pullouts .....	708 – 709
Interior trim fabrics/panels .....	689 – 693	Roller shutter doors/pharmacy pullout .....	710
Furniture panels .....	694 – 695	Lift tables .....	711 – 713
Edge protection/bander .....	696 – 697	Table columns and table feet .....	714 – 715
Floor panels .....	698	Table slide rails/swivel table frames .....	716
Furniture Handles/Push Locks .....	699 – 701	Tools/carts .....	717
Bracket handles/locks/flap dampers .....	702	Upholstery fabrics/automotive leather .....	718 – 719
Furniture hinges .....	703 – 704	Foams/Velcro straps/Zipper .....	720 – 721
Furniture construction components .....	705 – 706	Curtains & Accessories .....	722 – 723
Ventilation grille .....	707		

# FOR A BETTER LIVING CLIMATE - VAPOR-TIGHT AND SOUND VEHICLE INSULATION



from **14,20**

Thermal conductivity  
value: X-trem isolator®  
0,020–0,035

## X-trem-Isolator® Classic\*

Color: Black. Plate size ca. 1 x 2 m, price per plate:

Thickness 5 mm	GP 7,10/1 qm	500020	14,20
Thickness 10 mm	GP 7,70/1 qm	50015	15,40
Thickness 15 mm	GP 11,97/1 qm	50016	23,95
Thickness 18 mm (ideal for floor insulation)	GP 14,60/1 qm	50009	29,20
Thickness 20 mm	GP 15,45/1 qm	50017	30,90
Thickness 30 mm	GP 23,95/1 qm	50018	47,90

**Rolls** ca. 20 mm thickness. Price per linear meter.

1.45 m roll width (ca.)	GP 22,00/1 qm	50022	31,90
-------------------------	---------------	-------	-------

## X-trem-Isolator® self-adhesive\*

- Self-adhesive even more convenient to lay

Black color. Heat resistant up to 120°, adhesive layer covered with protective film. Plate size ca. 1 x 2 m, price per plate:

Thickness 10 mm,	GP 19,25/1 qm	50000	38,50
Thickness 20 mm,	GP 24,20/1 qm	50001	48,40

## X-trem-Isolator® Soft\*

- Further development of the proven X-trem insulator
- Slip-resistant, Odorless and significantly softer

Color: Black. Plate size ca. 1 x 2 m, price per plate:

Thickness 10 mm	GP 10,75/1 qm	50095	21,50
Thickness 20 mm	GP 20,85/1 qm	50094	41,70

## X-trem-Isolator® Soft Self-adhesive\*

Thickness 10 mm	GP 21,25/1 qm	50097	42,50
Thickness 20 mm	GP 27,35/1 qm	50096	54,70

# Reimo X-Trem Isolator®

- Proven at Reimo for over 30 years
- X-trem insulator does not absorb moisture
- Extremely flexible (360°), hugs the car body perfectly
- Largely harmless from a building biology point of view
- Non-squeaking, anti-drumming, resistant to most solvents and high temperatures
- Made of closed-cell foamed polyethylene
- High heat insulating
- Extremely light

Extremely easy to edit  
(e.g. with blade knife.  
The insulator does not tear,  
does not fray and  
does not fiber either.)



Insulation materials in comparison	Thermal conductivity value, the smaller the better (W/M x K)	Diffusion resistance coef-ficient	Price factor to PY at 40 mm
X-trem isolator	0,020–0,035	vapor-tight	+ 4,0
Polystyrene	0,025–0,040	20–300	0
Polyuretan	0,025–0,035	30–100	+ 3,0
Mineral fiber	0,035–0,050	1	+ 0,0–2,5
Baking cork	0,045–0,055	10–20	+ 4,5–6,0



For gluing we recommend Super Spray Adhesive 50013. You will need ca. 1 can/panel (2m²) - for flat bonding. Working temperature should not be below 15°C. Colors, dimensions and density of the sheets may vary slightly due to production. We recommend a trial bonding (without guarantee).

\*Shipping only possible by forwarding agency, for panel thickness 10 - 30 mm freight/packing Stacking height 10-32 cm pallet 55,99 / 8,- Stacking height 33-200 cm 108,99 / 8,-

Shipping from the Reimo warehouse is done by freight forwarding. For smaller quantities, please ask your dealer at what cost he can get the plates and ship them to you, if necessary.

## Now also available as cut-to-size sets:

**Insulation set for VW T5, T6 station wagon kR and IR**

28 parts. 2 plates 20 mm X-Trem **50086 159,-**

**Extension set for VW T5, T6 panel van kR**

8 parts. 1 plate 20 mm X-Trem **500861 89,90**

**Mercedes-Benz Vito VS 20 station wagon long version (length 5.14 m)**

13 parts. 2.5 plates 15 mm X-Trem **50087 219,-**



Tailgate



Left side



Right side

# CARBEST

INNOVATIONS FOR MOBILE LIFE



Use in small strips to  
reduce vibration

## X-Trem® Noise Regulator self-adhesive sound insulation

- Odorless
- Aluminum butyl, 2 mm thick, aluminum coated
- Without bitumen, not mixed with petroleum or asphalt
- Excellent noise insulation and soundproofing
- Heat reflective
- Self-adhesive with strong surface adhesion
- Processing possible from 5°C.

Temperature resistant from -30°C to +80°C

Adhesive layer covered with protective film.

100 x 50 cm	GP 29,00/1 qm	50098	14,50
500 x 40 cm	GP 24,95/1 qm	50099	49,90



from **14,50**

## Special adhesive for X-Trem isolator



①



②



Danger  
Concerns both articles

## Power spray adhesive

Bonding to wood, metal and plastics as well as X-trem.

① **400 ml**, heat resistant up to **110°C**  
GP\* 42,37/ 1 Liter **500130 16,95**

② **500 ml**, heat resistant up to **80°C**  
GP\* 50,78/ 1 Liter **50013 25,39**

Danger: H222, H229, H315, H336, H411



## Cladding with velour fabrics



Isovelours gray



### Isovelours, back coated with foam. Beige or gray.

Ideal as wall/roof cladding or for covering cladding panels (not recommended for the kitchen area due to the textile-like surface). 100% polyamide.

Gray, thickness 2 mm, width 140 cm			
10 m	<b>510140</b>	GP* 22,50/1 qm	<b>225,-</b>
20 m	<b>510141</b>	GP* 22,60/1 qm	<b>452,-</b>

Gray, thickness 4 mm, width 140 cm			
10 m	<b>510250</b>	GP* 11,60/1 qm	<b>116,-</b>
20 m	<b>510251</b>	GP* 11,60/1 qm	<b>232,-</b>

Beige, Thickness 3 mm, Width 140 cm			
10 m	<b>5100960</b>	GP* 22,50/1 qm	<b>225,-</b>
20 m	<b>5100961</b>	GP* 23,10/1 qm	<b>462,-</b>

Gray, thickness 5 mm, width 160 cm			
10 m	<b>510170</b>	GP* 12,60/1 qm	<b>126,-</b>
20 m	<b>510171</b>	GP* 12,55/1 qm	<b>251,-</b>

**Isovelours, back additionally coated with non-woven fabric,**  
i.e. adhesive does not strike through so quickly visible on the front side. 100% polyamide.

Gray, Thickness 3 mm, Width 155 cm			
10 m	<b>510160</b>	GP* 32,40/1 qm	<b>324,-</b>
20 m	<b>510161</b>	GP* 32,30/1 qm	<b>646,-</b>



Intervelours

### Intervelours Graphite

3 mm thick flexible needle fleece for sticking or covering vehicle parts. Crease-resistant, insensitive. Décor Graphite

50 x 1,91 m	<b>51020</b>	GP* 13,54/1qm	<b>1293,-</b>
5 x 1,91 m	<b>510201</b>	GP* 14,87/1 qm	<b>142,-</b>



Wheel arch trim with  
intervelours

GP\* = base price per specified unit

## Trinity - Interior trim fabric in noble quilted look

- Velvety fabric, nice touch
- With embossed quilted look
- Reduced moisture absorption
- Flame retardant equipped

Material: 100 % polyester,  
weight: 355 g/m (+/- 5 %),  
useful width ca. 142 cm

Beige color			
10 m	<b>510370</b>	GP* 12,90/1 qm	<b>129,-</b>
20 m	<b>510371</b>	GP* 12,95/1 qm	<b>259,-</b>

Color gray			
10 m	<b>510380</b>	GP* 13,30/1 qm	<b>133,-</b>
20 m	<b>510381</b>	GP* 13,25/1 qm	<b>265,-</b>

Color black			
10 m	<b>510390</b>	GP* 13,30/1 qm	<b>133,-</b>
20 m	<b>510391</b>	GP* 13,25/1 qm	<b>265,-</b>



## Fancy - interior trim fabric

- Anthracite with 4 mm foam and tricot
- Weight 260 g/m<sup>2</sup> +/- 5 %
- Material 100 % PES
- Water repellent
- Useful width min. 140 cm

10 m	GP* 11,60/1 qm	<b>510250</b>	<b>116,-</b>
20 m	GP* 11,60/1 qm	<b>510251</b>	<b>232,-</b>



GP\* = base price per specified unit



## Tips and tricks for vehicle insulation

### Preliminary work:

Your vehicle has been prepared to the extent that you can start with the first steps for insulation. Interior panels have been dismantled, cut-outs have been made for later fixtures, such as windows, electrical outlets, etc. The side walls of your vehicle must be clean, dry and free of grease.

### Insulation:

For insulation we recommend our X-trem insulator. Advantages over other insulating materials: It can be cut excellently with a sharp knife. It is also flexible and can be adapted well to the cur-

atures of the vehicle body. Other advantages: Very high insulation even at low material thicknesses (saves space and weight), closed-pored (cannot absorb water) and also flame retardant from 15 mm thickness.

First, cut a few pieces of the X-Trem insulator to the desired size. Keep in mind that if the surface is difficult to access, the insulator piece including the adhesive must be attached later. Now, using a brush or a fine toothed spatula, paint the cut parts of the X-trem insulator with One-component adhesive (Art. No. 50036).

Then apply the adhesive to the side wall or ceiling with a brush.

Both surfaces must always be coated. Furthermore, the bonding must be carried out over a wide area so that there is no air space between the vehicle panel and the X-trem insulator. This shifts the dew point into the insulation and thus prevents condensation. After the adhesive has been applied and allowed to flash off, the X-trem is fitted.

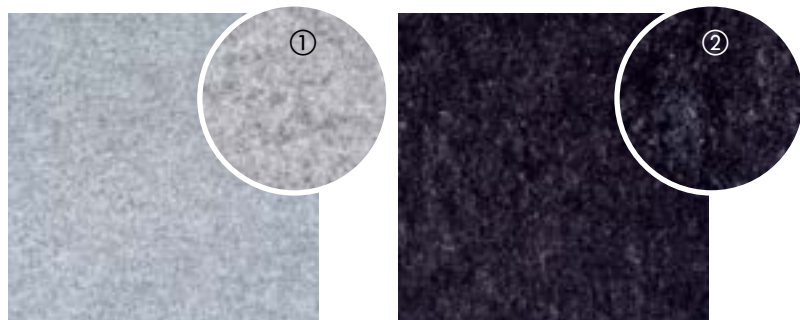
Press the X-trem insulator on correctly at all points, as it is not the duration of pressing that is

decisive for the adhesive force, but the amount of pressure applied. Proceed in the same way with the wall and ceiling. When using the X-trem insulation material on the floor, the X-trem insulator is not glued, but only placed under the floor panel. If you follow this advice, you will have a cooler vehicle in the summer and a warmer one in the winter, with insulation exceptionally the principle: Much helps much !!!

More info: [www.reimo.com](http://www.reimo.com)



## INTERIOR CLADDING PANELS / FABRICS



### V-Flex plate

- Sound absorbing and breathable
- Lightweight, pleasant feel
- Can be cut to size

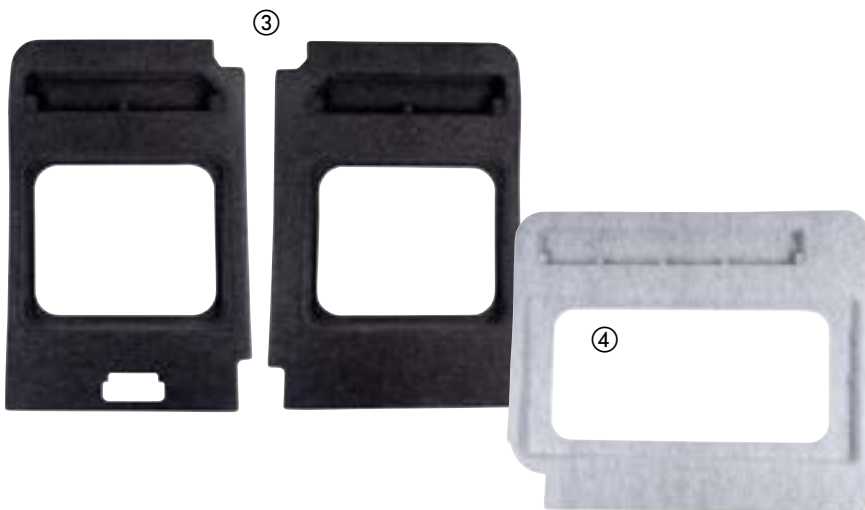
The wood-free alternative to previously used plywood panels in interior construction. Special polyester fibers form the base material and prevent rotting.

VFLEX is breathable and can absorb and release moisture. The material is very light and also absorbs sound.

Areas of application: e.g. wall cladding, ceiling cladding, lining of e.g. storage spaces, rear garages.

Dimensions: 2440 x 1300 x 2.7 mm, 950g/sqm

① Color gray	51044	49,90
② Color anthracite	51045	54,90



### Sliding & rear door panels suitable for Fiat Ducato Type 250 (from 2006 to present)

- Preformed polyester felt modules
- Requirements: medium roof height (LH2 ) and rear doors without standard windows (complete sheet metal doors)

#### Tailgate trim - 2-piece set

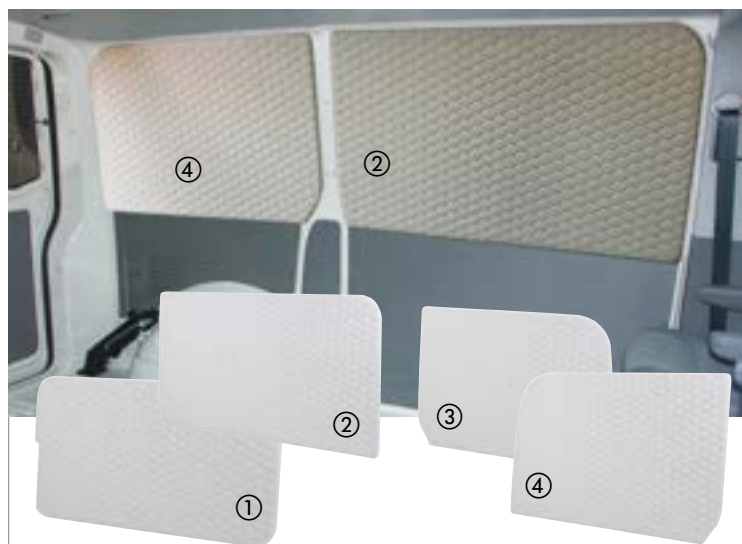
Dimensions: 1125 x 785 x 120 mm

③ Color anthracite	51046	225,-
Color gray	510460	225,-

#### Sliding door panel Ducato

Dimensions: 1260 x 1053 x 99.9 mm

Color anthracite	51047	177,-
④ Color gray	510470	177,-



### Quilted interior trim for VW T5/T6 buses without windows

- Homely ambience in VW T6 without windows
- Chic imitation leather look with quilting
- Mounting material included

Easy to attach with dowels in the existing holes in VW T5/T6 (without glazing) or with Velcro. Fixing material included in delivery. The material is color coordinated with the VW interior colors.

① 1x panels for sliding door	32000	159,-
② 1x panels for side opposite sliding door	32001	165,-
③ 1x panel for rear right side window	32002	165,-
④ 1x panels for rear left side window	32003	165,-



### Galoway leather grain 🚚

Plywood panel about 3 mm with noble decor, can be disposed of in an environmentally friendly way. Color: Warm beige,

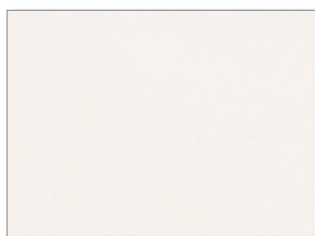
size 1.22 x 2.50 m **510071 74,95**  
GP\* 24,57 / 1 qm



### Flexaform Struktura 🚚

Dimensionally stable special fiberboard with matt gray surface, can be disposed of in an environmentally friendly manner. More suitable for vehicles than poplar plywood. Color: pearl gray,

size 1,22 x 2,44 m **51010 35,70**  
GP\* 11,99 / 1 qm



### Décor hybrid 🚚

Dimensionally stable special fiberboard with matt gray surface, can be disposed of in an environmentally friendly way. More suitable for vehicles than poplar plywood. Color: Eggshell

Size 1,22 x 2,44 m **51012 64,95**  
GP\* 20,14 / 1 qm

### Special panels 3 mm for interior lining

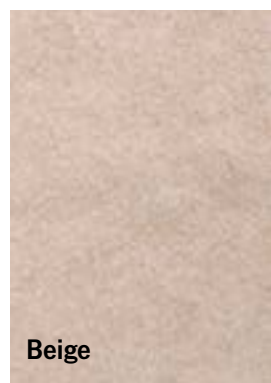
- Good looks
- Robust quality
- Easy care

The purpose of interior trim is to clad the interior of the fissured vehicle body in such a way that a homely atmosphere is created in the vehicle and, at the same time, the insulation material between the vehicle sheet metal and the interior trim is concealed. The cladding material must therefore be able to adapt well to the curvature of the body.

# X-Trem® Stretch Carpet Felt

## Easy-Trim, easy to install

- In England the most popular type for vehicle trim
- Simple processing, therefore perfect for do-it-yourselfers
- 4-way / super stretch (4-Way Superstretch)
- In 5 different colors
- Suitable for all surfaces (wood, plastic, metal and also on insulation)
- Insulate (acoustics) and beautify the vehicle interior
- Due to the special stretching ability, even curves such as wheel arches are no problem



Beige



Silver gray



Dark gray



Slate



Anthracite

### X-Trem® Stretch Carpet Felt

- Highly flexible needle felt velour
- Thickness ca. 4.6 mm,
- Weight ca. 390 gr/sqm.
- Material: 100% polyester

Color	Roll W 2 x L 2 m (4 m²)			Blank W 2 x L 5 m (10 m²)			Roll W 2 x L 30 m (60 m²)		
Beige	500891	79,-	GP* 19,75/qm	500890	145,-	GP* 14,50/qm	50089	579,-	GP* 9,65/qm
Silver gray	500831	75,60	GP* 18,90/qm	500830	139,-	GP* 13,90/qm	50083	612,-	GP* 10,20/qm
Dark gray	500841	75,60	GP* 18,90/qm	500840	139,-	GP* 13,90/qm	50084	612,-	GP* 10,20/qm
Slate	500851	79,-	GP* 19,75/qm	500850	145,-	GP* 14,50/qm	50085	579,-	GP* 9,65/qm
Anthracite	500881	75,60	GP* 18,90/qm	500880	139,-	GP* 13,90/qm	50088	612,-	GP* 10,20/qm

### Self Adhesive Super Stretch Carpet Felt

Thickness 3 mm, weight ca. 365 gr/sqm. 100% polypropylene

**Dark gray**, roll W 1.4 x L 60 m

50092 709,-

GP\* 8,44/ 1 qm

**Dark gray**, blank W 1.4 x L 5 m

500920 114,-

GP\* 11,40/ 1 qm

**Beige**, roll W 1.4 x L 60 m

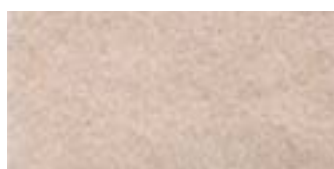
500922 659,-

GP\* 7,85/ 1 qm

**Beige**, blank W 1,4 x L 5 m

500923 95,90

GP\* 13,70/ 1 qm



GP\* = base price per specified unit

### Plastic wedge set, 5 pcs.

Ideal for loosening trim parts, trim strips, etc. without damaging the paint. Practical combination of different wedge and lever variants. Robust special plastic.

50093 35,10

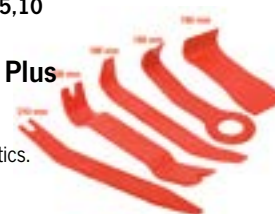
### Power Spray Adhesive Plus

For X-trem insulator & fabrics, heat resistant up to 110°C. Adheres to wood, metal and plastics.

400 ml 500130 16,95

GP\* 42,37/ 1 liter

Danger: H222, H229, H315, H336, H411



Danger



**NEW**  
2023



Note: For Ducato/Boxer/Jumper/Movano also available in white high gloss.

## Cover Plus ABS interior trim panels - the simple finishing alternative to wood or fabric

- The cladding panels that replicate the shape of the cargo hold walls
- Simple and fast assembly
- Panel thickness: 3-5 mm
- Ideally suited for the installation of wet cells
- Fastening by standard rivets, sealing by waterproof and food grade sealant
- No interference with the carrying parts of the vehicle.
- No TÜV acceptance necessary
- Maintenance of tail lights and other vehicle parts possible without restrictions
- Total payload and load volume remain the same
- Waterproof and disinfectant resistant
- Easy to clean
- Noble interior design due to gray textured surface

Design the interior trim of your vehicle easily and quickly with the ABS panels perfectly preformed for the interior of the vehicle. The registration certificate does not need to be updated. In case of accident, the plates can be replaced separately. Suitable for all campers and vans. Also suitable for transporting food for which no ATP certificate is required as well as plants, animals and dangerous goods.

Scope of delivery: ABS panels, rivets and assembly instructions.

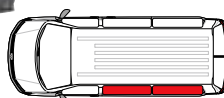
## COMPLIANT WITH THE FOLLOWING STANDARDS:

- HACCP, CE 852/2004 regulation, with reference to washable, sanitizable and food safe surface (TESTMOCA);
- ADR standard on the transport of dangerous goods (some classes);
- Compliant with European Directive 2013C 343/03 on good distribution practice for medicinal products for human use.
- Compliant with UNI ISO 3795:1992 standard



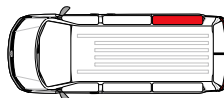
### ① Interior trim left, 2-piece

Vehicle type	Wheelbase/Length (mm)	Height (mm)	Color	Weight	Item no.	Price
Fiat Ducato, Peugeot Boxer, Citroën Jumper, Opel Movano as of 2006	L2	H2	white	15,0 kg	<b>400210</b>	<b>599,-</b>
	L2	H2	gray	18,7 kg	<b>400236</b>	<b>979,-</b>
	L3	H2	white	17,0 kg	<b>400215</b>	<b>625,-</b>
	L3	H2	gray	21,2 kg	<b>400242</b>	<b>1039,-</b>
	L3	H3	white	24,3 kg	<b>400220</b>	<b>694,-</b>
Ford Custom from 2013	2555	1408	gray	10,5 kg	<b>400277</b>	<b>699,-</b>
	2922	1405	gray	16,0 kg	<b>400282</b>	<b>739,-</b>



### ② Interior trim right side, 1-piece

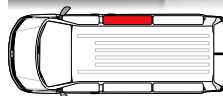
Vehicle type	Wheelbase/Length (mm)	Height (mm)	Color	Weight	Item no.	Price
Fiat Ducato, Peugeot Boxer, Citroën Jumper, Opel Movano as of 2006	L2	H2	white	7,5 kg	<b>400211</b>	<b>329,-</b>
	L2	H2	gray	9,4 kg	<b>400237</b>	<b>550,-</b>
	L3	H2	white	9,7 kg	<b>400216</b>	<b>354,-</b>
	L3	H2	gray	12,0 kg	<b>400243</b>	<b>610,-</b>
	L3	H3	white	12,4 kg	<b>400221</b>	<b>410,-</b>
Ford Custom from 2013	2555	1408	gray	5,7 kg	<b>400278</b>	<b>390,-</b>
	2922	1405	gray	7,0 kg	<b>400283</b>	<b>430,-</b>



Vehicle type	Wheelbase/Length (mm)	Height (mm)	Color	Weight	Item no.	Price
MB Sprinter from 2018	FWD 3924	H2	gray	21,2 kg	<b>400256</b>	<b>939,-</b>
	RWD 3665	H2	gray	20,6 kg	<b>400261</b>	<b>939,-</b>
Peugeot Expert/Citroën Jumpy, from 2016	2512	1390	gray	9,6 kg	<b>400247</b>	<b>789,-</b>
	2862	1390	gray	11,0 kg	<b>400252</b>	<b>829,-</b>
VW Crafter from 2017	3450	1961	gray	20,0 kg	<b>400284</b>	<b>899,-</b>
VW T6.1* from 2018	2543	1410	gray	9,8 kg	<b>400266</b>	<b>699,-</b>
	2943	1410	gray	11,3 kg	<b>400272</b>	<b>699,-</b>

Vehicle type	Wheelbase/Length (mm)	Height (mm)	Color	Weight	Item no.	Price
MB Sprinter from 2018	FWD 3924	H2	gray	10,7 kg	<b>400257</b>	<b>540,-</b>
	RWD 3665	H2	gray	10,4 kg	<b>400262</b>	<b>540,-</b>
Peugeot Expert/Citroën Jumpy, from 2016	2512	1390	gray	5,6 kg	<b>400248</b>	<b>480,-</b>
	2862	1390	gray	6,3 kg	<b>400253</b>	<b>520,-</b>
VW Crafter from 2017	3450	1961	gray	10,5 kg	<b>400285</b>	<b>470,-</b>
VW T6.1* from 2018	2543	1410	gray	5,8 kg	<b>400267</b>	<b>390,-</b>
	2943	1410	gray	6,5 kg	<b>400273</b>	<b>429,-</b>

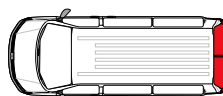
\*Available for VW T6 from Q2/2023



## ③ Interior trim right sliding door, 1-piece

Vehicle type	Wheelbase/ Length (mm)	Height (mm)	Color	Weight	Item no.	Price
Fiat Ducato, Peugeot Boxer, CitroënJumper, Opel Movano as of 2006	L2	H2	white	6,3 kg	400212	305,-
	L2	H2	gray	8,0 kg	400238	477,-
	L3	H2	white	6,3 kg	400217	272,-
	L3	H2	gray	8,0 kg	400238	477,-
	L3	H3	white	6,3 kg	400222	304,-
Ford Custom from 2013	2555	1408	gray	4,7 kg	400279	377,-
	2922	1405	gray	4,7 kg	400279	377,-

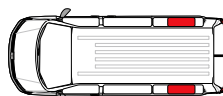
Vehicle type	Wheelbase/ Length (mm)	Height (mm)	Color	Weight	Item no.	Price
MB Sprinter from 2018	FWD 3924	H2	gray	7,7 kg	400258	477,-
	RWD 3665	H2	gray	7,7 kg	400258	477,-
Peugeot Expert/ CitroënJumpy, from 2016	2512	1390	gray	4,0 kg	400249	377,-
	2862	1390	gray	4,0 kg	400249	377,-
VW Crafter from 2017	3450	1961	gray	9,4 kg	400286	477,-
VW T6.1* from 2018	2543	1410	gray	4,1 kg	400268	477,-
	2943	1410	gray	4,1 kg	400274	477,-



## ④ Interior trim right + left rear door, 2-piece

Vehicle type	Wheelbase/ Length (mm)	Height (mm)	Color	Weight	Item no.	Price
Fiat Ducato, Peugeot Boxer, CitroënJumper, Opel Movano as of 2006	L2	H2	white	7,0 kg	400213	379,-
	L2	H2	gray	8,7 kg	400239	805,-
	L3	H2	white	7,0 kg	400218	379,-
	L3	H2	gray	8,7 kg	400239	805,-
	L3	H3	white	8,5 kg	400223	482,-
Ford Custom from 2013	2555	1408	gray	6,3 kg	400280	591,-
	2922	1405	gray	6,3 kg	400280	591,-

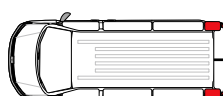
Vehicle type	Wheelbase/ Length (mm)	Height (mm)	Color	Weight	Item no.	Price
MB Sprinter from 2018	FWD 3924	H2	gray	9,7 kg	400259	805,-
	RWD 3665	H2	gray	9,6 kg	400264	805,-
Peugeot Expert/ CitroënJumpy, from 2016	2512	1390	gray	5,2 kg	400250	562,-
	2862	1390	gray	5,2 kg	400250	562,-
VW Crafter from 2017	3450	1961	gray	8,5 kg	400287	805,-
VW T6.1* from 2018	2543	1410	gray	5,3 kg	400269	805,-
	2943	1410	gray	5,3 kg	400275	805,-



## ⑤ Interior trim right + left wheel arch, 2-piece

Vehicle type	Wheelbase/ Length (mm)	Height (mm)	Color	Weight	Item no.	Price
Fiat Ducato, Peugeot Boxer, CitroënJumper, Opel Movano as of 2006	L2	H2	white	3,5 kg	400204	147,90
	L2	H2	gray	3,5 kg	400240	177,-
	L3	H2	white	3,5 kg	400204	147,90
	L3	H2	gray	3,5 kg	400240	177,-
	L3	H3	white	3,5 kg	400204	147,90
Ford Custom from 2013	2555	1408	gray	2,7 kg	400281	177,-
	2922	1405	gray	2,7 kg	400281	177,-

Vehicle type	Wheelbase/ Length (mm)	Height (mm)	Color	Weight	Item no.	Price
MB Sprinter from 2018	FWD 3924	H2	gray	3,5 kg	400260	177,-
	RWD 3665	H2	gray	3,5 kg	400265	177,-
Peugeot Expert/ CitroënJumpy, from 2016	2512	1390	gray	3,5 kg	400254	179,-
	2862	1390	gray	3,5 kg	400255	179,-
VW Crafter from 2017	3450	1961	gray	3,5 kg	400288	177,-
VW T6.1* from 2018	2543	1410	gray	3,5 kg	400270	177,-
	2943	1410	gray	3,5 kg	400276	177,-



## ⑥ Interior trim right + left rear pillar, 2-piece

Vehicle type	Wheelbase/ Length (mm)	Height (mm)	Color	Weight	Item no.	Price
Fiat Ducato, Peugeot Boxer, CitroënJumper, Opel Movano as of 2006	L2	H2	gray	1,0 kg	400241	274,-
	L3	H2	gray	1,0 kg	400241	274,-

Vehicle type	Wheelbase/ Length (mm)	Height (mm)	Color	Weight	Item no.	Price
Peugeot Expert/ CitroënJumpy, from 2016	2512	1390	gray	1,0 kg	400251	164,-
	2862	1390	gray	1,0 kg	400251	164,-
VW T6.1* from 2018	2543	1410	gray	1,0 kg	400271	163,-
	2943	1410	gray	1,0 kg	400271	163,-

\*Available for VW T6 from Q2/2023

🚚 Shipping is done by freight forwarder, ask your dealer for freight costs



## Poplar plywood with laminated surface or HPL laminated surface

- Extremely light - ca. 7.2 kg/m
- Very stable with 0.6 mm coating
- Pressure and scratch resistant
- Easy care surface, long durability
- Plate thickness ca. 15 mm
- Plate size ca. 122 x 244 cm /ca. 2,98 m<sup>2</sup>
- Strong special coating in HPL quality
- Particularly high quality surface finish

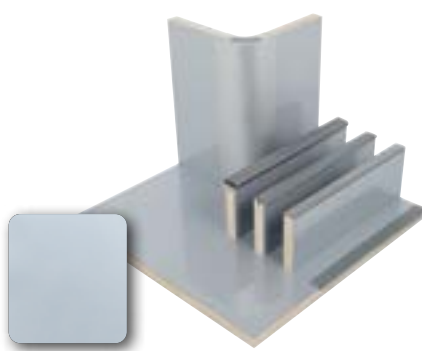
Also available as  
1/4 plate



### "High gloss white" HPL laminate

Weight whole plate: ca. 25 kg  
Whole plate (122 x 244 cm) **52025 249,-**  
GP 83,64/1 qm  
1/4 plate (60 x 120 cm) **520260 63,95**  
GP 84,50/1 qm

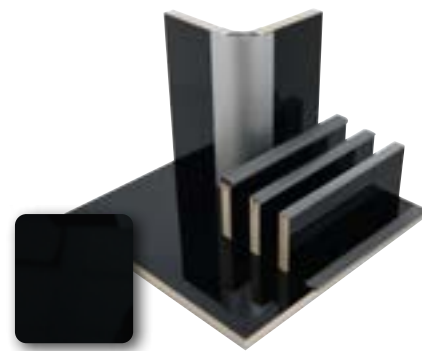
**Corner connection profile 90°** as a connection to the wooden panel. Both sides open.  
Aluminum, length 220 cm **522141 68,90**  
GP 26,59/1 m



### "High gloss silver" HPL laminate

Weight whole plate: ca. 25 kg  
Whole plate (122 x 244 cm) **520252 299,-**  
GP 100,44/1 qm  
1/4 plate (60 x 120 cm) **520261 78,95**  
GP 93,89/1 qm

**Corner connection profile 90°** as a connection to the wooden panel. Both sides open.  
Aluminum, length 220 cm **522141 68,90**  
GP 31,32/1 m



### "High gloss black" HPL laminate

Weight whole plate: ca. 24.5 kg  
Whole plate (122 x 244 cm) **520251 279,-**  
GP 93,72/1 qm  
1/4 plate (60 x 120 cm) **520262 71,95**  
GP 95,23/1 qm

**Corner connection profile 90°** as a connection to the wooden panel. Both sides open.  
Aluminum, length 220 cm **522141 68,90**  
GP 31,32/1 m



### "High gloss olive" HPL laminate

Weight whole plate: ca. 24.0 kg  
Whole plate (122 x 244 cm) **52019 284,-**  
GP 95,40/1 qm  
1/4 plate (60 x 120 cm) **520191 74,95**  
GP 83,15/1 qm

**Corner connection profile 90°** as a connection to the wooden panel. Both sides open.  
Aluminum, length 220 cm **522141 68,90**  
GP 31,32/1 m



### "Cherry" HPL laminate

Weight whole plate: ca. 23.5 kg  
Whole plate (122 x 244 cm) **52016 259,-**  
GP 87,00/1 qm  
1/4 plate (60 x 120 cm) **520161 65,95**  
GP 81,21/1 qm

**Corner connection profile 90°** as a connection to the wooden panel. Both sides open.  
Aluminum, length 220 cm **522141 68,90**  
GP 31,32/1 m



### "Apple" HPL laminate

Weight per plate: ca. 23.0 kg  
Whole plate (122 x 244 cm) **52012 262,-**  
GP 88,01/1 qm  
1/4 plate (60 x 120 cm) **520121 69,95**  
GP 81,21/1 qm

**Corner connection profile 90°** as a connection to the wooden panel. Both sides open.  
Aluminum, length 220 cm **522141 68,90**  
GP 31,32/1 m



### "Walnut" HPL laminate

Weight per plate: ca. 21.5 kg  
Whole plate (122 x 244 cm) **52023 246,-**  
GP 94,05/1 m  
1/4 plate (61.1 x 122 cm) **520231 72,95**  
GP 85,50/1 qm

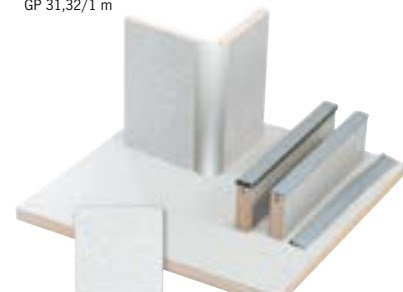
**Corner connection profile 90°** as a connection to the wooden panel. Both sides open.  
Aluminum, length 220 cm **522141 68,90**  
GP 31,32/1 m



### "Anthracite Metallic" laminate

Weight per panel: ca. 24.0 kg  
Whole plate (122 x 244 cm) **520151 246,-**  
GP 82,63/1 qm  
1/4 plate (61.1 x 122 cm) **520152 64,95**  
GP 87,18/1 qm

**Corner connection profile 90°** as a connection to the wooden panel. Both sides open.  
Aluminum, length 220 cm **522141 68,90**  
GP 31,32/1 m

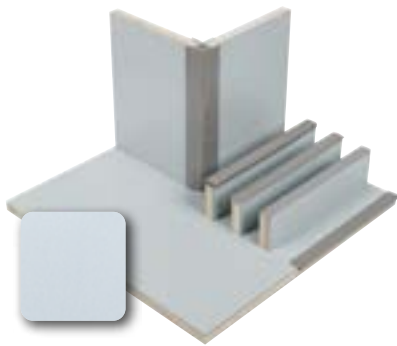


### "Granitto" HPL laminate

Weight per plate: ca. 23.5 kg  
Whole plate (122 x 244 cm) **52007 234,-**  
GP 78,60/1 qm  
1/4 plate (60 x 120 cm) **520071 62,95**  
GP 80,47/1 qm

**Corner connection profile 90°** as a connection to the wooden panel. Both sides open. Aluminum, length 220 cm **522141 68,90**  
GP 31,32/1 m

## Poplar plywood with HPL laminate surface - Reimo Eco Series



**"Pure Graffiti" matt HPL laminate**

Weight whole plate: ca. 26.5 kg  
Whole plate (122 x 244 cm) **52091 119,-**  
GP 39,97/1 qm

**Corner connection profile 90°** as a connection to the wooden panel. PVC, length 220 cm  
**522004 27,95**  
GP 12,70/1 m



**"Mother of pearl" glossy HPL laminate**

Weight per plate: ca. 26 kg  
Whole plate (122 x 244 cm) **52090 139,-**  
GP 46,69/1 qm

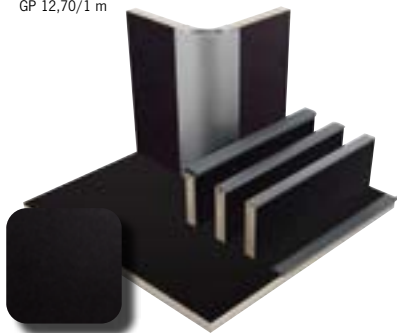
**Corner connection profile 90°** as a connection to the wooden panel. Both sides open. Aluminum, length 220 cm  
**522141 68,90**  
GP 31,32/1 m



**"Maple" matt HPL laminate**

Weight per plate: ca. 26 kg  
Whole plate (122 x 244 cm) **52092 124,-**  
GP 41,65/1 qm

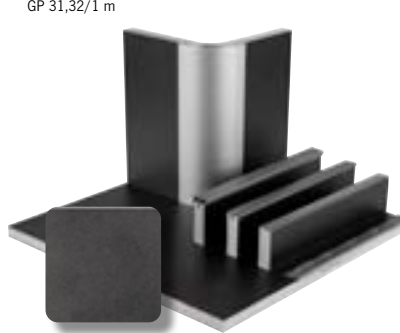
**1/4 plate (61.1 x 122 cm) 520921 35,95**  
GP 48,26/1 qm  
**Corner connection profile 90°** as a connection to the wooden panel. Both sides open. Aluminum, length 220 cm  
**522141 68,90**  
GP 31,32/1 m



**"Matt Black" HPL laminate**

Whole plate (122 x 244 cm) **52096 302,-**  
GP 101,44/1 qm

**Corner connection profile 90°** as a connection to the wooden panel. PVC, length 220 cm  
**522004 27,95**  
GP 12,70/1 m



**"Pearl" Metallic Poplar Plywood**

Coated on both sides. Weight per board: ca. 25kg  
Plate thickness ca. 15 mm  
Whole plate (122 x 244 cm) **52073 363,-**  
GP 121,93/1 qm

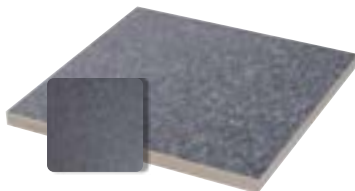
**Corner connection profile 90°.** Both sides open. Aluminum, length 220 cm  
**522141 68,90**  
GP 31,32/1 m



**"Olmo" HPL laminate**

Weight per plate: ca. 23.0 kg Plate thickness ca. 15 mm  
Whole plate (122 x 244 cm) **52048 260,-**  
GP 87,34/1 qm

**Corner connection profile 90°.** Both sides open. Aluminum, length 220 cm  
**522141 68,90**  
GP 31,32/1 m



**"Basalt" poplar laminate**

Plate thickness: ca. 15 mm  
Whole plate (122 x 244 cm) **520257 266,-**  
GP 89,35/1 qm

### E05 standard

Our furniture panels meet the stricter limits for formaldehyde emissions from wood-based materials in Germany.



**Plywood natural**

Untreated, environmentally friendly in production and disposal, breathable, easy to work with.  
Weight per board: ca. 30 kg  
Plate thickness: ca. 18 mm  
Whole plate (122 x 244 cm) **52030 144,-**  
GP 48,37/1 qm



**Poplar laminate light gray**

Weight per plate: ca. 23.5 kg  
Plate thickness: ca. 15 mm  
Whole plate (122 x 244 cm) **52010 211,-**  
GP 70,88/1 qm



**Poplar plywood light gray**

Weight per panel: ca. 19.5 kg, panel thickness: ca. 15 mm  
Whole plate (137 x 200 cm) **52001 369,-**  
GP 134,671 qm



**Poplar plywood natural**

Weight per plate: ca. 17.0 kg  
Panel thickness: ca. 14/15 mm  
Whole plate (122 x 244 cm) **52000 92,95**  
GP 31,22/1 qm

**ATTENTION! Deviating plate size**

**Shipping wooden panels:** 1/4 boards (60x120 cm) can be shipped without bulky surcharges. The shipping costs remain favorable. Whole boards (122x244 cm) will be shipped by forwarding agency from a minimum order quantity of 2 pieces (also mixed). In this case, increased shipping costs are incurred. It is easier and cheaper to pick up whole slabs at the dealer.



## EDGE BANDING, PROFILES, HINGES

- The proven furniture system for the self-builder
- With rounded, padded edges
- Protects the wood edge, high stability
- Material: PVC
- Is hammered into the milled groove

### Edge banding padded 15 mm

Air-cushioned edge protection profile with one-sided nose.

#### Silver

5 m	GP 5,50/1 m	<b>5210779</b>	<b>27,50</b>
25 m	GP 5,08/1 m	<b>5210778</b>	<b>127,-</b>

#### Dark gray

5 m	GP 5,59/1 m	<b>5210719</b>	<b>27,95</b>
25 m	GP 4,96/1 m	<b>5210718</b>	<b>124,-</b>

#### Medium gray

5 m	GP 5,79/1 m	<b>5210749</b>	<b>28,95</b>
25 m	GP 5,16/1 m	<b>5210748</b>	<b>129,-</b>

### Upholstered door edge 15 mm

for semi-set-up doors such as the Classic furniture system. This eliminates wood waste during door and flap construction.

#### Dark gray

5 m	GP 8,70/1 m	<b>5210519</b>	<b>43,50</b>
25 m	GP 7,92/1 m	<b>5210518</b>	<b>198,-</b>

#### Medium gray

5 m	GP 8,24/1 m	<b>5210549</b>	<b>41,20</b>
25 m	GP 7,72/1 m	<b>5210548</b>	<b>193,-</b>

### Door inner liner with sealing lip

for the door cutout

#### Medium gray

5 m	GP 3,79/1 m	<b>5210349</b>	<b>18,95</b>
40 m	GP 4,17/1 m	<b>5210348</b>	<b>167,-</b>

### T-border with nose 15 mm with one-sided nose to cover the cut edges.

#### Light gray

5 m	GP 3,73/1 m	<b>521019</b>	<b>18,65</b>
40 m	GP 4,75/1 m	<b>521018</b>	<b>190,-</b>

#### Dark gray

5 m	GP 5,64/1 m	<b>5210119</b>	<b>28,20</b>
40 m	GP 5,18/1 m	<b>5210118</b>	<b>207,25</b>

#### Medium gray

5 m	GP 4,22/1 m	<b>5210149</b>	<b>21,10</b>
40 m	GP 4,97/1 m	<b>5210148</b>	<b>199,-</b>

#### Silver

5 m	GP 4,05/1 m	<b>5210179</b>	<b>20,25</b>
40 m	GP 4,80/1 m	<b>5210178</b>	<b>192,-</b>

#### Décor apple

5 m	GP 4,96/1 m	<b>5210129</b>	<b>24,80</b>
40 m	GP 2,92/1 m	<b>5210128</b>	<b>146,-</b>

### T-border standard 15 mm

#### Dark gray

5 m	GP 5,101 m	<b>5210019</b>	<b>24,50</b>
40 m	GP 5,10/1 m	<b>520018</b>	<b>204,-</b>

#### Medium gray

5 m	GP 6,65/1 m	<b>5210049</b>	<b>33,25</b>
40 m	GP 5,051 m	<b>5210048</b>	<b>202,-</b>

### T-border semicircular 15 mm

to cover the cut edges

#### Décor cherry

5 m	GP 6,06/1 m	<b>527072</b>	<b>30,30</b>
50 m	GP 6,08/1 m	<b>527071</b>	<b>304,-</b>

### Rocker bar

Stop edge for shelves or cabinets. For 15 mm board thickness.

#### Medium gray, 220 cm rod

<b>521104</b>	<b>18,95</b>
GP 8,61/1 m	

Order matching hinges at the same time

### Special hinge for door liner padded

Sturdy, powder-coated, upholstered to match the color of the door liner. Can be used on the right or left by repositioning.

#### Special hinge left, 2 pieces

Light gray	<b>523012</b>	<b>6,10</b>
	<b>52301</b>	
Brown	<b>5230102</b>	<b>6,10</b>
	<b>523010</b>	
Dark gray	<b>5230112</b>	<b>6,10</b>
	<b>523011</b>	
Mid gray	<b>5230142</b>	<b>6,10</b>
	<b>523014</b>	

#### Special hinge right, 2 pieces

Light gray	<b>523002</b>	<b>6,10</b>
	<b>52300</b>	
Brown	<b>5230002</b>	<b>6,10</b>
	<b>523000</b>	
Dark gray	<b>5230012</b>	<b>6,10</b>
	<b>523001</b>	
Mid gray	<b>5230042</b>	<b>6,10</b>
	<b>523004</b>	

**2**  
PIECE

### Mounting accessories



#### Universal slitting cutter

30 x 1,5 mm **52701** **6,30**

### Special adhesive

For gluing glue-arounds into the wood groove. Content 85 g

<b>52713</b>	<b>9,80</b>
GP* 11,53/ 100 g	

### White glue tube Bindau-RS


20 g <b>52714</b>	<b>3,20</b>
GP* 16,00/ 100 g	

### Dübelfix

Marking aid for easy installation of wooden dowels.

Ø 6 mm, 4 pcs. **53245** **3,30**





**Corner profile padded**  
Padded special profile for 90° connection of 15 mm furniture boards. Color-matched to the edgings and furniture handles. Length 220 cm


Dark gray	<b>522001</b>	<b>27,95</b>
	GP 12,70/1 m	
Medium gray	<b>522004</b>	<b>27,95</b>
	GP 12,70/1 m	

**Corner profile alu**  
90° profile as a connection for 15mm. Wooden panels. Length 220cm. Alu

2 sides open	<b>522141</b>	<b>68,90</b>
	GP 31,32/1 m	
1-sided open	<b>52216</b>	<b>61,50</b>
	GP 27,95/1 m	

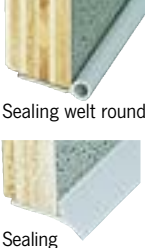
**End cap for corner profile alu**  
Medium gray, price per piece

left	<b>522234</b>	<b>4,45</b>
right	<b>522224</b>	<b>4,45</b>



**Edge banding for Edge banding machines**  
Without hot melt adhesive.

Apple	19 x 2 mm	10 m	GP 1,65/1 m	<b>521680</b>	<b>16,50</b>
	19 x 2 mm	50 m	GP 1,67/1 m	<b>521681</b>	<b>83,50</b>
Silver	20 x 2 mm	10 m	GP 2,59/1 m	<b>521640</b>	<b>25,95</b>
	20 x 2 mm	50 m	GP 2,58/1 m	<b>521641</b>	<b>129,-</b>
Walnut	20 x 2 mm	10 m	GP 1,65/1 m	<b>521571</b>	<b>16,50</b>
	20 x 2 mm	50 m	GP 1,65/1 m	<b>521572</b>	<b>82,50</b>
Walnut	23 x 2 mm	10 m	GP 2,25/1 m	<b>521573</b>	<b>22,50</b>
	23 x 2 mm	50 m	GP 11,30/1 m	<b>521574</b>	<b>113,-</b>
Black	19 x 2 mm	10 m	GP 1,65/1 m	<b>521280</b>	<b>16,50</b>
	19 x 2 mm	50 m	GP 1,64/1 m	<b>521281</b>	<b>81,95</b>
Dark gray	20 x 2 mm	10 m	GP 3,80/1 m	<b>521560</b>	<b>37,95</b>
	20 x 2 mm	50 m	GP 3,80/1 m	<b>521561</b>	<b>190,-</b>



**Sealing keder round / Y-profile**  
Easy adaptation of wooden parts to floor, Side and roof trim.

Medium gray	Ø 5 mm	5 m	GP 3,12/1 m	<b>5250049</b>	<b>15,60</b>
Medium gray	Ø 5 mm	50 m	GP 3,84/1 m	<b>5250048</b>	<b>192,-</b>
Silver	Ø 5 mm	5 m	GP 3,19/1 m	<b>5250079</b>	<b>15,95</b>
Silver	Ø 5 mm	50 m	GP 3,12/1 m	<b>5250078</b>	<b>156,-</b>
Medium gray	Y profile	5 m	GP 5,58/1 m	<b>5250849</b>	<b>27,90</b>
Medium gray	Y profile	100 m	GP 5,44/1 m	<b>5250848</b>	<b>544,-</b>

## Cladding with imitation leather

### Imitation leather light gray, grained

Soft imitation leather for sticking or covering vehicle parts. Material: 53 % polyurethane, 32 % polyester, 15 % cotton. Unlaminated, width ca. 140 cm.

5 m	GP* 29,40/1 qm	<b>5102110</b>	<b>147,-</b>
20 m	GP* 27,85/1 qm	<b>5102111</b>	<b>557,-</b>

### Back side laminated with 3 mm foam (Chameuse)

Width ca 140 cm.


5 m	GP* 49,80/1 qm	<b>5102112</b>	<b>249,-</b>
20 m	GP* 48,90/1 qm	<b>5102113</b>	<b>978,-</b>

The purpose of the interior trim is to clad the interior of the ragged vehicle body in such a way that a homely atmosphere is created in the vehicle and, at the same time, the insulation material between the vehicle sheet metal and the interior trim is concealed. The cladding material must therefore be able to adapt well to the curvature of the body.




**Cable tie**  
For quick fastening of hoses or cables. Plastic, assorted colors.

<b>200 x 3.5 mm</b>	100 piece	<b>810780</b>	<b>3,90</b>
<b>295 x 3.6 mm</b>	100 piece	<b>81079</b>	<b>6,70</b>



**Rivets / dowels / drive-in nut**

① Expanding rivets (not shown), 3.2 x 13 mm, 10 pcs.	<b>29426</b>	<b>4,80</b>
② Exp. anchor incl. M4 screws For fixing furniture to the body.	4 piece	<b>53241L</b> 53241 4,05
③ Drive-in nuts M6 thread. For connecting furniture parts.	20 piece	<b>53240L</b> 53240 6,90
④ Sleeve nut M6	4 pieces	<b>29357L</b> 29357 4,60



**Alu U-profile**  
for protection of 15 mm wooden edges. Length 2 m, 20 x 20 x 2 mm, Silver anodized

<b>58820</b>	<b>21,95</b>
--------------	--------------



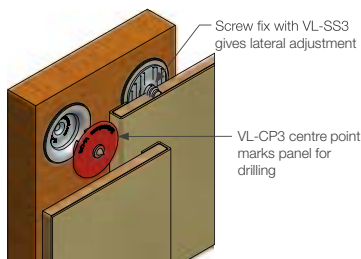


# FURNITURE MAKING ACCESSORIES, PROFILES, FLOOR PANELS

## Very Low Profile Clip Set –Panel Fixation

Perfect for mounting removable thin-walled panels/cladding with shallow depth. No special mounting tools are required. The sets can be glued and/or screwed.

- ① **Very Low Sockets**  
100 pcs. **532011** 155,-
- ② **Profiles Stainless Steel Screw**  
10 pcs. **532018** 3,20



## Aluminum floor trim

Beveled on the flooring side for easier sweeping of your mobile. Tread area grooved for high slip resistance. Corner rounded. 3 m bar, 25 x 14 x 1.5 mm, Black anodized  
**51220** **26,95**  
GP\* 8,98 /1 m

## Connecting profiles for 3 mm thick cladding panels



### ① Joint connection profile

For connecting the cladding panels. 220 cm long.  
Light gray **51101** **6,90**  
Dark gray **511011** **7,30**

### ② End profile aluminum

Lateral termination of roof cladding, facilitates installation equally stable termination profile for cladding panels. Suitable for panel thicknesses of 3 - 4 mm. Anodized aluminum  
Length: 2.54 m **51210** **17,95**

### ③ End profile

Edge protection and facing for the outer sides of the cladding panels. Facilitates assembly. 220 cm long.  
Light gray **51100** **5,95**

### ④ Connecting profile outside, 90

For the corner connection of the cladding panels. 220 cm long.  
Dark gray **511021** **6,75**

### ⑤ Connecting profile inside, 90

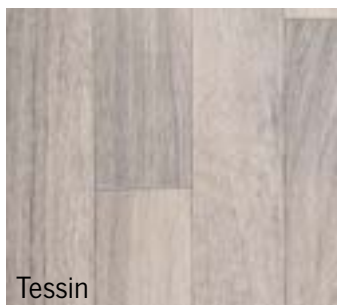
For 90° corner joints of cladding panels, especially necessary for interior cladding of high roofs. 220 cm long.  
Light gray **51103** **9,40**

### Cap screws for fastening the cladding panels

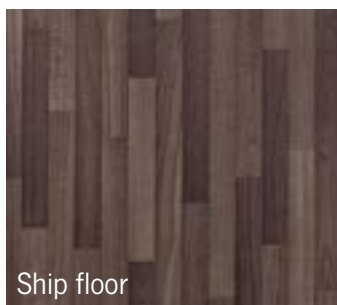
3.9 x 22 mm, medium gray. 20 pcs. **513004** **3,50**  
3.9 x 22 mm, Brown. 20 pcs. **513000** **3,50**



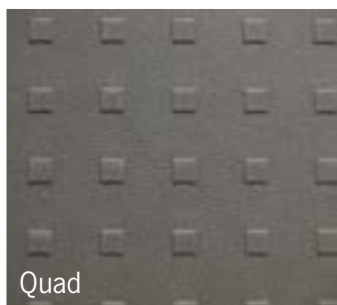
The interior trim profiles fit our side trim panels, mounting thickness 3-4 mm.



Tessin



Ship floor



Quad



## Floor panels

- Modern designs
- Haptically pleasant, textured top layer
- Anti-slip
- Easy to clean
- Water resistant OSB core board
- Easy to work with wood tools

Ca. 10 mm thick, made of waterproof glued chipboard coated with plastic flooring.

### Tessin:

**Vinyl, robust wear layer, insensitive to minor damage**

340 x 180 x 0,95 cm	<b>10539</b>	<b>499,-</b>
300 x 170 x 0,95 cm	<b>10538</b>	<b>379,-</b>
250 x 170 x 0,95 cm	<b>10537</b>	<b>359,-</b>

### Ship bottom:

**Vinyl, robust wear layer, insensitive to minor damage**

340 x 180 x 0,90 cm	<b>105393</b>	<b>499,-</b>
300 x 170 x 0,80 cm	<b>105383</b>	<b>379,-</b>
250 x 170 x 0,95 cm	<b>105373</b>	<b>359,-</b>

### Quad:

**TPO, Hard and sensitive surface.**

290 x 163 x 1,00 cm	<b>10519</b>	<b>485,-</b>
250 x 163 x 1,00 cm	<b>10524</b>	<b>435,-</b>

Unfortunately, shipping of floor plates is not possible. Collection only from the dealer.

### TIP:

For insulation under the base plate we recommend X-trem insulation. Our aluminum sill profiles are suitable for finishing off the sill edges.



## REIMO furniture handle 2000

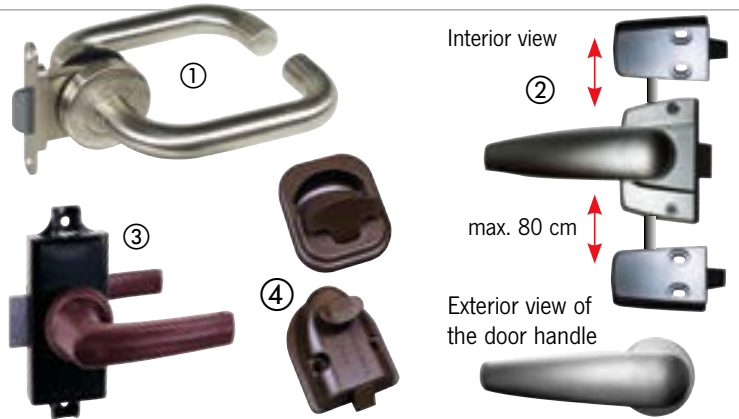
- For wood panels from 15-18 mm
- 10.000 closures tested, audited by TÜV Mannheim

① Hellgray	52415	7,61
② Medium gray	524154	7,60
③ Dark gray	524151	7,60
④ Brown	524150	7,60
⑤ Reimo handle 2000, round, yellow	524009	2,95
Furniture handle for wooden boards from 15-18 mm, angular shape, 5 x 5 cm		
• Flat fitting, ergonomically styled		
• Robust sliders with good grip		
⑥ Dark gray	524101	7,30
⑦ Brown	524100	7,30
Furniture lock for 15 mm wood panel thickness		
⑧ Brown	524200	6,40



## Toilet room locks

- ① **Door handle set**  
Mortise latch lock with square follower Complete with door handle and Fixing rosettes lock case made of zinc die-casting nickel-plated.  
Wall thickness up to 40 mm 53265 70,90
- ② **Toilet room lock with three-point locking system**  
2 rotating bars a 80 cm, can be shortened  
Silver matte 52473 48,70  
Chrome glossy 524731 55,90
- ③ **Toilet room lock, 3-piece with rosettes and door handle**  
Brown 52472 14,50
- ④ **Toilet room lock**  
oval shape, recessed design with inner opening  
Brown 524250 10,50



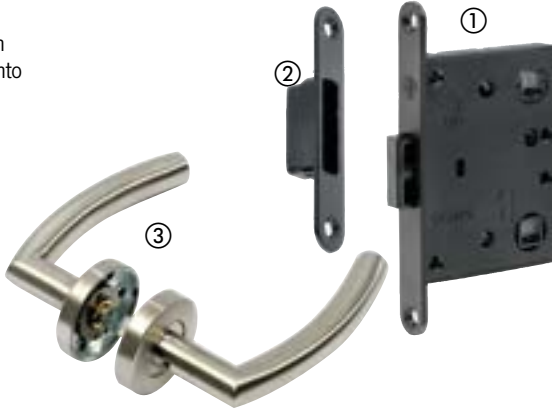
## Mortise latch lock Magnet-Lock

Mortise lock for room doors with magnetic locking. When the door is closed, the lock latch is magnetically pulled into the counter plate. Can be used on the left and right.

- ① **Mortise lock**  
Installation size: 80.5 x 59 mm, thickness 12mm 532511 14,50
- ② **Counter plate** for 532511 532512 7,90

### Door handle sets for mortise latch lock

- ③ **Sickle shape**  
Metal finish chrome matt 53251 22,20



### Door / flap handle

- Elegant bow handle made of zamak with chrome finish. Width 180 mm
- ① Outside handle 534091 16,25
- ② Castle 53418 1,20

## Cabinet handles with push button lock

- ① **Pushbutton centered, chrome gloss** Hole spacing: 128 mm, height: 18 mm Installation set with clamping unit 53109 19,60
- ② **Pushbutton centered, silver matt** Hole spacing: 128 mm, height: 18 mm Installation set with clamping unit 53110 18,95
- ③ **Push button centered, material ABS**, hole spacing: 224 mm, height: 28.3 mm, incl. lock 53432 23,70
- ④ **Pushbutton center, chrome gloss** Hole spacing: 160 mm, width: 195 mm, height: 30 mm 52426 18,40



## Metal handles

- ⑤ **Cabinet handle** 210 x 25 mm, hole spacing: 158 mm, snapper for this: 534131 53413 10,80

## Handles plastic

- ⑥ **Furniture handle incl. snapper** 185 x 15 mm, hole spacing 160 mm 53367 10,50

**Handle "Combi Line** Elegant furniture handle with push-button mechanism (one-hand operation)

- ⑦ **Silver/Black.** 52454 6,70



## PUSH LOCKS AND TUMBLERS

from **8,10**



Drilling Ø rosette: 26 mm. Incl. strike plate.

### Push Lock Complete lock sets

- One-hand operation for cabinet doors and drawers
- Small, round, no protruding parts
- For 15 mm panel thickness
- When the button is pressed, it jumps forward and serves as a handle

Gray	50 pc.	532701	259,-	1 pc.	53270	8,10
① Brown	50 St.	5327001	255,-	1 pc.	532700	8,10
② Nickel matt	50 pc.	5327051	345,-	1 pc.	532705	10,80
③ Chrome matt	50 pc.	532690	382,-	1 pc.	53269	11,30

### Push Lock locks double sided operation complete sets



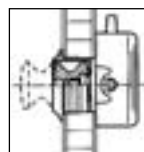
- For wet cell doors
- Operation from inside and outside

	50 piece	1 piece	
Gray	532711	415,-	53271 11,30
Brown	532712	410,-	532710 11,30
Gold	532731		53273 13,50
Silver matte	532716	494,-	532715 14,70

#### Espagnolette set for Push Lock locks

(Not Push Lock Mini & Push Snap Mini)

Brown	532750	9,70
White	532753	8,70

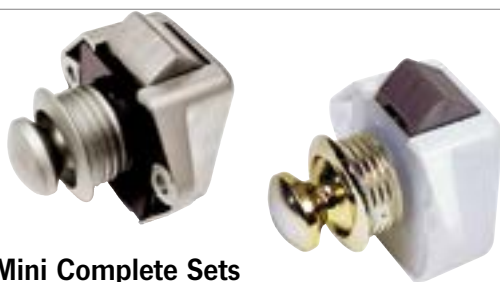


### Push Lock Mini Complete Sets

For small flaps and drawers

Drilling Ø rosette: 19 mm. Incl. strike plate.

	50 piece	1 piece	
Silver matte	532741	375,-	53274 10,40
White	5327431	209,-	532743 6,50



### Push Snap Mini Complete Sets

With permanent snap lock

Like Push Lock mini, but keeps closed even without button pressed. Drilling Ø rosette: 19 mm. No strike plate required.

	50 piece	1 piece	
Silver matte	5327611	380,-	532765 10,90
Gold	5327661	355,-	532766 10,90



### Rotary bolt metal (sash lock)

Fuse for large flaps. Zinc die-cast chrome plated.

Overlap 3 mm. Base plate: H 5 mm

53253	12,60
53253L	

Overlap 6 mm. Base plate: H 8 mm

53291	13,50
-------	-------



### Plastic twist lock

Prescriber. Fuse for large flaps.

Plastic, 3.5 mm base plate.

Brown	53254	5,20
	53254L	
White	532542	5,50
	532542L	



**Rotation Push Lock\*** Door push button with Single hole mounting. Opens by turning the knob. Door leaf thickness 1.2-19 mm

52534	25,95
-------	-------



**Point Push Lock\*** Door push button with Mounting dimension Ø 25 mm, Easy installation, matt/chrome

52531	22,30
chrome/brass	52532 22,30

Waterproof and dustproof



### Compression lock Lift & Turn

Single hole mounting. With lock cylinder, protection IP65/NEMA4. Door leaf thickness 2-12 mm

52535	95,95
-------	-------



### Rotation push lock lock

Mounting dimension 3-22 mm Easy installation, suitable for wet cell

52530	39,95
-------	-------



### Coat hook PushLock\*

for door thickness 4.0-25.4 mm Ø 33 mm

52533	25,95
-------	-------



### Twist lock

"Lift and turn" high closing force, concealed tension spring compensates for assembly tolerances.

52541	26,60
-------	-------

\*Note: Hook closes automatically. Flap cannot open by itself when push lock is open. For detailed article description see [www.reimo.com](http://www.reimo.com)

## Convenient to open with just one handle



### Furniture snap locks for door thickness 12-18 mm

Material plastic

Size 55 x 59 mm:	① Matte Chrome/Black	52498	13,95
	② Matte Chrome	52499	13,95
Size 36 x 59 mm:	③ Matt Black	52491	9,95
	④ Matt Schwarz/Chrom	52496	12,80
	⑤ Matt Chrom/Schwarz	52494	11,95
	⑥ Matt Chrom	52497	13,95

### Button sets

#### Metal version

① Frame matt, knob chrome gloss 55 x 55 mm, for lock <b>Mini</b>	53408	15,90
② Shiny chrome, 40 x 30 mm, for lock <b>Mini</b>	53403	8,70
③ Shiny chrome, 60 x 27 mm, for lock <b>Maxi</b>	53405	12,95
④ Push Lock - Brass ABS, 63 x 20 mm, for lock <b>Mini</b>		
Brass Matt	53455	7,30
<b>NEW</b> Schwarz Matt (o.Abb)	53457	6,40

#### Plastic version

⑤ Shiny chrome, 34 x 34 mm, for lock <b>Mini</b>	53402	4,20
⑥ Shiny chrome, 35 x 35 mm, for lock <b>Mini</b>	53406	4,24
Shiny chrome, 35 x 35 mm, for lock <b>Maxi</b>	53407	4,25
⑦ Shiny chrome, Ø 35 mm, for lock <b>Mini</b>	53404	4,25

### Knob and rosettes

	(not shown)		
	<b>Rosettes loose, plastic version</b>		
	Shiny chrome, round, for 16 mm wood		
	for lock <b>Maxi</b>	532791	1,95
	for lock <b>Mini</b>	532772	1,80
	Shiny chrome, square, for 19 mm wood		
	for lock <b>Maxi</b>	532792	3,55
	<b>Knob loose, plastic version</b>		
	Silver matt, round, for 19 mm wood		
	for lock <b>Maxi</b>	53278	2,50
	Shiny chrome, Ø 23 mm, for lock <b>Maxi</b>	532790	2,85
	Silver matt, round, for 13 mm wood		
	for lock <b>Maxi</b>	53277	2,95
	<b>50 pieces pack</b>	532773	64,95



**Complete push button furniture lock 37 x 37 mm**  
Frame matt, knob chrome matt.  
Incl. lock **532702 8,90**



**Flap lock Magnet-Lock**  
for flap thickness 13, 16 and 19 mm  
**53456 5,95**

**Push button furniture lock 42 x 42 mm**  
Frame and knob dark gray matte  
**532703 9,49**  
**Suitable lock for 532703**  
Castle **Maxi** **53416 5,95**



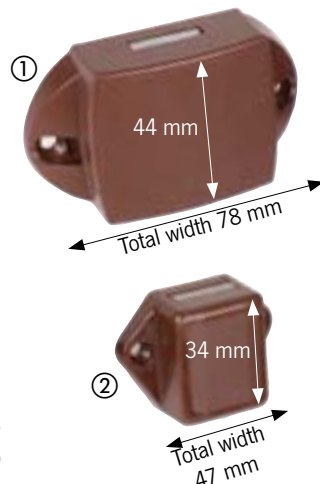
**Push Lock Locks loose - for panel thickness 12-19 mm**  
**Lock and knob freely combinable**

**Freely combinable with many buttons**

- Various design combinations possible
- For 14-16 mm panel thickness (unless otherwise specified)
- For individual expansion

Basis are the locks, which you can provide with different knobs and rosettes. Please always order knob & rosette or knob set to match. Also order strike plate extra.

① castle <b>maxi</b>	53416	5,95
② lock <b>mini</b>	53415	4,50



### Strike plates

#### Plastic version

① With damping Screw mounting. Material: ABS, W 53 x D 16 x H 11 mm.	53419	1,10
② Screw mounting. Material: ABS, W 49 x D 11 x H 6 mm.	534190	0,90
③ W 26 x D 28 x H 6 mm.	A1332750	5,08
④ W 53 x D 28 x H 10 mm.	A1311380	0,60

#### Metal version

⑤ Screw mounting. Material: steel W 35 x D 13 x H 9 mm.	534191	1,35
⑥ Screw mounting. Material: steel W 30 x D 23 x H 10 mm.	52460	0,70





## BOW HANDLES, LATCHES, FLAP DAMPERS



### Door / flap dampers

Prevents loud banging of the door when closing. Damper incl. screw-on bearing. Elipse shape, plastic, color: gray **532480 4,70**



- ① **Metal handle**, 173 x 22 mm, hole spacing 160 mm **53440 3,70**  
 ② **Metal handle** from zamac **53441 24,70**



### Tension band fastener with grip tab

**52544 10,80**

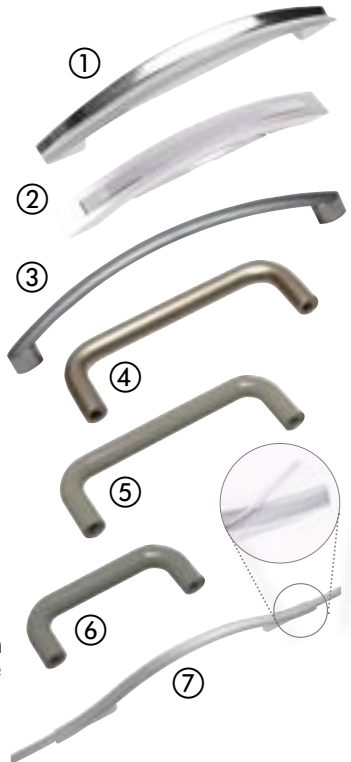


### Tension band fastener with toggle handle-

Closure **52543 12,70**  
 Pin **52545 3,60**

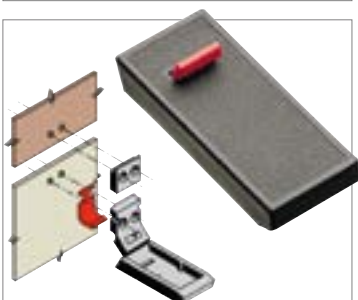
### Bracket handles

- ① **Metal handle**, 200 x 25 mm, hole spacing 160 mm **53414 10,90**  
 ② **Plastic handle**, 188 x 20 mm Hole spacing 128 mm **53411 6,30**  
 ③ **Plastic handle silver matt** Hole spacing 160 mm **293205 15,20**  
 ④ **Stainless steel handle matt** Hole spacing 96 mm **53122 6,90**  
 ⑤ **Nylon handle medium gray** Hole spacing 96 mm **53118 11,50**  
 ⑥ **Nylon handle light gray** Hole spacing 64 mm **53112 6,90**  
 ⑦ **Bridge handle silver** 265 x 13 mm For gluing in the pilaster strip profile 534090. hole spacing 160 mm **53409 3,60**  
**53409L**



### Locking stop

Screw-on, secures doors up to 17 mm thick. Also as refrigerator lock. Simple Brown **532650 3,95**



### Closure securing spring

Prevents unintentional opening of a flap **52542 4,80**



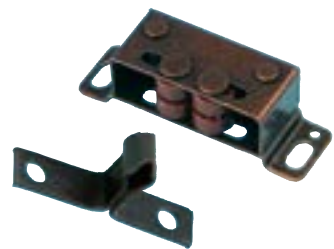
### Furniture flycatcher

Holds flaps and drawers **35236 3,15**



### Cara-Snap (e.g. for handle ③ - ⑥)

Locking system for storage compartments. Including handle catch, counter bearing and stop. Screw-on latch lock with pull release. Screw mounting. Backset 16 mm **53379 12,-**



### Metal catcher

Tumbler for drawers, metal 2 pieces **532490 1,15**



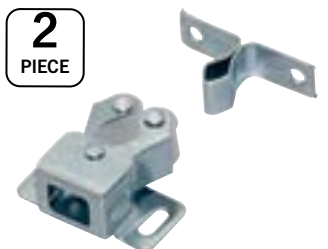
### Double Bullet Flycatcher

For drawers and flaps. Nickel plated with chrome steel balls 43 mm. 2 pieces **532551 10,70**  
**53255**



### Plastic snapper

Tumbler for drawers. 2 pieces **532501 3,95**  
**53250**



### Double roller catcher

Metal version, galvanized 2 pieces **532502 4,40**  
**532502L**



### Mini Latch

Opens and closes by simply pressing the flap. 2 piece **532521 5,80**  
**53252**



### Snap lock

Simple snap closure made of plastic **52539 13,55**



### Plastic snapper

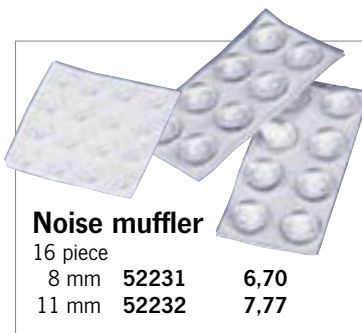
With self-adjusting latch. With closing angle. Body, latch, guide and closing angle: nylon. Spring: stainless steel. **52540 9,70**



### ① Tongue lock

Galvanized steel, f. 8 mm square socket wrench. Dimensions: 100 x 19 x 10 mm **53246 7,30**

② Socket wrench for tongue lock 7-10 mm **53247 7,99**



### Noise muffler

16 piece  
8 mm **52231** 6,70  
11 mm **52232** 7,77



### Felt pad

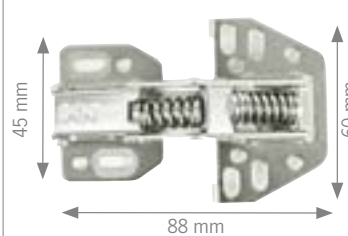
20 piece  
**52230** 2,95



### High flip hinge - Soft Closing System, 1 pair

With the Kinvaro T-Slim rotary flap system, you get the full opening experience with a very thin, efficient fitting. And it's not only compact, but also powerful. Can be used as a body hinge or recessed.

Set for left + right **531940** 74,95



### Spring hinge

Sturdy metal construction. 92° opening angle. Springs keep flaps open + closed.

2 pieces, with compression springs **53229** 7,95  
2 pieces, with additional softclosing system **53341L** 9,95

Fig. 53341: Open



Fig. 53341: closed



### Click-On Pot Hinges

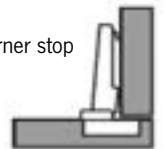
- Mini hinge Ø 26 mm, depth 12 mm
- Click-on mechanism for easy mounting
- Adjustable in 3 dimensions
- With mounting plate
- Heavy duty: light alloy, sand casting anodized

- ① Hinge for corner stop  
with mounting plate 2 mm **53315** 6,90
- ② Hinge for center wall stop  
with mounting plate 2 mm **53289** 22,60
- ③ Hinge for internal stop  
with mounting plate 4 mm **53317** 7,10
- ④ Cross mounting plates  
for above hinges. Heavy-duty design made of light metal, sand casting silver anodized. With threaded hole M6. Mounting plate 2 mm high **53111** 2,75  
Mounting plate 4 mm high **53319** 2,60
- ⑤ Bracket for furniture hinges with cross plate  
Increases the distance between side panel and hinge by 30 mm. For example, in combination with hinge 53217 and aluminum profile 52216. **533170** 9,90



### i Hinge variants

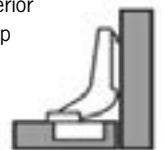
Corner stop



Center wall stop



Interior Stop



### Hinge with springs

Special design made of chromed steel  
1 piece **531961** 4,70  
**531961L**



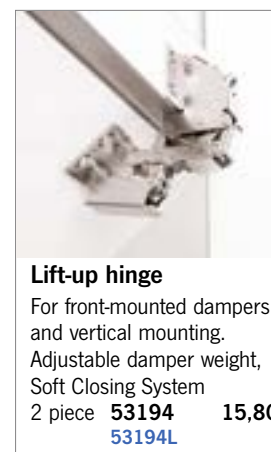
### Hinge

Reinforced version for large flaps  
1 piece **531951** 5,95  
**531951L**



### Special hinge

With 2 springs, for small to medium flaps  
1 piece **531971** 5,20



### Lift-up hinge

For front-mounted dampers and vertical mounting. Adjustable damper weight, Soft Closing System  
2 piece **53194** 15,80  
**53194L**



### Lift-up hinge

For front-mounted flaps and 90° mounting. For flaps up to ca. 2 kg, Soft Closing System  
2 piece **531941** 16,80  
**531941L**



## FURNITURE HINGES

**4 Piece**




**Universal hinges single cranked**  
for surface mounted doors, one lobe cranked. Steel, 4 pieces, Length 50 mm  
brass plated polished  
53190 6,30  
nickel-plated 53191 14,70

**4 Piece**



**Universal hinges double cranked**  
for surface-mounted and inset doors, cranked. one lobe cranked  
Length 50 mm  
nickel-plated 532684 19,20  
53268  
burnished 532844 8,40  
53284

**4 Piece**



**Universal hinges straight**  
one lobe cranked. 4 piece

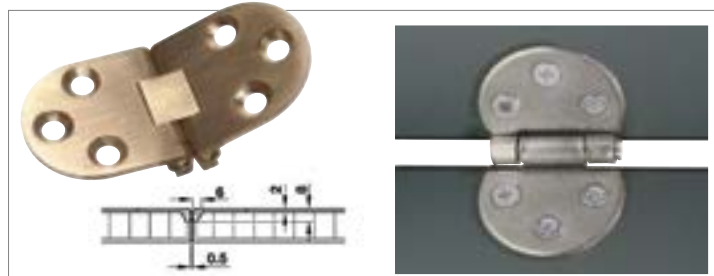
<b>Hinge 50 mm</b>		<b>Hinge 38 mm</b>	
galvanized	532824 5,30 53282	galvanized	532174 5,70 53217
nickel-plated	532674 8,30 53267	nickel-plated	532164 8,60 53216
brassed	532834 6,40 53283	burnished	532024 5,90 53202
burnished	532034 5,90 53203		

**from 17,10**



**Angle fitting**  
Table top holder aluminum.  
natural anodized 53358 17,10  
black anodized 53359 17,90


Alternative mounting options



**Table hinge**  
Brass matt, for flush mounting, 65 x 30 mm  
1 piece 532192 12,50  
2 piece 532193 27,30

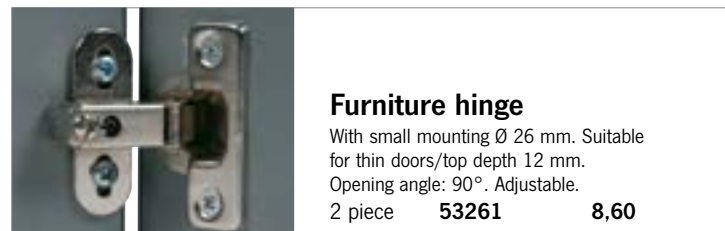
**Table hinge**  
for folding table tops for surface mounting. 30 mm wide.  
2 piece 53264 7,95

**4 Piece**

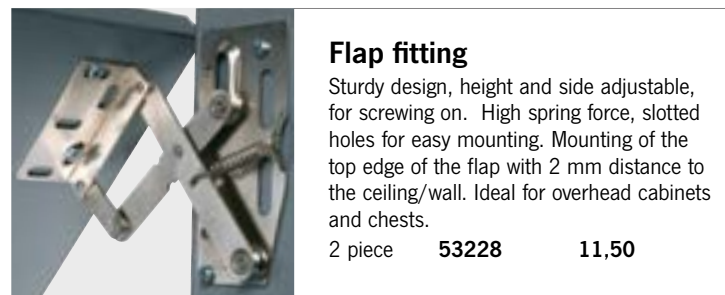


**Film hinge**  
4 pieces, 40 mm wide  
White 532084 3,50  
53208  
Brown 532094 3,50  
53209  
Black 53364 2,85  
53364L

**Piano tape**  
for 16 mm plates. 175 cm long  
stainless steel.  
532051 17,50




**Furniture hinge**  
With small mounting Ø 26 mm. Suitable for thin doors/top depth 12 mm.  
Opening angle: 90°. Adjustable.  
2 piece 53261 8,60



**Flap fitting**  
Sturdy design, height and side adjustable, for screwing on. High spring force, slotted holes for easy mounting. Mounting of the top edge of the flap with 2 mm distance to the ceiling/wall. Ideal for overhead cabinets and chests.  
2 piece 53228 11,50

**2 Piece**



**Special hinge for semi-recessed doors**  
Robust; powder-coated; color-matched to the door liner on page 659.  
Can be used on the right or left by repositioning.

<b>Special hinge left, 2 pieces</b>		<b>Special hinge right, 2 pieces</b>	
Light gray	523012 6,10 52301	Light gray	523002 6,10 52300
Brown	5230102 6,10 523010	Brown	5230002 6,10 523000
Dark gray	5230112 6,10 523011	Dark gray	5230012 6,10 523001
Mid gray	5230142 6,10 523014	Mid gray	5230042 6,10 523004

## Connector for furniture making

**10**  
Piece



### Corner connector

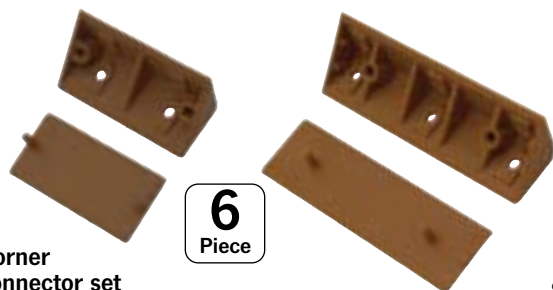
4-hole, plastic. Easier and more accurate to mount than a sheet metal angle, with cover cap. 10 piece

Gray	<b>53230</b>	<b>8,40</b>	Light brown	<b>532301</b>	<b>8,40</b>
	<a href="#">53230L</a>			<a href="#">532301L</a>	
Brown	<b>532300</b>	<b>8,40</b>	White	<b>532303</b>	<b>8,40</b>
	<a href="#">532300L</a>			<a href="#">532303L</a>	

### Corner connector mini

2-hole, plastic. Light gray With cover plate. 10 piece

<b>53235</b>	<b>4,85</b>
<a href="#">53235L</a>	



### Corner connector set

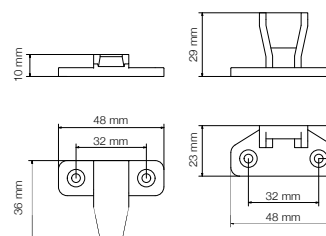
Universal corner connector with cover plate for building benches, cabinets, storage boxes, etc. For screws up to Ø 4 mm:

W 60 x D 21 x H 21 mm	W 100 x D 21 x H 21 mm
6 piece <b>53233</b> <b>12,80</b>	6 piece <b>53234</b> <b>14,50</b>

### Square furniture connectors, 10 piece

Brown	<b>532310</b>	<b>4,20</b>
	<a href="#">532310L</a>	
White	<b>532313</b>	<b>4,20</b>
	<a href="#">532313L</a>	

**10**  
Piece



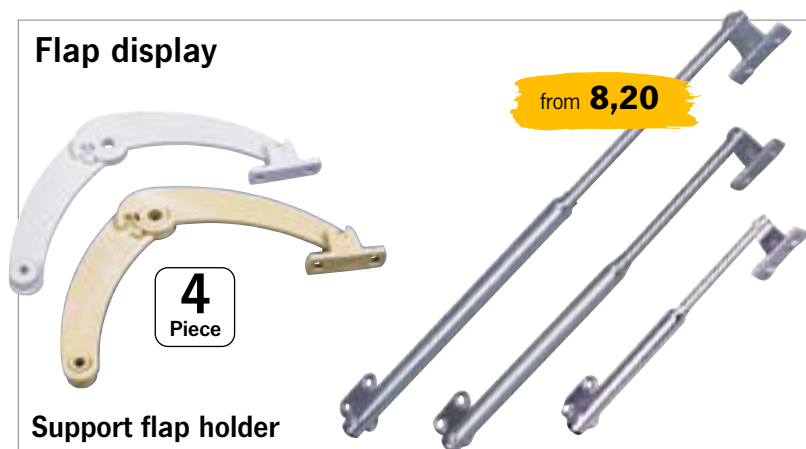
### Furniture connector 0915

- Very compact and resistant
- Precise snap lock

The new 0915 interwall joint is designed for a minimal aesthetic effect, available in black color. Very easy to assemble: it is enough to connect and screw the male and female in the proposed position (screws are not supplied).

4 piece	<b>532002</b>	<b>11,70</b>
16 piece	<b>532003</b>	<b>29,95</b>

## Flap display



**4**  
Piece

### Support flap holder plastic

for light flaps up to ca. 500 mm width. 4 pieces Light gray

<b>532101</b>	<b>6,60</b>
<a href="#">532101L</a>	

Light brown	<b>532102</b>	<b>6,10</b>
	<a href="#">532102L</a>	

### Support flap holder metal

Keeps even large flaps closed by itself with spring force, no guard locking required. Can be used on the right or left:

140 mm	<b>53211</b>	<a href="#">53211L</a>	<b>8,20</b>
200 mm	<b>53212</b>	<a href="#">53212L</a>	<b>6,50</b>
250 mm	<b>53213</b>	<a href="#">53213L</a>	<b>7,40</b>

### SESAM II display unit

With galvanized steel compression spring. Plastic black

<b>53227</b>	<b>3,10</b>
--------------	-------------



**4**  
Piece

### Chair angle metal

for fixing furniture to the vehicle body. 4 pieces

Angle, 4 countersunk screw holes 25 x 25 x 15 mm

<b>532264</b>	<b>8,95</b>
---------------	-------------

Angle heavy for screws up to Ø 6 mm, 50x 50x 34 mm

<b>532204</b>	<b>6,95</b>
<a href="#">53220</a>	

### Clothes rail pullout

Nickel-plated steel, length 250 mm

<b>53325</b>	<b>8,40</b>
--------------	-------------

### Gas damper 100N

Stand for heavy flaps. With 2 screw-on brackets.

Length 275 mm	<b>53218</b>	<b>14,95</b>
---------------	--------------	--------------



### Gallery tube

Ø 10 mm

Length 100 cm	<b>53320</b>	<b>5,95</b>
---------------	--------------	-------------

### Pot connector

Ideal for cabinet construction. Concealed, flush 90° connections. Incl. cover caps. Ø 25 x H 8 mm.

Light brown 10 pcs.	<b>532870</b>	<b>5,60</b>
Light brown 50 pcs.	<b>53287</b>	<b>15,30</b>
Mid gray 10 pcs.	<b>532875</b>	<b>5,60</b>
Mid gray 100 pcs.	<b>532874</b>	<b>28,40</b>



## COAT HOOKS AND FOLDING CONSOLES



**① Structure-Folding hook**  
Hinged hook in chrome gloss. Plastic screw-on bearing, zamak hook, length 8 cm  
533340 14,95  
Length 17 cm  
533341 21,30

**② Installation folding hook**  
for embedding in the wall  
Dimensions: 8.8 x 2.2 x 1 cm  
60126 13,80

**③ Coat hook**  
foldable, on plastic base, hooks made of zamak, silver colored matt  
Dimensions: 7 x 2,5 cm  
53356 13,95

**④ Coat hook**  
foldable, chrome-plated  
Dimensions: 8 x 2 x 1.3 cm  
53357 7,40



**Wall hook**  
with fold out hooks  
Dimensions: 7.5 x 7.5 x 1.5 cm  
Chrome 533381 11,95  
533381L  
Silver matte 53363 11,50  
53363L



**Wall hook**  
Dimensions: 5.3 x 5.3 x 1.3 cm  
Chrome 601290 8,95  
601290L  
Silver matte 60129 8,95  
60129L  
Black 53590 8,50  
53590L



**Coat hook**  
chrome high gloss  
Dimensions: 5 x 5 x 4.5 cm  
53354 9,50

**Coat hook metal**



52 mm  
Ø 25 mm 32,4 mm  
Chrome-plated 53439 6,90

48 mm 27 mm  
81 mm  
Chrome-plated 53438 9,95

59 mm  
18 mm 25 mm  
Chrome-plated 533401 4,95  
Black 533402 5,20

from 1,95

Dimensions 65 x 70 mm, chrome plated 53333 3,95

Silver 53342 1,95

Ø 6x W 7x D 5 cm Chrome-plated 53340 18,90

**Plastic hook**



Hewi, Ø 40 mm, light gray 53328 9,95



56,3 mm  
44 mm 27,1 mm  
ABS, Chrome plated 53435 3,50


## Consoles for foldable work surfaces




**① Metal folding brackets**  
① With latching spring, length: 250 mm galvanized 53374 20,20  
② Folding hinge in the middle assorted colors, length: 330 mm 53322 34,95

**5,55**

**Plastic bracket** swivels sideways, length: 190mm  
Brown 53300 5,55  
Gray 53302 5,55



**Aluminum folding console** with one-hand operation, very high load capacity




**Length 150 mm**, load capacity > 60 kg  
Silver 533132 34,95

**Length 252 mm**, load capacity > 55 kg  
Silver 53312 38,30  
Black 533601 37,95

**Length 402 mm**, load capacity > 60 kg  
Silver 53313 62,95  
Black 533602 58,70

**Length 549 mm**, Load capacity > 65 kg  
Silver 533131 69,70  
Black 533603 68,50

**One-hand operation:** Simply lift and disengage upper tube piece, then lower flap.




**Ventilation grille**  
Grille with rotatable blades. Outer Ø 164 mm, mounting Ø 128 mm, installation height ca. 10 mm.

White	53033	4,90
Black	53034	5,50




**Ventilation grille with shaft**  
Outer dimension 94 x 93 mm, mounting Ø 78 mm. Shaft height ca. 61 mm. Surface height ca. 10 mm.

White	53035	4,90
-------	-------	------



**Ventilation grille**  
White screw-on grille with slats. UV resistant ABS. Sealant is already applied. Height of construction ca. 14 mm. Incl. screws.

142 x 80 mm	53036	5,50
142 x 127 mm	53037	5,90
264 x 127 mm	53038	6,90



**Ventilation grille round**  
Outer Ø 145 mm, inner Ø 120 mm

White	53012	6,60
Outer Ø 100 mm, inner Ø 76 mm		
Brown	53007	6,30
White	53008	6,10

**Furniture ventilation rosette**  
For cabinet ventilation, prevents Condensation in cabinets

Ø 60 cream	53016	1,10
Ø 60 Grey	53017	1,10
Ø 32 cream	53018	1,10
Ø 32 Gray	53019	1,10



**Sliding fan**  
Plastic, 8 holes (countersunk), 250 x 70 mm, Ivory

53022	6,60
-------	------


**Sliding fan**  
Plastic, 385 x 220 mm, Ivory

53023	12,90
-------	-------



**Floor ventilation**  
Plastic, natural, outer Ø 60 mm, vent = L 7 cm²  
Shaft length 55 mm


53042	4,40
-------	------



**Aluminum**

**Ventilation grille luxury**  
For refrigerator or furniture ventilation. 400 x 80 mm, aluminum

White	53021	26,80
-------	-------	-------



**Furniture ventilation grilles and supply air for heating systems**  
Plastic, silver

205 x 40 mm, oval	53040	6,10
250 x 50 mm, angular	53041	5,30




**Surface-mounted ventilation grille**  
Plastic, 365 x 170 mm, Ivory

53025	19,70
-------	-------



**Plastic ventilation grille with mosquito net** White 150 x 200 mm

53027	7,50
-------	------



**Aluminum gill plates for external ventilation** f. Refrigerator ventilation or similar.

① 255 x 115 mm	53000	13,50
② 360 x 115 mm	53001	13,60
③ Gill plate for gas box ventilation. 265x205 mm, ventilation cross-section 100 cm². Aluminum high gloss anodized.	53004	19,95

**Air distribution in motorhome**

- Plastic supply and exhaust air rail
- Simply connect via T-ends without tools
- High load capacity
- Mounting possible with metal and Spax screws
- Air-technical connection possible through over-pressure/underpressure room
- Commercially available flat duct systems are suitable as air ducts

Dimensions: L x W x H 603 x 14 x 25 mm

53028	20,90
-------	-------

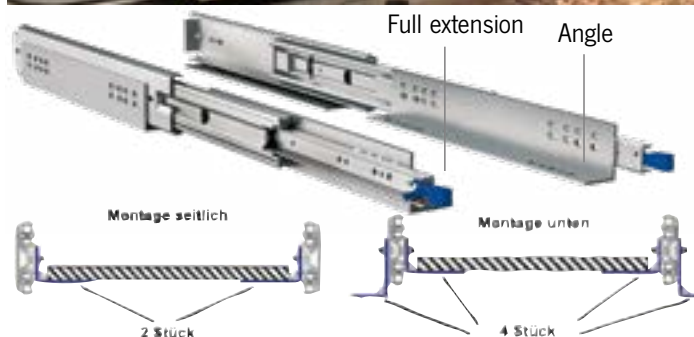



MADE IN GERMANY

Mounting example on bench

# Rollout Slider Giant

The heavy duty slides for extreme loads



## Full-extension runner with mechanical locking\*

in the retracted/extended state. Steel. Can be loaded up to max. 227 kg. Cannot be unhooked.

559 mm, pair	533000	99,95
711 mm, pair	533001	139,95
965 mm pair	533002	179,90

### Angle for mounting full extension:

559 mm, 2 pieces	533004	23,95
711 mm, 2 pieces	533005	29,95
305 mm, piece	533003	12,95



## Full extension galvanized steel, max. 300 kg

762 mm, pair	533802	119,-
--------------	--------	-------

- High load capacity
- Perfect for building rear extensions



## Single extension for heavy load

can be loaded up to max. 100 kg. Not detachable.

500 mm, pair	53381	76,10
700 mm, pair	53380	83,30



## Full-extension Soft-Roll, steel

can be loaded up to max. 110 kg. Not detachable.

700 mm, pair	533006	69,90
--------------	--------	-------



## Full-extension steel, up to a maximum of 200 kg

With 150 % extension, extendable up to 1050 mm

700 mm, piece	533801	269,90
---------------	--------	--------



## Full-extension steel, up to a maximum of 400 kg

Extendable in both directions, ideal to load rear garages. 930 mm, piece

533803	299,90
--------	--------

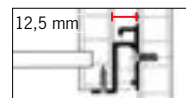


Optional handle (500 mm) with latching mechanism, suitable for drawers. (Suitable for all pull-outs, except forr\*)

533800	57,90
--------	-------

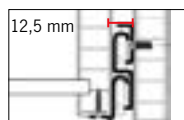
## Drawer pulls

- Narrow design, together only ca. 25 mm wide
- Loadable up to 30 kg
- Very good running properties, easy to unhook



### Partial pullouts detachable

300 mm, pair	53120	15,70
350 mm, pair	53378	13,70
400 mm, pair	53376	10,60
550 mm, pair	53126	14,40



### Full extension slides detachable

300 mm, pair	53370	34,70
400 mm, pair	53371	37,60
500 mm, pair	53372	38,70



## Full extension drawers

Load capacity 30 kg, Soft-Close-Automatic

300 mm, pair	53113	39,65
350 mm, pair	53102	39,95
400 mm, pair	53105	45,95
450 mm, pair	53103	46,95

**Pick-up catch set** (without illustration)  
for these slides 53114 9,-



# THE LUGGAGE BUTLER FOR CAMPER + BOX CAR

## Luggage drawer for convenient loading



Luggage drawer in California Ocean



from **479,-**

### Easy and convenient loading and unloading of your vehicle with built bed

- Load capacity of 130 kg per pair
- Fastening covers all vehicle-specific rail spacings
- Mounting of the frame takes place in the floor rails
- Special rear extensions for VW California Coast/Beach/Ocean and Multivan

The rear extension makes it easier to load and unload your vehicle when the rear seat is converted to a bed and utilizes all of the remaining trunk space. The frame of the rear extension is connected to the vehicle at four points. Supplied as a kit.

**Scope of delivery:** Including mounting and fixing material, belt eyes, pull-out rails, base plate and mounting instructions.

Suitable e.g. for the following vehicles:	Outer dimension Width x length	Footprint Width x length	Item no:	Price
VW Avantgarde VW TrioStyle with canister system	930 x 600 mm	875 x 557 mm	50512	479,-
Mercedes TrioStyle Renault TrioStyle VW TrioLoft VW TrioStyle only furniture	1050 x 600 mm	995 x 557 mm	50513	489,-
Ford Triostyle VW CityVan VW Weekender Plus	1170 x 600 mm	1115 x 557 mm	50514	499,-
Mercedes CityVan and Weekender Renault Weekender VW Weekender	1220 x 600 mm	1165 x 557 mm	50515	499,-
California Coast/Ocean as of 2003	995 x 750 mm	940 x 709 mm	50518	
California Beach, Multivan	1075 to 1200 x 750	1020 x 709 mm	50519	499,-



### Furniture pullouts

#### Partial extension ball bearing mounted

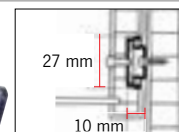
large extension length and drawer width, Guide can be milled in. Bis 12 kg loadable, not detachable.

278 mm, pair	53382	11,90
342 mm, pair	53383	11,95

#### Partial extract

Galvanized steel, ball bearing mounted. Can be unhooked by means of a separating lever, with retaining catch for locking in the closed position, can be loaded up to 35 kg. With self-closing device.

400 mm, pair	53387	27,30
--------------	-------	-------



#### Drawer pull for retrofitting

Mounts to the drawer body. Automatically retracts the drawer. Carcase depth min. 300 mm. Length 220 mm, plastic, Color: gray.

Pair	53043	11,10
------	-------	-------



Fig. similar



**Roller shutter door complete set**

- For the construction of a roller shutter door opening upwards
- For maximum door size of 100 cm height and 60 cm width
- Enables opening even in confined spaces
- Complete with cut to size roller shutter, rails and screen

The guide rails, roller shutter mat and retractable panel can be cut to the desired door size and cabinet depth. Material: plastic.

**Scope of delivery roller shutter door set:**

- 1 x Roller shutter mat with handle, H 100 x W 60 cm,
- 4 x Guide rails for screwing on, L 100 cm,
- 4 x Guide bends 90° to screw on,
- 1 x Drive-in screen, L 100 cm.

Silver	53044	90,50
Structure, Beige	53045	96,20
Matte black	53047	89,90

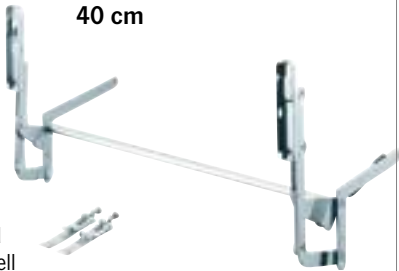


**Flaps lifting fitting**

- Hinge system for parallel lifting of flaps
- Space saving opening in narrow aisles
- Can also be used with wall cabinets (note space requirement)
- Width can be shortened as needed from 60 to 120 cm
- For flap heights up to max. 40 cm

**Upward swinging fitting HSB**

The HSB swivel fitting can be used to open flaps in the foot area as well as flaps of wall cabinets smartly. For wall cabinets, make sure that there is enough space above the cabinets. The weight of the flap front must not exceed 7 kg.



53362



**Mini pharmacist extract**

- Perfect for narrow cabinets
- Drawers with ball bearings and soft-close system
- Chromed metal frame with railing
- Furniture front individually attachable and adjustable



View of the extract from the back

**Pull-out frame with 2 shelves** The pull-out frame is supplied complete with the pull-out rails. It is mounted on the right side inner wall of the cabinet. The cabinet body must have minimum internal dimensions of H47xW12xD28 cm. The cabinet front is mounted on the shelves and can be aligned with screws.

52320

155,-



Small foot plate



Large foot plate



Steplessly lowerable



Height adjustable, gas spring supported



Rotating foot



Table top shift



Screwable



330,-

Height 35.0 - 71.0 cm

Height 34.5 - 70.5 cm

Height 32.5 - 68.5 cm

Height 33.7 - 70 cm

**Single column lift table  
Primero Comfort HVD**

Color: silver-grey

Infinitely variable height adjustment from 350-710 mm, with plate shifting, swivel base, screwable.

Weight: 12,3 kg

570861

535,-

**Single column lift table  
Primero Comfort HVK**

Color: silver gray

Infinitely variable height adjustment from 345-705 mm, with plate-displacement rigid, screwable.

Weight: 10,9 kg

570860

459,-

**Single column lift table  
Primero Comfort HSK**

Color: silver gray

Infinitely variable height adjustment from 325-685 mm. Can be screwed to the floor. Incl. swivel fitting.

Weight: ca. 9.5 kg

570862

330,-

**Single column lift table  
Catch**

Color: Anthracite

Infinitely variable height adjustment from 337-700 mm. Free standing. Incl. swivel fitting.

Weight: ca. 13.4 kg

57128

502,-



282,-

**Single column lift table Primero  
Comfort HPK**

Color: Silver gray Infinitely variable height adjustment from 310-670 mm, screwable. Weight: 7,7 kg

570850

282,-

**Single column lift table Primero  
Comfort HPG**

Color: silver gray

Infinitely variable height adjustment from 315-675 mm, free-standing. Weight: 13.3 kg

570851

377,-

**Single column lift table Catch**

Color: Anthracite

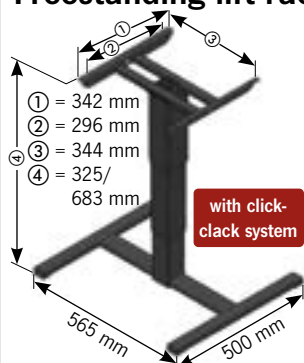
Stepless height adjustment from 310-670 mm, free-standing. Weight: 13.6 kg

57127

364,-



## Freestanding lift racks for motorhome and caravan



with click-clack system

**Height 32.5 - 68.3 cm**

### Freestanding lift frame

Height min. ca 325 mm, max. ca 683 mm. Height adjustable. Lightweight, angular tubular screen. Simple operation. Color: anthracite.

571210 235,-



**262,-**

**Height 32 - 69.5 cm**

### Single column lift table frame

Height min. ca. 320 mm, max. ca. 695 mm. Height adjustable, free standing. Weight 11 kg. Color: cast gray, stroke 375 mm.

571061 262,-



with click-clack system

**235,-**

**Height 32 - 68 cm**

### Freestanding lift frame

Height min. ca. 320 mm, max. ca. 680 mm. Height adjustable, more legroom due to slim tube cover, easy operation. Weight ca. 10 kg. Color: anthracite, stroke 360 mm.

57121 235,-



**224,-**

**Height 32 - 69.5 cm**

### Freestanding lift frame

Height min. ca. 320 mm, max. ca. 695 mm. Height adjustable, more legroom due to slim tube cover, weight ca. 10 kg. Color: cast gray, stroke 375 mm.

57122 224,-

## Single column lift racks with twist and shift for motorhome and caravan



**302,-**

**Height 34 - 71.5 cm**

### Lift frame

Sliding table top, table rotation 360°. Longitudinal displacement ca. 270 mm, transverse displacement ca. 235 mm. Weight ca. 12 kg. Color: anthracite, stroke 375 mm.

57123 302,-



**309,-**

**Height 35.5 - 73.5 cm**

### Lift frame

Height min. ca. 355 mm, max. ca. 735 mm, height adjustable (pushbutton) and rotatable, transverse displacement (ca. 190 mm) and longitudinal displacement (ca. 235 mm). Light, angular tube cover, color: anthracite.

57118 309,-



**291,-**

**Height 33.5 - 71.5 cm**

### Lift frame

Height min. ca. 335 to max. ca. 715 mm. Height adjustable (pushbutton) and rotatable, transverse displacement (ca. 370 mm) and longitudinal displacement (ca. 300 mm). Light, angular tubular screen, color: anthracite.

57119 291,-



with click-clack system

**291,-**

**Height 34.2 - 71.2 cm**

### Lift frame

Sliding table top, table rotation 360°. Longitudinal displacement ca. 270 mm, transverse displacement ca. 230 mm. Weight ca. 12 kg. Color: anthracite, stroke 370 mm.

57124 291,-



**381,-**

**Height 33.5 - 73.0 cm**

### Single column lift rack

Height min. ca 355 mm, max. ca 730 mm. Height adjustable, rotatable; free-standing. Transverse and longitudinal displacement with central locking system. Weight 13 kg. Color: Cast gray / black Stroke 375 mm.

57116 381,-



**403,-**

**Height 33.5 - 71.0 cm**

### Single column lift rack

Transverse and longitudinal displacement with central fixing, stroke 375 mm. Adjustable from 335 mm - 710 mm, longitudinal displacement ca. 230 mm, transverse displacement ca. 180 mm.

57113 403,-



### New click-clack function

When converting the table frame from dining position to bed position, first pull the table top up a little and then push it into the lowest position. From the bed position, simply pull the table frame up as far as it will go and then pull it back down about 2 cm. The frame locks itself independently.

## Fixed pillars for motorhome and caravan

### Single column table frame rigid

Sliding table top, table rotation 360°. Longitudinal displacement ca. 330 mm, transverse displacement ca. 185 mm, weight ca. 5 kg. Color: cast gray, height 730 mm.

57125

314,-

314,-

extremely light  
Aluminum frame

### Single column table frame rigid

Sliding table top and backdrop for fold-out table top. Table rotation by 360°. Longitudinal displacement ca. 215 mm, transverse displacement ca. 300 mm, weight ca. 5 kg. Color: old nickel, height 700 mm.

57161

314,-

extremely light-  
weight aluminum  
frame

**CARBEST**  
INNOVATIONS FOR MOBILE LIFE



folded  
together



Height folded out:  
66.3 to 70.3 cm

**NEW**  
2023

### Lifting table frame in black

- Folding mechanism
- Simple height adjustment
- Fixation to the floor possible
- Length 60 cm, foot width 59.3 cm

Lifting table frame in black, with folding mechanism by operating lever. Allows easy height adjustment from table to bed frame. Can also be fixed to the floor. Length: 60 cm, foot width 59,3 cm, height: 30,3 cm / 70,3 cm, weight 8,5 kg. Scope of delivery: lifting table frame (without table top), incl. floor fixation

Available as of Q3/2023

57011

135,-

## Turn out table feet in 2 heights

- Turn out mechanism for table extension through lower plate
- Subdivision of the foot for bed construction
- Color: Silver

Height to lower edge of upper table top 700 mm, detent point at 0°, 135°, 180°, 225°

57163 119,-

Height to lower edge of upper table top 756 mm, detent point at 0°

57162 119,-



### Two column lift table

Transverse and longitudinal displacement with central fixation, stroke 375 mm, adjustable from 335 mm - 710 mm, longitudinal displacement ca. 250 mm, transverse displacement ca. 230 mm

57110

662,-

662,-

Height 33.5 - 71.0 cm

## ① Lift table frame

Folding mechanism. Height 30 - 70 cm. Easy height adjustment. Length: 60 cm, foot width: 60 cm.

Light gray 57060 198,-

Brown 570600 191,-

Length: 75 cm, foot width: 60 cm.

Light gray 57062 199,-

Brown 570620 202,-

Anthracite 570621 210,-

## ② Table widening fitting

The extendable fitting can be used to hold folding table tops. When the table top is folded, the fitting can be pushed in again.

Aluminum, bronze anodized and plastic black,

length: 250 mm 57025 9,95

## ③ Height extension

Level compensation up to ca. 8 cm per set.

Brown 570650 10,95

## ④ Brake for lift table frame

Prevents slippage of the table.

Light gray 57066 28,50

Brown 570660 26,90

Height 30.0 - 70.0 cm



Height folded out:  
70 cm

In 2 lengths: 60 cm and 75 cm

## ⑤ End caps for lift table base

Spare part. Made of plastic for lifting table frame metal

2 piece 57069 8,40

## ⑥ Pressure spring for lifting table frame

Spare part 570690 19,95



## TABLE COLUMNS AND SLIDING HARDWARE



① Van wall folding table  
height adjustable  
600x460 mm 57003 292,-

② Foldable table leg  
anodized aluminum,  
height: 721 mm 57004 245,-

from 245,-

**LIPPERT**

Technical drawing showing dimensions: 721 mm, 340 mm, 480 mm, 450 mm.



**Sliding fitting**  
suitable for table column 57138, 57044, 57046.  
57137 63,95

**Sliding fitting**  
not suitable for table column 57191. one-hand operation, dimensions: 350 x 251 mm  
57040 114,-

**zwaardvis**



① Table column  
for large table tops with rotating table support and anodized screw-on rosette at the bottom. Very stable, column Ø ca. 60 mm.  
Height ca. 67 cm  
57044 165,-

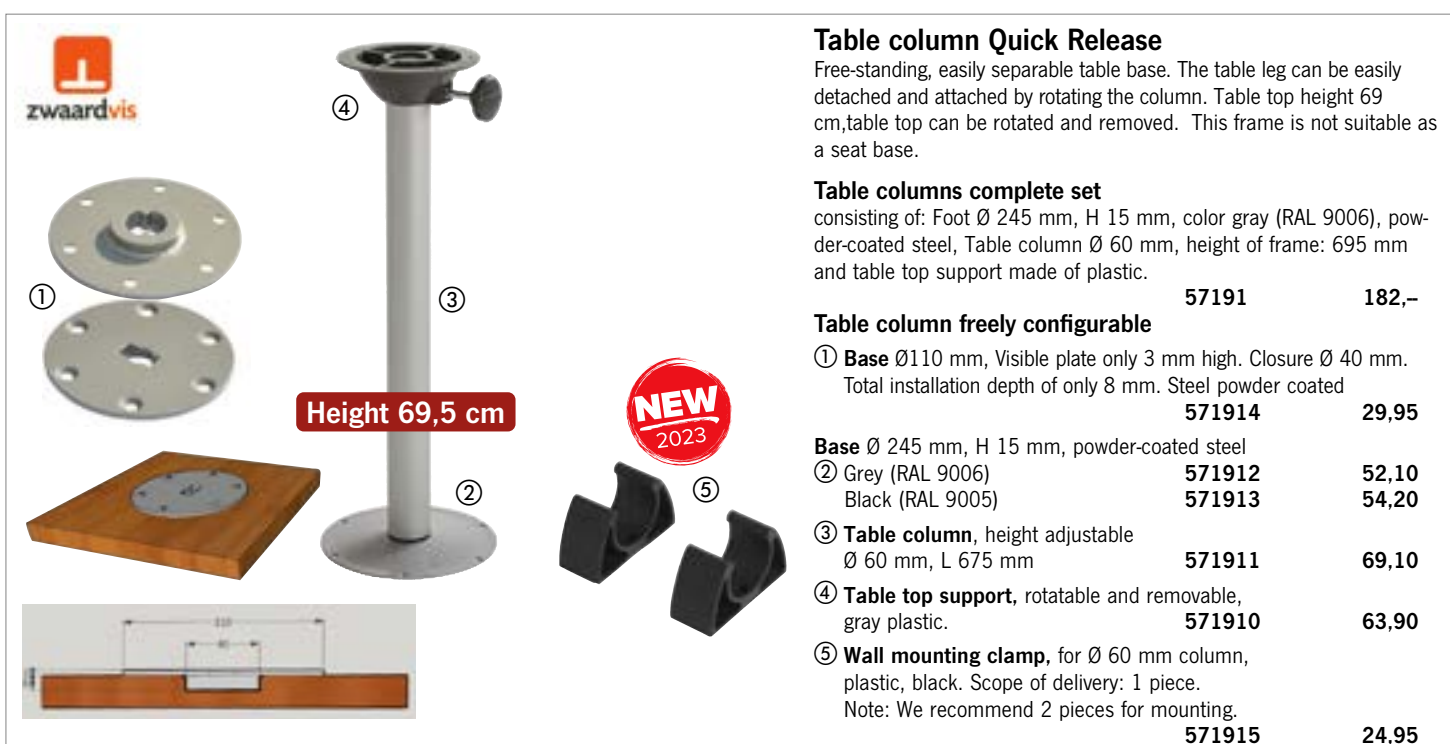
② Retractable table column  
Height adjustment by gas pressure damper from ca. 36.5 - 70.5 cm.  
Column Ø ca. 60 mm. Table top support rotatable, for large table tops. Column goes a. 12 cm through the floor  
57046 274,-

**zwaardvis**

retractable

Height 67 cm

Height 36.5 - 70.5 cm



**Table column Quick Release**  
Free-standing, easily separable table base. The table leg can be easily detached and attached by rotating the column. Table top height 69 cm, table top can be rotated and removed. This frame is not suitable as a seat base.

**Table columns complete set**  
consisting of: Foot Ø 245 mm, H 15 mm, color gray (RAL 9006), powder-coated steel, Table column Ø 60 mm, height of frame: 695 mm and table top support made of plastic.  
57191 182,-

**Table column freely configurable**

① Base Ø110 mm, Visible plate only 3 mm high. Closure Ø 40 mm.  
Total installation depth of only 8 mm. Steel powder coated  
571914 29,95

**Base Ø 245 mm, H 15 mm, powder-coated steel**

② Grey (RAL 9006) 571912 52,10  
Black (RAL 9005) 571913 54,20

③ Table column, height adjustable  
Ø 60 mm, L 675 mm 571911 69,10

④ Table top support, rotatable and removable, gray plastic. 571910 63,90

⑤ Wall mounting clamp, for Ø 60 mm column, plastic, black. Scope of delivery: 1 piece.  
Note: We recommend 2 pieces for mounting.  
571915 24,95

**zwaardvis**

Height 69,5 cm

**NEW 2023**



## Folding table feet - joint top

**26,20**

### Folding table base top foldable

Push button locking  
Aluminum matte silver anodized.  
Height 72 cm

57070 26,20



### Folding table base top + height adjustable:

Push button lock.  
Aluminum matte silver anodized. Height 55.5 - 76.5 cm

57076 34,95

**31,50**

### Folding table base top hinged

Aluminum matte silver anodized. Height 72 cm

57072 31,50

### Folding table base top hinged + height adjustable:

Anodized aluminum matte silver. Height 59 - 78 cm

57078 41,-

Folding position:  
Height 5 cm



### Folding table base - foldable at the top

Metal, height 67.5 cm

Anthracite metallic 57020 34,70

Light gray (RAL 7035) 57014 35,90

Brown 570140 35,90

### Folding table base top foldable

Aluminum silver anodized.  
Height 67.5 cm

57027 30,60

### Height adjustment screw, for table base

57027 4,80

57029 4,80

### Folding table base top foldable

Used in a wide range of manufacturers. Matte silver.

Weight: 650 g

Height 67.5 cm

Matte silver 57005 30,10

Black 57012 31,50

### Floor mounting for folding foot

Black, no fig.

57007 2,60

## Folding table feet - joint centered

Bed position:  
Height 31.5 cm

### Folding table base center folding

Metal, height 67.5 cm.  
Joint centered at 31.5 cm.  
anthracite metallic

57017 34,70



### Folding table base center folding

Push button lock. Aluminum matte silver anodized  
Height 74 cm, Joint centered at ca. 31 cm.

57074 28,50

### Folding table base center folding

Aluminum silver anodized.  
Height 67.5 cm

Joint centered at 31.5 cm

57028 35,50

### Height adjustment screw for table base

57028 4,80

57029 4,80

### Folding table base center folding

Weight: 650 g, height 67.5 cm

Matte silver 57006 30,60

Black 57018 29,90

### Floor mounting for folding foot

for 57005, black

57007 2,60

## Single table leg

To be released from the holder by pressing a button.

Height ca. 70 cm

Light gray 57000 8,95

### Table foot support

As a spare part or second shot.

Black 57001 4,50

**8,95**

## Table column

- For freestanding tables with removable table column
- Easy to store, tilt and wobble resistant
- Table top can be included in the lying surface
- Column height about 70 cm height, Ø about 6 cm

① Chrome 57031 19,90

② to screw on 57036 6,70

③ to To let in 57038 6,70

### Fixing rosettes

②



③



### ① Table column

made of anodized aluminum.  
Length 70 cm, can be shortened, Ø 5.5 cm. Guarantees high stability and quick assembly and disassembly.  
Scope of delivery: 1 table leg, 2 installation joints, 12 screws.

Weight 1.2 kg

57165 64,90

### ② Reinforced tripod

with increased stability. Allows the table to be placed and used outside the vehicle. Made of UV-resistant plastic.

Weight 1.0 kg.

57164 80,-



**NEW 2023**



# SWIVEL TABLE FRAMES

## Swivel table frames



### Swivel table standard

Inexpensive frame.  
Height ca. 72 cm.  
Swivel range ca. 40 cm.  
57111 57,20

57,20

### Swivel table comfort

With flat mounting plate  
(adds only 10 mm)  
To accommodate the table  
top in the smallest space.  
Height ca. 72 cm.  
Swivel range ca. 40 cm  
57129 77,50

**NEW**  
2023

### Aluminum swivel table frame

Clamp lock with lever  
Column swiveling, height  
adjustable and removable.  
Supports rotatable and remo-  
vable. Height 74 cm.  
57039 166,10

## Spare parts for swivel table frames

① **Spare clamp** for swivel tables  
Nut welded in the center  
57152 17,90

② **Bottom bearing** for swivel tables  
57133 7,95

③ **Fastening set** for U-swivel -  
table to Variotech bench VW T4  
(57130) 57150 29,90

④ **Star handle** M8,  
gray 53127 10,60

**Spare plate** for table top -  
mounting (for 57120 u. 57130)  
o. Fig. 57132 18,30

### U-tilt table

For mounting on  
smooth side surfaces,  
e.g. under overhanging  
seats. Stable due to  
additional support,  
with flat mounting plate.  
Height ca. 72 cm.  
swivel range ca. 40 cm.  
57126 115,-

### U-swivel table comfort

as 57126, but with  
additional swivel range  
of 30 cm due to cur-  
ved table column.

57120 101,-

### U-swivel table Exclusiv

Table frame for Reimo  
Variotech bench  
system Classic,  
e.g. VW T4 Miami,  
Lucky etc.  
Height 70 cm,  
depth 33 cm,  
mounting plate ø 19 cm  
57130 114,-

**PROFI TIP**

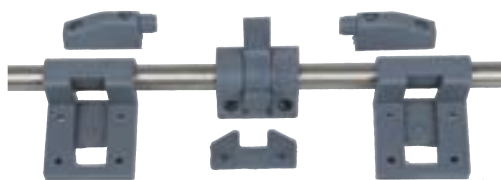


57126



57130

## Table slides for wall mounting



### Table slide rail with stainless steel support tube

Quick sliding and unhooking of the table top allows good access to benches and storage boxes, as well as quick bed construction. Lockable and fixable sliding safety device. Can be shortened as required. Length 100 cm

57055

30,90



### Table slide rail STILO

Oval aluminum tube, silver anodized. Black fastening elements. Table can be moved by lifting and locked in the toothed grid. Length 950mm,

57034

48,90

### Table suspension fitting

Easy mounting option for small to medium table tops. Quick mounting and dismounting of the plate.

Brown, 2 pieces

57051

6,40



Wall rail 100 cm  
with table mounts

Additional rails  
10 cm each

### Table slide rail stable

Table top can be moved by lifting. Locking positions can be determined by self-made holes. Rail with end pieces and 2 suspension pieces. Anodized aluminum with silver-gray piping.

Length 100 cm

57030

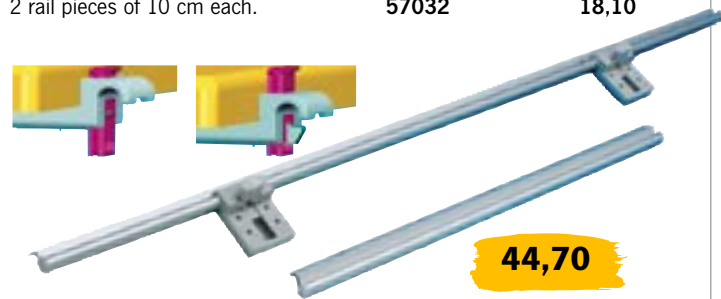
47,40

### Additional slide rails for bed position

2 rail pieces of 10 cm each.

57032

18,10



### Table slide QUICK Clip

2 wall rails for hanging the table top and 2 Quick-Clip table top fasteners. At the touch of a button, the top can be moved or unhooked. The 2 rails can be taken for example for table and bed position.

Dimensions rails: 95 cm and 50 cm.

57056

44,70

### ① Hand screwdriver with flexible shaft - The only one with which you also come around the bend!

- For hard to reach places
- With retaining ring for precise guidance of the hand screwdriver
- The ergonomic handle shape enables high power transmission
- With flexible shaft
- With magnet

Screwdriver bit socket: 6.35 mm (1/4") hexagon socket  
Handle: 2-component handle Length (depth) product: 289 mm

52708

14,80



### Ergo spring clamps FZH - Classic spring clamps in a new ergonomic shape

Offer a wide range of new applications: Ideal for applications in the field of decoration, leisure, etc. Ideal for stretching in tight spaces

② Span 30 mm

52704

3,70

③ Span 40 mm

527040

5,20

④ Span 50 mm with 360° rotating hook. Particularly suitable for fastening lights and cables with a Ø of up to 25 mm. With V-groove for perfect surface adaptation for secure clamping of round material Loadable up to 5kg.

527041



### ⑤ megaCut S -

#### All-round cutter for strong materials

- Razor sharp blade for cutting for almost all materials
- Ergonomic handle with non-slip elastic support for safe and controlled handling

With integrated lock and touch protection on the front of the blade holder for maximum safety. Blade length: 61 mm, blade thickness: 0.65 mm, blade material: double-edged, razor-sharp trapezoidal blade made of stainless steel

52709 14,80

## Mobile sack trucks - foldable and stable

- Compact and lightweight, practical automatic folding mechanism opens wheels and bucket synchronously
- Max. 70 kg load capacity, 2-point fixation
- Rounded cross bar, ideal for transporting round objects

Dimensions: W 445 x D 430 x H 1,050 mm  
Packing size: 430 x 730 x 60 mm. Plastic wheels, weight: 3.9 kg. Load capacity 70 kg

52717

107,50



- Retractable handlebar with central locking button and quick-fold system for space-saving storage
- Large tread wheels, suitable for stairs and outdoor use
- Max. 100 kg load capacity, 3-point fixation and stable cross bar for easy tilting

Dimensions: W 470 x D 540 x H 1.100 mm

Packing size: 500 x 820 x 77 mm

Plastic wheels, weight: 5.6 kg. Load capacity 100 kg

52716

132,70





# FOR A LONG CAR LIFE - AUTOMOTIVE UPHOLSTERY FABRICS



## Original automotive upholstery fabrics

Original automotive upholstery fabrics meet the highest automotive-specific requirements defined by vehicle manufacturers for passenger cars and commercial vehicles.

Extremely high abrasion resistance, high lightfastness and flame retardancy. Easy to clean. These properties make these materials particularly suitable for continuous use and high stresses, such as those encountered in a motor home used for everyday purposes.

## Series upholstery fabrics for Volkswagen - for a long car life



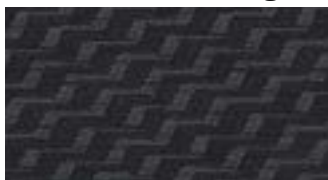
**Place** series fabric VW T5,  
1 mm foam laminated.

W 170 cm, 100% polyester  
6 meters **5402550** **285,-**

GP\* 27,94/ 1 qm

10 meters **5402551** **459,-**

GP\* 27,00/ 1 qm



**Tasamo** series fabric VW T5,  
4.5 mm foam laminated.

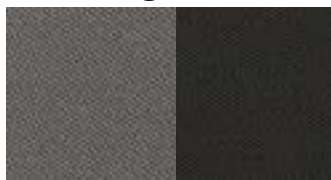
W 180 cm, 100% polyester

6 meters **5402560** **425,-**

GP\* 39,35/ 1 qm

10 meters **5402561** **679,-**

GP\* 37,72/ 1 qm



**Classic** VW T5, 3 mm, foam laminated,  
W 180 cm, 100% polyester.

**Dark gray**

6 meters **5402570** **189,-**

GP\* 17,50/ 1 qm

10 meters **5402571** **254,-**

GP\* 14,11/ 1 qm

**Gray**

6 meters **5404620** **172,-**

GP\* 15,93/ 1 qm

10 meters **5404621** **269,-**

GP\* 14,94/ 1 qm



**Quadratic** Series fabric VW T5,  
3 mm foam laminated,

W 160 cm, 100% polyester

6 meters **5402500** **207,-**

GP\* 21,56/ 1 qm

10 meters **5402501** **313,-**

GP\* 19,56/ 1 qm



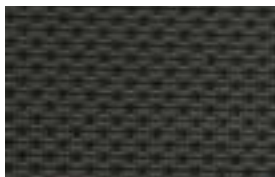
**Austin** series fabric VW T5/  
T6 3 mm foam laminated,  
W 180 cm, 100% polyester

6 meters **5402540** **210,-**

GP\* 19,44/ 1 qm

10 meters **5402541** **317,-**

GP\* 17,61/ 1 qm



**Simora** series fabric VW T6,  
4.5 mm foam laminated,  
W 170 cm, 100% polyester

6 meters **5402580** **269,-**

GP\* 26,37/ 1 qm

10 meters **5402581** **433,-**

GP\* 25,47/ 1 qm



**Titanium Black** Series VW  
T6, 1 mm foam laminated,  
W 170 cm, 100% polyester

6 meters **540230** **164,-**

GP\* 16,08/ 1 qm

10 meters **540231** **274,-**

GP\* 16,12/ 1 qm

50 m roll **540232** **1499,50**

GP\* 17,64/ 1 qm



**Bricks** Series fabric VW T6.1,  
4 mm foam laminated.

W 175 cm, 100% polyester

6 meters **5402530** **179,-**

GP\* 17,05/ 1 qm

10 meters **5402531** **255,-**

GP\* 14,57/ 1 qm



**Double Grid** Series VW T6.1,  
3 mm foam laminated.

W 180 cm, 100% polyester

6 meters **5402590** **149,-**

GP\* 13,80/ 1 qm

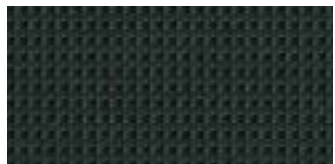
10 meters **5402591** **232,-**

GP\* 12,89/ 1 qm

50 m roll **5402592** **1795,-**

GP\* 19,94/ 1 qm

## Upholstery fabrics for Renault Trafic



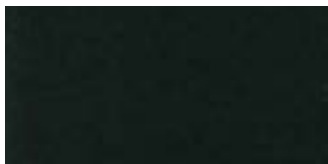
**Compo** Renault series,  
W 180 cm, 2 mm foam laminated

6 meters **540020** **247,-**

GP\* 22,87/ 1 qm

10 meters **540021** **395,-**

GP\* 21,94/ 1 qm



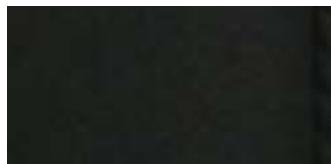
**Java Natte, black** series Renault,  
W 190 cm, 2 mm foam laminated,

6 meters **540030** **186,-**

GP\* 16,82/ 1 qm

10 meters **540031** **293,-**

GP\* 15,42/ 1 qm



**Black Uni** Renault series,  
W 180 cm, 2 mm foam laminated,

6 meters **540210** **266,-**

GP\* 24,63/ 1 qm

10 meters **540212** **427,-**

GP\* 23,72/ 1 qm



**Black Patterned** Series Renault,  
W 180 cm, 1 mm foam laminated,

6 meters **540200** **321,-**

GP\* 29,72/ 1 qm

10 meters **540203** **519,-**

GP\* 28,83/ 1 qm

## Upholstery fabrics for Mercedes Vito



**Caluma** Original fabric for MB Vito,  
W 165 cm, flat weave polyester,  
polyurethane, nylon.

6 meters **540880** **299,-**

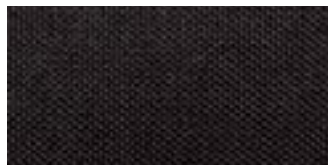
GP\* 30,20/ 1 qm

10 meters **540881** **484,-**

GP\* 29,33/ 1 qm

50 m roll **540882** **3145,-**

GP\* 38,12/ 1 qm



**Uni black** original fabric for MB Vito,  
W 165 cm, flat weave in brushstroke  
look. 50% polyester, 50% polyacrylic.

6 meters **540040** **325,-**

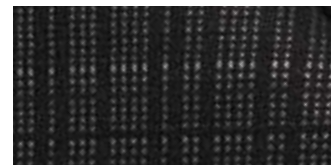
GP\* 32,83/ 1 qm

10 meters **540041** **419,-**

GP\* 25,39/ 1 qm

50 m roll **540042** **1745,-**

GP\* 21,15/ 1 qm



**Tunja** Original fabric for MB Vito, W  
182 cm, 100% polyester flat weave  
fabric

6 meters **540160** **283,-**

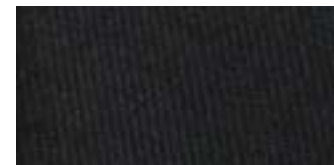
GP\* 25,92/ 1 qm

10 meters **540161** **455,-**

GP\* 25,00/ 1 qm

50 m roll **540162** **2495,-**

GP\* 27,42/ 1 qm



**Black** original fabric for MB Vito, B  
160 cm, 100% polyester flat weave

6 meters **540170** **259,-**

GP\* 26,98/ 1 qm

10 meters **540171** **415,-**

GP\* 25,94/ 1 qm

50 m roll **540172** **2295,-**

GP\* 28,69/ 1 qm



## \*Martindale method

The most commonly used method to determine the abrasion resistance of textile fabrics, especially upholstery fabrics.

	soft padding	hard padding
Private use	>10,000 Martindale	15.000 Martindale
Office use	25.000 Martindale	35.000 Martindale
Public	>30,000 Martindale	40.000 Martindale
local passenger transport		

You can find more upholstery fabrics/leather upholstery in various packaging units at: [www.reimo.com](http://www.reimo.com)

## Upholstery fabrics for Ford Transit Custom



**Capitol Ebony**, Width 190 cm,  
3 mm foam laminated  
6 meters **5401020** 227,-  
GP\* 19,91/ 1 qm  
10 meters **5401021** 299,-  
GP\* 15,74/ 1 qm



**City Ebony**, Width 180 cm,  
3 mm foam laminated  
6 meters **5401000** 139,-  
GP\* 12,87/ 1 qm  
10 meters **5401001** 213,-  
GP\* 11,83/ 1 qm

## Upholstery fabrics on the REIMO Van-Concept

### New Wave - width 140 cm

Soft, noble cover fabric with suede look. Durable and easy to clean.

**Material:** 100% polyester, flame retardant, washable at 40°C. Weight: 730 g/lfm. **Abrasion value: 40.000 Martindale\***



**New Wave** Light gray,  
6 meters **540370** 196,-  
GP\* 23,33/ 1 qm  
10 meters **540371** 262,-  
GP\* 18,71/ 1 qm



**New Wave** Beige,  
6 meters **540360** 196,-  
GP\* 23,33/ 1 qm  
10 meters **540361** 262,-  
GP\* 0,00 / 1 qm

## Automotive leather



Noble and at the same time robust cover fabric in genuine leather. Durable and easy to clean. Flame retardant, lightfast level 6. thickness 1.2 mm

**Material:** Genuine leather,  
**Abrasion value: 60.000 Martindale\***



**Leather Beige**  
9 m<sup>2</sup> **5408310** 699,-  
GP\* 77,67/ 1 qm



**Leather Gray**  
9 m<sup>2</sup> **5408320** 699,-  
GP\* 77,67/ 1 qm



**Leather Black**  
9 m<sup>2</sup> **540830** 549,-  
GP\* 61,00/ 1 qm

## Imitation leather in 3 quality levels

- Flame retardant
- Water repellent
- Useful width at least 140 cm

- Material surface 100% PU, bottom 75% PES and 25% cotton

### Madryt:

Weight 400 g/m<sup>2</sup> (+/- 10%),  
thickness 0.9 mm (+/- 3%)  
Abrasion resistance: 102,400 Martindale



**Black**  
6 meters **510260** 119,-  
GP\* 14,17/ 1 qm  
10 meters **510261** 184,-  
GP\* 13,14/ 1 qm



**Slate**  
6 meters **510270** 122,-  
GP\* 14,52/ 1 qm  
10 meters **510271** 188,-  
GP\* 13,43/ 1 qm

### New Outlander:

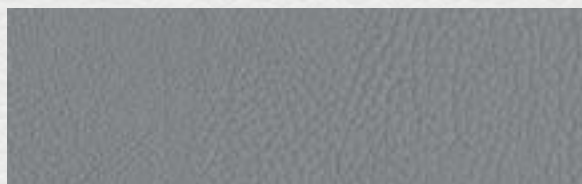
Weight 420 g/m<sup>2</sup> (+/- 10%),  
thickness 0.9 mm (+/- 3%)  
Abrasion resistance: 102,400 Martindale



**Brown**  
6 meters **510290** 154,-  
GP\* 18,33/ 1 qm  
10 meters **510291** 239,-  
GP\* 17,07/ 1 qm

### Santiago:

Weight 450 g/m<sup>2</sup> (+/- 10%),  
thickness 0.95 mm (+/- 3%)  
Abrasion resistance: 51,200 Martindale



**Light gray**  
6 meters **510410**  
GP\* 17,74/ 1 qm  
10 meters **510411**  
GP\* 16,64/ 1 qm



**Cognac**  
6 meters **510430** 149,-  
GP\* 17,74/ 1 qm  
10 meters **510431** 233,-  
GP\* 16,64/ 1 qm



## HIGH-QUALITY FOAMS - MANY YEARS IN SERIES USE



### Foam boards

As raw material for self-cutting (e.g. with electric meat knife) for upholstery group. Volume weight 35<sup>kg/m³</sup>.

200 x 150 x 3 cm	GP* 1.221,11 / 1 cbm	<b>55006</b>	<b>109,90</b>
200 x 150 x 4 cm	GP* 1.133,33 / 1 cbm	<b>55007</b>	<b>136,-</b>
200 x 150 x 6 cm	GP* 1.322,22 / 1 cbm	<b>55008</b>	<b>238,-</b>
200 x 170 x 7 cm	GP* 1.129,17 / 1 cbm	<b>55016</b>	<b>271,-</b>
200 x 150 x 8 cm	GP* 1.004,17 / 1 cbm	<b>55002</b>	<b>241,-</b>
200 x 170 x 8 cm	GP* 1.188,89 / 1 cbm	<b>55003</b>	<b>321,-</b>
200 x 150 x 10 cm	GP* 1.173,33 / 1 cbm	<b>55004</b>	<b>352,-</b>
200 x 170 x 10 cm	GP* 1.155,88 / 1 cbm	<b>55005</b>	<b>393,-</b>

### Foam special

Ideal for SD bed VW T4.

108 x 187 x 4 cm	GP* 1.575,00 / 1 cbm	<b>21129</b>	<b>126,-</b>
------------------	----------------------	--------------	--------------

### Foam 2-hard

With different degrees of hardness for the lower (hard) and upper range (soft)

200 x 150 x 10 cm	GP* 1.310,00 / 1 cbm	<b>55022</b>	<b>393,-</b>
-------------------	----------------------	--------------	--------------

### Upholstery wadding

Thickness ca. 25 mm, ca. 235 g/m<sup>2</sup> laminated on fabric. Professionals glue a layer of upholstery wadding on top of the foam with spray adhesive up to around the edges. **100% polyester**

150 cm wide., 5 meters	GP* 11,36 / 1 qm	<b>550200</b>	<b>65,30</b>
------------------------	------------------	---------------	--------------



### Feed strip

For high-quality topstitching; is sewn with quilting seam on the inside, pulled through the slit foam and tensioned. The cover tightens in this area, which gives a clear visual contrast of the quilting seam.

**Piece, 360 mm long**

GP\* 8,19 / 1 qm

**54910**

**2,95**



### Thigh pad 124 x 18 cm

To stick on the front edge of the seat. You will sit more comfortably and achieve a professional look, especially if you use indentation strips.

GP\* 67,73 / 1 qm

**59130**

**14,90**



### ① Power Spray Adhesive Plus

Heat resistant up to 110°C. Adheres to wood, metal and Plastics as well as for X-trem usable.

400 ml GP\* 42,37 / 1 Liter **500130** **16,95**

Danger: H222, H229, H315, H336, H411

### ② Spray adhesive

As above, but heat resistant up to 70°C

500 ml GP\* 27,00 / 1 Liter **50011** **13,50**

Danger: H222, H229, H315, H336, H411

GP\* = Base price per specified unit



## Velcro and adhesive tapes

Ideal for attaching cushions to folding benches or U-shaped seating groups.

### Velcro tape - adhesive + fleece

Width 20 mm, length 5 m

White	GP* 2,19 / 1 m	563003	10,95
White self adhesive	GP* 3,39 / 1 m	56305	16,95
Black, self-adhesive	GP* 3,39 / 1 m	56317	16,95
Black, self-adhesive and heat resistant up to 120°C	GP* 4,39 / 1 m	56319	21,95

### Special Velcro

Front Adhesive tape, Back side Fleece tape.

B 20 mm, L 5 m, Black	GP* 1,28 / 1 m	56310	6,40
-----------------------	----------------	-------	------

### Adhesive tape - Velcro side. For mosquito nets

Black and self-adhesive

B 20 mm, L 5 m	GP* 2,39 / 1 m	56324	11,95
B 50 mm, L 5 m	GP* 2,48 / 1 m	563290	12,40

### Fleece tape - self-adhesive

B 10 mm, L 5 m, Grey	GP* 2,79 / 1 m	56334	13,95
W 50 mm, L 5 m, Black	GP* 6,46 / 1 m	563300	32,30

### Velcro and adhesive discs. For fixing pads, Black

Adhesive disc Ø 35 mm, 10 piece	GP* 0,88 / 1 St.	56326	8,80
Adhesive disc Ø 35 mm, 50 pieces	GP* 0,60 / 1 St	563253	29,90
Fluffy disc Ø 35 mm, 10 pieces	GP* 0,88 / 1 St.	563252	8,80
Fluffy disc Ø 35 mm, 50 pieces	GP* 0,60 / 1 St.	563254	29,90



**Velcro tapes** Consisting of rough adhesive tape and soft fleece tape. For joining different materials. On sheet metal in vehicles, Reimo recommends heat-resistant Velcro tape. Adhesive tapes individually are good for holding slightly rougher cover fabrics on seat boxes. Normally, Velcro tapes are stapled to the substrate. For sheet metal and hard surfaces, use self-adhesive hook-and-loop tape. Curtains, for example, can be held gathered with the special Velcro.

### Endless zippers yard goods

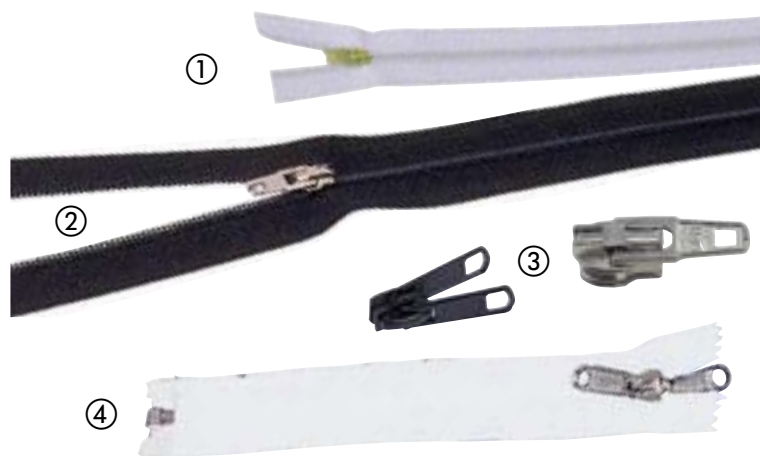
① 5 meter light gray, 3 mm	GP* 3,44 / 1 m	550500	17,20
5 meter black, 3 mm	GP* 3,70 / 1 m	550531	18,50
② 5 meter black, 5 mm	GP* 1,99 / 1 m	550560	9,95
5 meter rust brown, 5 mm	GP* 1,14 / 1 m	550630	5,70

### Zipper for zippers yard goods

③ Chrome-plated 3 mm, for 550500 and 550531			
5 piece		550551	1,20
10 piece		550552	2,60
Double zipper black 5 mm, for 550561			
5 piece		550572	9,70
10 piece		550573	18,70

### Zippers fixed lengths, 100% polyester, rot-proof

L 90 cm, gray, divisible		55051	6,75
L 170 cm, gray, divisible		55052	9,50
④ L 175 cm, White, divisible, double zipper		55061	13,95
L 210 cm, white, divisible, double zipper		55062	15,60



## Thermal mat film Isoflex for self sewing

① Thermal mat foil Isoflex, 8-ply			
W 160 cm, gray. Outside aluminized, for better sun reflection,			
5 meters		373650	77,10
	GP* 9,64 / 1 sqm		
10 meters		373651	149,-
	GP* 9,31 / 1 qm		

② Edging tape 40/20			
10 meters gray		559200	7,90
	GP* 0,79 / 1 qm		
50 Meter Grey		559201	29,90
	GP* 0,60 / 1 qm		
10 meters black		5592070	7,90
	GP* 0,79 / 1 qm		
50 meters black		5592071	29,90
	GP* 0,60 / 1 qm		

③ Eyelets with discs for inserting the suction cups in fabric			
14 mm		90211	21,95
11 mm		90210	17,95

④ Pushbuttons to screw on			
10 pcs.		56230	18,95

⑤ Suction cup 40 mm			
10 piece		37277	8,-

GP\* = Base price per specified unit



## Do it yourself kit

- 7-layer Isoflex material
- Insulation against heat and cold, reflection of the sun's rays
- The ideal privacy screen
- Easy customization and assembly
- Mounting with suction cups

**Make thermal mat yourself.** Make a template with the enclosed foil, put it on the material and cut out. Baste the edges of the thermal mat and trim with edging tape. Insert the suction cups and you're done. (For optimal insertion of the suction cups, purchase an additional 14 mm eyelet set Art. No. 90211)

**Scope of delivery:** 3.5 m Isoflex material, 1.55 m wide, 30 suction cups 30 m edging tape incl. 1 plastic film for making a template.

37285 73,95

## CURTAINS AND ACCESSORIES



### Curtain fabric JU - soft flowing

Opaque and durable super quality. Gray patterned.

Material: **100% polyester**, flame retardant. (DIN B1/M1) Fabric width **1,40 m**.

10 meters	GP* 17,43/ 1 qm	<b>540340</b>	<b>244,-</b>
20 meters	GP* 16,29/ 1 qm	<b>540341</b>	<b>456,-</b>



### Stretch fabric

e.g. for back wall covering of benches. **100% cotton**, flame retardant.

Fabric width **160 cm**.

10 meters gray	GP* 9,00/1 qm	<b>540820</b>	<b>144,-</b>
20 meters gray	GP* 8,41/1 qm	<b>540821</b>	<b>269,-</b>
10 meters black	GP* 9,00/1 qm	<b>540810</b>	<b>144,-</b>
20 meters black	GP* 8,72/1 qm	<b>540811</b>	<b>279,-</b>



### Curtain rails C profile

Without sharp edges. Manufactured according to the new safety regulations for cabs.

**Curtain rail plastic**, L 220 cm, Grey **56130** **14,95**

GP\* 6,80 / 1 m

**Curtain rail aluminum natural**, L 260 cm **56105** **24,15**

GP\* 9,29 / 1 m

### Articulated glider

100 piece **561100** **19,95**

GP\* 0,20 / 1 Stk.

### Locking device

6 piece **561111** **4,95**

GP\* 0,83 / 1 Stk.

1 piece **56111** **0,60**



Single track -  
Small  
Radii possible

### Curtain rails T-profile

250 cm, single track, plastic white **56122** **6,90**

GP\* 2,76 / 1 m

500 cm, single track, white plastic **561220** **12,90**

GP\* 2,58 / 1 m

### Glider

20 piece **56124** **3,50**

GP\* 0,16 / 1 Stk.

**56124L** **0,50**

### Locking device

6 piece **56125** **4,50**

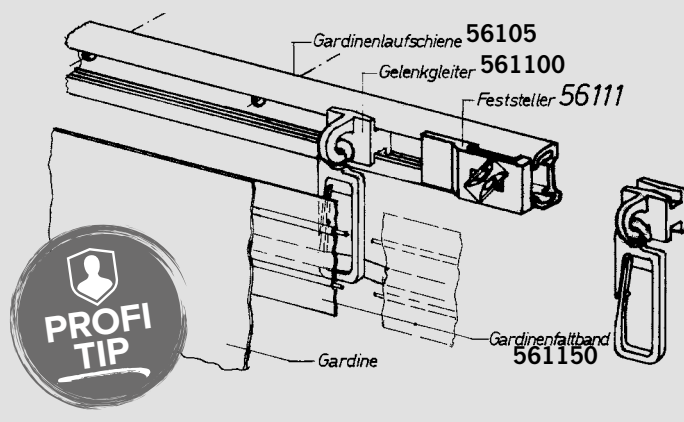
GP\* 2,80 / 1 Stk.

**56125L** **0,60**



### Curtain width

Professionals add **20%** to the window width when determining the curtain width. The height depends on the mounting point above the window. With snaps or Velcro easily connect divided curtains.



### Curtain pleat tape

22 mm wide. 100% polyester. Transparent

10 meters **561150** **5,90**

GP\* 0,59 / 1 m

50 meters **561151** **26,-**

GP\* 0,52 / 1 m

200 meters roll **561152** **88,-**

GP\* 0,44 / 1 m

### Curtain latch

holds the retracted curtain. Made of sturdy plastic. Light gray  
2 pieces **561201** **4,05**

### Glider for curtain rails

For box rails

① 20 piece **56127** **3,90**

GP\* 0,20 / 1 Stk..

**56127L** **0,60**

### Locking device for curtain rails

For box rails

② 6 piece **56128** **4,90**

GP\* 0,82 / 1 Stk.

**56128L** **0,90**

GP\* = Base price per specified unit

Blue numbers = retailer info for loose goods in packaging units

## Mosquito net: extra dense and stable

Non-rotting plastic fabric. Can be attached anywhere with Velcro or snaps. Reliable protection against mosquitoes and vermin.

Tight even small mosquitoes stay outside.

It is best to use Velcro fasteners for tight connection.

Black finish flame retardant.

- ① **Mosquito net, White**, 1.65 m wide.  
5 meters **56018** GP\* 6,99 / 1 m  
20 meters **560200** GP\* 3,76 / 1 m
- ② **Mosquito net, Black**, 1.45 m wide.  
5 meters **56019** **71,95** GP\* 9,92 / 1 m  
20 meters **560242** **273,-** GP\* 9,41 / 1 m



Reimo uses this quality for the lifting and sleeping roof mosquito nets.

## Curtain fastening with spiral tape (Spannfix)

### Complete set for curtain fixing

For station wagon vehicles. Complete set to fix your curtains in the motorhome, caravan, etc.. Sufficient for 5 windows in the van.

Included accessories: 10 pieces mounting set for tension fix, 10 pieces curtain raisers, 10 pieces push buttons and the tension fix.

**12 m tension fix** Light gray + accessories **56250** **62,80**

**15 m tension fix** Light gray + accessories **56251** **64,70**

### Tension fix set for curtain fixing

**10 m tension fix**, 20 eyelets **56253** **22,80**

### Curtain fastener set

Delivery without fabric



from **22,80**

## Spannfix yard goods

Spiral tape light gray, 10 meters **562200** GP\* 2,60 / 1 m **26,-**

Spiral tape light gray, 50 meters **562201** GP\* 2,28 / 1 m **114,-**

## Spannfix fasteners



### Mounting without wall distance

Hook or eye screws for screwing into the Spannfix ends. The eyelet hole allows the Spannfix to be attached directly to the wall.

Eyelets, 10 pieces **56225** **3,60**

**56225L**

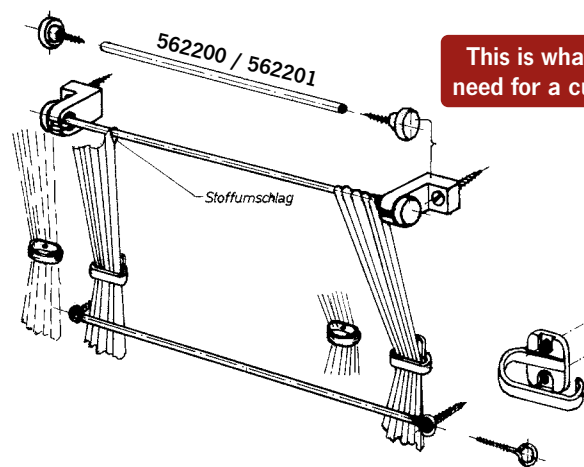
Hooks, 10 pieces **56226** **3,60**

**56226L**

### Mounting with wall distance

Elegant wall mount for the tension fix tape. Keeps the curtain at a distance from the wall. Plastic angle and special screws to screw into the Spannfix ends.

Light gray, 4 pieces **562101** **3,60**



This is what you need for a curtain:

## LOXX safety push buttons by Hindermann

The clever security pushbutton with triggering self-locking device for almost all applications and extreme loads.

set of 2 **373831** **24,50**

set of 5 **373830** **38,95**



## LOXX push buttons

for fastening fabric, tent fabric, insulating mats, mosquito nets, etc., incl. tool, 5 pieces

Silver, Nickel-plated **37383** **20,95**

Black **37384** **33,95**

## Push buttons

for fixing curtains and mosquito nets in the vehicle. Tool included.

10 pieces **56230** **18,95**